



BLUSTERETTE

The Newsletter of the Watermead Village Residents Association
Summer Edition August 1993



A LETTER FROM THE CHAIRMAN.....

Dear Residents of Watermead

Some of you may not know of the Watermead Village Residents Association and other may only have heard about us by way of some odd goings on in the past. So before you throw this newsletter in the bin along with the junk mail you get through your door everyday, please spend a few moments just to find out what the Association may be able to do for you.

The Association was set up in the early days of the Watermead development to represent all of the residents of the village, not just one developer's section, but everyone who lives in the village. In the early days there were many high hopes and expectations of what living in this new, lakeside, development would mean. Sadly those expectations have withered in the cold wind of 90's recession.

We now have to look out for ourselves and that is where the Association comes in. Our objectives, as set out in the recently created constitution of the Association, are to represent the residents to outside bodies, to manage the communal facilities of the village and to help organise social events.

I hear you say 'what communal facilities?'

Well, unfortunately we have no control over the sporting facilities, these are all in Receivership, but we do manage the splendid Village Hall, now professionally cleaned and undergoing some much needed improvements. The hall is available for hire every day and evening of the week to anyone, with a special rate for residents.

So if you want to save your house from the effects of a children's party or are just having a few too many relatives around for drinks just give Julia Robertson (397769) a call to make a booking.

Everyone must have heard that the initial plan was that the communal sporting facilities of the village such as the lake, the ski slope, the sports club, the cricket pavilion, (yes, the nursery school is still supposed to be available as a cricket pavilion!) and the running track, would all run at a healthy profit and provide a focal point for the village.

The reality was that the plans were optimistic in good times and come the lean times of the last few years they have all gone to the wall in one way or another.

The Association is keenly aware that new life needs to be breathed back into the village, not only to make it a more pleasant place to live, but also as a means of maintaining the value of all our properties. We have all made a financial investment to some degree in the village and I am sure there is no one who wants to see that investment waste away through neglect.

As an Association we are approached by many organisations to sound out our opinion on various schemes to take over the defunct facilities. Our approach is always the same - is the gain for the village worth the inconvenience likely to be caused by the development. To date many uses for the lake, the shops and the ski lodge have been put forward, but at present none seem to be nearing a workable state.

... continued on next page.

The Association needs to know your feelings on this so please talk to the committee members if you have any concerns, come along to meetings if you are able and take an active part.

Whilst I am on this subject, on several occasions it has been suggested to me that the residents should join together to buy up the sports centre, complete the building work and open it as a commercial venture. So all you business types out there, why not get some of that entrepreneurial spirit going and see if this is a workable proposal. On a lesser scale there are still some shop units in the central area available on a 999 year lease at very reasonable prices.

What else is the Association doing? Well we are still active in the social areas, but to a much lesser extent than former years. Currently we are planning to organise a barn dance this autumn and carol singing in the Piazza at Christmas. Your active involvement would be greatly appreciated for these events and anything else you would like to help organise. The Association is here to assist, but not necessarily to take the lead. It is up to the residents to put forward good ideas.

Whilst we are talking of good ideas Sandra Gowling (20956) is organising a Neighbourhood Watch scheme. Please do contact her for details or if you can offer some time to help with the organisation.

Hopefully the Neighbourhood Watch will not be the only example of community action that we shall see.

Personally I feel that we are all responsible for the environment we live in. We can not expect others to do everything for us, especially when those others are companies in hard times. Much of the communal land is owned by various Royco companies, none of which is really a going concern, so we cannot expect much from them.

In former times we might have expected the local council to take over the maintenance of the open spaces, but councils now have very little money to spend and are reluctant to take on new responsibilities. So it falls to the residents to do what they can. Collectively, we can act through bodies such as our Association, to press Royco, Official Receivers and the council to live up to their commitments. Individually, we can all make sure that the little piece of the village around us does not fall into disrepair.

So, please pick up that litter from outside your property, join with your neighbours to keep that bit of grass and shrubbery tidy and soon the place will start to look like a living community rather than the broken dreams of yesteryear.

Edwin Crockford, Chairman

WATERMEAD & WEEDON WOMEN'S INSTITUTE

PROGRAMME FOR 1993.

Anyone interested is welcome to attend a meeting before joining the branch. Meetings are held in the Village Hall, on the first Thursday of the month and start at 7.30 p.m.

5/8/93	The National Trust. Mr. Dorrance
2/9/93	Understanding Photography. Mr D. Ripp
7/10/93	Aromatherapy. Jean Adams
4/11/93	ANNUAL MEETING
2/12/93	How to trace your family tree. Mr. Grainger

CHARGES FOR HIRE OF THE HALL

To ensure that we have the income to look after our hall properly, we have put our hire charges on a proper footing. Remember that we spend several hundred pounds a year on heating alone, and we are also having the Hall cleaned professionally. We will also have to decorate the Hall again when the problems of water seepage are eventually solved. Other improvements will be made as money becomes available. The new tariff is on the Notice Board in the tunnel leading to the Piazza, and details can also be obtained from Julia Robertson (397769), who looks after our Hall bookings.

NEIGHBOURHOOD WATCH SCHEME

As mentioned by the Chairman in his letter, it is proposed to form a Neighbourhood Watch Scheme covering the whole of Watermead Village. Over the next few weeks, every household will be visited to obtain their views as to whether they wish to be included in the Scheme. In the meantime, details can be obtained from Mike and Sandra GOWLING, 22 Lark Vale, Watermead. 0296 20956.

AFTERNOTE

Since Sandra and Mike wrote this note, a number of residents have been approached, and the indications are that a large proportion of them will join the scheme. The cost is minimal, possibly only £1, while the advantages may be incalculable. We will be looking out for residents to act as local co-ordinators, preferably people who work from home or are otherwise present during the day. You now know that someone may be calling upon you; if you have any doubts, contact Mike or Sandra!

"Promise, large promise is the soul of an advertisement."

...so wrote Samuel Johnson in the 18th Century. We would like you to make 'large promise' by advertising in Blusterette. Are you self-employed and perhaps, under-employed? Have you skills to offer to around 600 residents in Watermead? Wouldn't someone like to know that you sing, juggle, tap-dance, paint watercolours, advise on legal or financial matters????

*Six hundred homes now receive Blusterette.. another edition will be out in early autumn.
Shouldn't you be touting your wares, offering your services, even denying rumours?*

For residents, £40 buys a full page ad.; commercial rates are £120 for a full page. In both cases, smaller areas are pro rata. Contact Adam Dunn on 394369 for details of publishing dates. He's waiting for your call! Remember, it's AD for ADs!

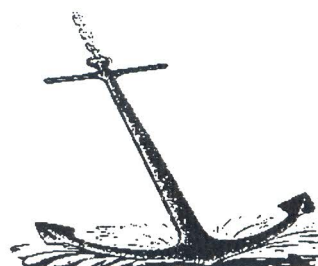
BABY-SITTING SERVICE

Responsible teenager, resident in Watermead Village, experienced with children, will baby-sit for you.

Rate £2.50 per hour.

Ring 26743.

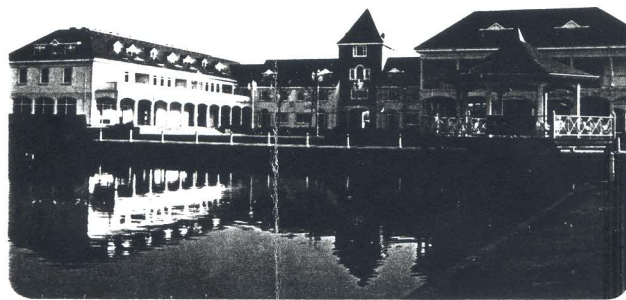
*Is your business ship-shape?
Or are you all at sea?
Do you 'anker after selling something?*



£5 would buy you this space in the Autumn Blusterette - so, up-anchor and set sail for the telephone - 394369 gets you the Purser!

WATERMEAD, AYLESBURY FOR SALE

Attractive lock-up shop units
491 sq ft up to 2,011 sq ft



Also suitable for office use subject to
planning permission

**Connell
Wilson**

0908-604630

206 SILBURY BOULEVARD, MILTON KEYNES MK9 1LU

Details on application (Ref PW)