

## Resident's Association Proposals

The WVRA Committee voted *nem con* on Monday 4th March to merge the Residents Association and Lakeside Land, further to approval in principle by the Lakeside Board given in February. This important decision can only be taken by the community as a whole and the necessary resolutions, which will require a 2/3 majority, will be debated at the WVRA AGM on Thursday 25th April, (8 pm at the Village Hall). The text of the resolutions is printed inside on page 3. The decision follows the adoption by the Board of Lakeside Land of its Mission Statement, which for the first time spells out the active role of the company in the community (see page 11)

**The meeting on the 25th April could have far-reaching implications and every resident is urged to attend.**

The scheme which is jointly proposed by the Residents Association and the company involves replacing the WVRA committee with a new community body to be known as Watermead Community Forum, membership of which will be chosen after consultation with all groups active in the community including the WI, the playgroups, and Neighbourhood Watch. The membership will have to be approved by the Lakeside AGM, in practice affording much greater democratic accountability than at present, because traditionally only a handful of residents ever turn up to WVRA AGMs (normally about 1 in 75 residents). Financial accountability will be strengthened - WVRA is presently struggling to administer its finances without a treasurer and financial controls have always been weak. The Lakeside Board has approved in principle moving to a full professional audit for the 95/96 financial year and will have to have an audit by law if the proposal to administer the central area goes ahead (see story page 3)

All existing functions of WVRA will be continued — the company will subsidise Village View and pay for the annual carol concert. The balance of WVRA's funds (about £1,000) will be ring-fenced and used solely to contribute to the costs incurred in refurbishing the village hall. The move ensures the long-term future of Village

View, which is presently in doubt. For the first time the View will have its own editorial board, which essentially will consist of those with expertise or enthusiasm who wish to get the paper out.

25th April is set to be a lively meeting - vociferous opposition is expected from a small number of residents. The tiny band of nightclub supporters on Watermead can be expected to oppose the plan, in the hope that the company might fail and its landholding made available for commercial development (receivers by law would be obliged to obtain the best price for Lakeside's assets).

## WVRA AGM

All residents are strongly advised to attend

Notice of AGM (page 3)

**Thursday, 25 April 1996, 8 PM**  
Village Hall



## Contents

- 2&3 Chairman's Brief
- 4 Forthcoming Events
- 4 WWW.Watermead
- 5 Women's Institute
- 5 Berton Parish
- 6 Watermead Cricket Club
- 7 Watermead Wildlife Review
- 7 Resident's Committee Members
- 9 Neighbourhood Watch
- 11 Lakeside Land



## Village View on the Internet

See page 4 for details of Village View's global experience...

Web address:-

**<http://www.powernet.co.uk/user-bin/run?icatch>**

email village view on...

[john@icatch.powernet.co.uk](mailto:john@icatch.powernet.co.uk)



# Environmental News...

There is a growing problem of abandoned vehicles on the piazza car-park. There appear to be three at the moment which have been abandoned by their owners. The caravan which has offended so many residents was, thankfully, moved some time on the 4th or 5th of March.

Other seemingly 'dumped' vehicles are:-  
Light-blue Opel  
Brown Triumph TR7  
Blue Reliant Scimitar  
Once the trend has been set for dumping cars, you know it will escalate. If you own these vehicles, please move them as you are offending other residents.

If you know the owners, either tell them or contact the WVRA Committee or the Lakeside Board.

## Don't let Watermead become a tip...



Watermead is generally a clean and tidy area so we must all try to keep it that way. It only takes a few more discarded bottles or pieces of rubbish to give others the impression that it won't matter if they drop litter too. On the positive side, there are five recycling bins provided on the car-park for bottles, cans and paper. If you take a few moments to use them then less of your waste will require disposal.

## Chairman's Brief



Michael squeezing into the hot seat of an RAF Tornado.

This issue I am afraid is mainly devoted to organisational matters. It really is vital that there is a good turnout at the Residents AGM on Thursday, April 25th. The decision to merge WVRA and Lakeside Land is the only sensible way forward — we cannot keep two organisations going.

The current publication arrangements for Village View will be put on to a proper footing and the company will pay for the annual carol concert (those being the two main activities undertaken by

the WVRA). Democratic accountability will be strengthened, because of the number of residents who are shareholders. About three times as many residents attended the Lakeside AGM in December as did the last WVRA AGM and in practice no more than a handful of residents have ever taken an active interest. The Association has struggled to fill the places on its committee from the very beginning and presently has not even got a treasurer.

There was a tiny minority of residents - best estimate around 5% - who wanted the nightclub. I'm well aware that some are anxious that the company should fail they well know that if the Board is forced to call in the receivers the company's

## Village Hall Rates

Mon to Fri Hourly — £7.00

Sat to Sun Hourly — £11.50

Sun to Thur Evenings — £35.00

Fri to Sat Evenings — £52.50

25% discount on bookings to all Watermead residents  
30% discount for 12 or more advance bookings

Contact :  
**Dorothy Toler**  
**01296 432405**

## Do you own a mobile Phone????

- Spare Batteries from £18.99
- In Car Charger leads from £15.99
- Leather Cases from £12.99
- Free delivery and 10% discount for all Watermead Residents.



FOR ALL YOUR CELLULAR PHONE NEEDS FROM A  
COMPANY BASED ON WATERMEAD CALL

**THE ACCESSORY DESK**  
**ON**

**01296 39 39 32**

**YOUR CELLULAR ACCESSORY SPECIALIST**



valuable assets (mainly the land) will by law have to go to the highest bidder, regardless of the effect that might have on the community. I am determined that will not happen. 1996 will be an important year for Lakeside Land. The company's first trading venture was a success in many ways and has raised Watermead's profile, both locally and nationally. Measured purely in commercial terms however it failed, although the company expects to recover its investment.

Obviously residents' failure to support the auction on December 12th was a blow. Had it gone well we would have taken advantage of the recent snow to prepare for our next planned venture, which was to have been a set of Watermead Christmas cards (which need to be on sale by September). You will

understand the caution of the Board in committing further funds for trading ventures. After December 12th the original plan to maintain the land by trading is dead in the water.

One new initiative is the proposal that Lakeside Land should maintain the central area, via a subsidiary company with both Lakeside businesses and the residents represented on the board. I hope that Lakeside residents will support that and the new arrangements could be in place by July 1st. The background to the company's involvement is that the management was offered to residents themselves in March 1995 but not taken up. The company's energetic new Commercial Director, Gary Poole, from Ayleswater, has proposed bringing all the businesses on Watermead together in a 'Watermead

Chamber of Commerce'. This is an initiative which I support very strongly and I hope it gets off the ground.

Speaking of local enterprise it is a delight to welcome Mr. Akram to Watermead. It is marvellous to have a shop and newsagent again and I encourage everyone to support it. There are environmental advantages as well - your catalytic converters won't work

between here and Tesco's! (they are next to useless on short journeys). If the new shop does not succeed it is most unlikely that another retailer would move in. I have promised Mr. Akram my full support in negotiations with Camelot (for our very own lottery terminal) and Scottish and Newcastle (to get the restriction on off-licence sales lifted).

**Please remember the AGM on April 25.  
Another low turnout could be disastrous.**

#### **AGM AGENDA:-**

- 1) Minutes
  - 2) Matters arising
  - 3) Presentation of accounts
  - 4) Report on preceding year's activity
  - 5) Winding up resolutions see (below)
  - 6) Constitutional amendments
  - 7) Elections (nominations by April 18)
  - 8) Appointment of auditors
  - 9) AOB
- (Items 6 - 8 dependent on 5).

## **WM Newsagents**

**Your very own local village store provides a wide range of goods with friendly, personal service.**

- Early morning newspaper delivery — First 4 weeks, **free-delivery** for new Watermead customers
- Wide range of convenient goods — dairy products, tobacco, chilled dried & tinned foods, sweets & chocolate (for those sudden urges!)
- 'Walls' ice-creams stocked ready for another long hot Summer.

**Coming soon...**

Frozen foods  
Videos to rent

Watermead Village Piazza  
01296 338435

### **Winding-up Resolutions**

#### **Amendment**

pursuant to clause 6(viii) of the Constitution

Having regard to the promotion by this Association of the company known as Lakeside Land Limited; and further having regard to the Memorandum and Articles of Association of the company and the Mission Statement (see page 11) adopted by the Board on 7th March 1996, and further having regard to the extent to which the said company now represents the community,

This Association resolves :

1. To wind itself up forthwith, and
2. In accordance with clause 6(viii) of the Constitution to transfer the balance of the remaining funds after payment of any creditor of the Association to the said Company against the undertaking of the Company to apply the said funds for the specific purpose of offsetting those funds against expenditure incurred by the Company in the refurbishment of the Watermead Village Hall, to the benefit of the community.
3. To transfer such assets as remain, including bunting, loudhailer, stewards jackets etc. to the said Company for the use of the Community.

#### **Alternative amendment**

(if previous resolution defeated)  
New Clause 9

Having regard to the success of the company promoted by the Association, Lakeside Land Limited ("the Company"), in opposing the proposed large nightclub development on Watermead to the benefit of the community; the Mission Statement and Objects of the Company; the extent to which the Company represents the community and the ongoing interest of the community in the success of the Company, the Association resolves to co-operate with the Company for the benefit of the community and further resolves that:

Nothing in this Constitution shall authorise the Association whether through the Committee or otherwise to do any act nor say or publish any thing which shall undermine or tend to undermine the Company. The Committee and Officers shall not have power to make any statement concerning the Company without the authority of the Board. In the event of any dispute between the Company and the Association the decision of the Board of the Company shall be final subject only to ratification by the shareholders in accordance with the Articles of Association of the Company.



# Forthcoming Events at Watermead



## Village View on the Internet

This edition of Village View may be being read by someone having breakfast in Tokyo, eating lunch in Prague, or in bed in LA(!). A version of this newsletter is available on the World Wide Web, viewable by anyone with a computer, a modem and web browser software. If you have any friends or relatives abroad or elsewhere in the UK, tell them about Village View on the internet and give them a taste of life on Watermead!

Hopefully, future issues will also be published on the internet. Any email received regarding this issue will be published so you can see what people think of your home-life. If you want to contribute to the next issue of what is, after all, your community newsletter, contact the editor or any member of the Residents Committee. The web address for the net version of Village View is...

<http://www.powernet.co.uk/user-bin/run?icatch>

---

### Little Perishers Playgroup

Tues, Weds, Thurs (Mon also from April 15)  
9.30am — 11.45am

Contact Karen on 26967

---

### Mothers & Toddlers

Weds 2.00pm — 4.00pm  
Fri 10.00am — 12 noon

Contact Sue on 435282

---

### Stillwaters Christian Church

2nd & 4th Tues of the month 7.30pm — 9.30pm  
Sunday 9.30am — 11.30am

Contact Ian on 661401

---

### Aylesbury Town Band

Weds 7.30pm — 9.30pm

Contact Paul on 81909

---

### Women's Institute (see page 5)

1st Thurs of the month 7.00pm — 9.00pm

Contact Suzanne on 87954

---



## Home Computing Seminar

Computers are now an essential tool in the home education of your child, a tool that you can no longer afford to ignore!

But buying a Personal Computer (PC) can be a like trying to cross a minefield and buying software can be equally difficult. An informed decision may save you a great deal of money and will help you get the best out of your computer.

Then there is the question of the Internet, you have probably heard all sorts of good and bad things about it. What is it? How does it work? How can it help you? How do you control it?

If you are interested in attending the seminar then please ring — for further details.

To answer these questions, we will be running a seminar in your area in the near future covering the usage of computers in the home. We will be covering the following topics :

- Introduction to the Personal Computer
- What type of Personal Computer to buy
- Educational Software and CD-Roms
- The Internet

You will be able to ask questions, see demonstrations and the cost of the seminar can be offset against the purchase of hardware and software.

**Cyberdyne Computer Services**  
01296 393339



## The Watermead & Weedon Women's Institute

### Ladies !

### *Springtime Challenge*

Why not join your local Watermead and Weedon Women's Institute. We meet 1st Thursday of each month at 7:30pm in the Village Hall.

Make new friends and widen your interests with our varied programme of talks and demonstrations. For more information call

**Suzanne Staines**

President, on:  
87954



Here,  
at Watermead...

### *The Traditional Saturday School*

established 1989

helps improve reading, spelling & handwriting.  
Low cost, high quality courses.  
Small groups. Ages 7 — 12 years.

Telephone: (01296) 432405

## Bierton Parish News

**Easter at St. James the Great Bierton**

Lent and Easter are being celebrated in traditional style again this year at St. James's Church. On Mothering Sunday (17th March) there was a special Family Service, during which Simnel cake and posies for mums were distributed. Palm Crosses will also be distributed at the 9 am Service on Palm Sunday (31st March).

### **Easter Services**

**Maunday Thursday** 8pm, Holy Communion and stripping of the church for Good Friday.

**Good Friday** 10am, The Litany. 2 to 3pm, The Last Hour — A meditation on the Crucifixion, with hymns.

**Easter Saturday** 8pm, Blessing of the Fire and lighting of the Paschal Candle.

**Easter Sunday** 9am, Holy Communion with Easter hymns celebrating the Resurrection. 3pm, Family Service and distribution of Easter Eggs to the children. 6pm, Evensong with Sermon

**Easter Monday** 8am to 8pm, Organ Marathon in aid of a local charity. Come and sing any hymn of your choice and make a small donation. Refreshments will be available all day. At 8pm, the day will finish with a short celebration of the Holy Communion.

The Holy Communion will be celebrated each day of Easter week. Please ring 23920 or 26743 for details.



## *Le Club Français*

### **PARENTS!**

**Take French leave of your children this Easter**

A French club for 6 to 11 year olds is coming to Watermead from 9th to 12th April. A fun time is guaranteed through games, songs, crafts and many other activities. Tuck shop available every day.

No knowledge of French required but expect your children to come away with some.

For further details on **Le Club Français** call

**KATE and DANIELLE: 01296 747622**





# Watermead Cricket Club News

by Jean-Paul Arama - WVCC Chairman

Now entering our fifth season, the Watermead Village Cricket Club (WVCC) are looking for new members who wish to play or support the Club. The Club play friendly fixtures usually on Sundays and competitive fixtures Midweek in the Aylesbury Midweek League. The WVCC also arrange regular social events for members, these provide an opportunity for members, and their partners, to socialise and meet local people. If you do not wish to play but wish to support the Club and attend social events, then please join as a social member. If you would like to join the WVCC please call me on **01296 24447**.

When the Club was first formed we played mainly friendly games and we even managed to win a few! We then had a season of very competitive fixtures most of which we lost, unfortunately, this discouraged some members who felt that the fixtures were getting too serious. The lack of facilities at Watermead has also caused some players to choose to play for other Clubs, some of whom are quite far away. This meant that the Club has had to rely on "outside talent" to enable us to field a full team. Unfortunately, this led to a situation last year where Watermead players were the minority and sometimes did not even get to bat.

I think that this is a great shame as there is clearly a great deal of cricketing talent in Watermead and all it takes is a little team spirit for us to make this very enjoyable and good fun. As some of you may be aware our Captain - Bob Coleman - is leaving the RAF and may be relocating, he therefore feels unable to make the commitment to Captain the team this year. We now need a new Captain who will be prepared to lead the side and help develop the team within the original principles on which

the Club was set up. If you are interested in the Captaincy then please call me on 01296 24447.

For those who wish to play competitive cricket, we are now in the first division of the Aylesbury Midweek League and we hope to continue to do well this year. We are also running winter nets practice sessions at Lords and have a limited number of places available. These sessions are held on Wednesdays at 9pm and cost around £5, please contact Philip Doyle on 01296 393338 for further details.

You may have heard that Aylesbury Vale District Council decided that it did not feel it had a strong enough legal position to pursue NurseryTyme for failing to grant the WVCC access to the Pavilion at Watermead, and has only been forced to apologise by the Local Government Ombudsman. Any further pressure could only come from an internal review by the Ombudsman. Whilst this sounds negative, it may actually help the Cricket Club in that it may enable us to plan to build our own pavilion on land purchased at the rear of the ground two years ago. Previously, the AVDC would not entertain the idea of a second pavilion as they felt we already had a facility. We have spent several years in protracted negotiation with NurseryTyme and Jack Peeters (AVDC Chief Planning Officer) and the AVDC have accepted that the joint-use scheme is potentially unworkable due to problems of cost, liability and insurance. During this time we have been dependant on the support of Michael Jackson of the 'Ski and Sail' who has provided us with the use of his facilities.

We will shortly be aiming to launch a campaign to raise funds to support an application to the National Lottery Sports Fund for a development grant. We propose building a slightly smaller structure in a similar style to the existing pavilion, we also propose a new cricket square and nets facilities. The estimated cost is in the region of £150,000. This will enable us to start our first Colts team and give Watermead a much needed communal facility.



**watermead  
dental centre**

*The Village Square  
Watermead  
Aylesbury  
HP19 3FX*

*Telephone : 01296 330700  
Emergency : 0860 534134*

## **Opening times**

**9 — 8 Tues, Wed, Thurs**

**9 — 5 Mon, Fri**

**10 — 1 Sat**

Marierose F. O'Hagan B.D.S  
Lythan Davies B.D.S

## **Dental Excellence in the centre of your village**

NHS exempt groups between 10am + 4pm  
7 Day emergency cover  
Competitive rates

**Call in now to make your  
appointment or 'phone  
330700**

**Are you due?**





# Watermead Wildlife Watch...

## SPRING INTO ACTION

That certainly seems to be the motto of birds on and off the lake, partners have been chosen and next on the agenda is finding a suitable venue for nest building. We had a very good year last year, two pairs of breeding swans, Henry and The Duchess on the large lake who managed to rear five healthy cygnets in a nest that was truly a work of art and George and Lady on the smaller lake with four, I don't think George has quite got the hang of building requirements yet leaving Lady to do the best with whatever bits and bobs he brings, also a pair of Canada Geese bred successfully, although this was not achieved without drama, George was not at all happy sharing his territory and did his best to keep Geese and Goslings out of the water, after all Henry stood guard at the stepping stones and woe betide any winged creature that dare venture into his zone. The Coots also reared their families, as did the Mallards, although sadly the Drakes far outnumbered the Ducks. Unfortunately we had casualties last year, and paid many a visit to St. Tiggywinkles with injured or dying birds and as ever are very grateful for their help.



"Henry on the ice"

### The Watermead Village Residents Association

#### Committee Members and contact numbers

Chairman	Michael Shrimpton	—	397963
	Fax 393151, mobile	0468 298559	
Secretary	Mary Singleton	—	28569
Committee	Suzanne Staines	—	87954
Committee	Ian Barr	—	81554

Editor & Design, Village View — John Willisroft

Tel : 01296 26002

Fax : 01296 26002 (auto-switch)

email: john@icatch.powernet.co.uk

#### Quick Editorial...

This is the first *Village View* I've edited, although I produced the layout for the Christmas issue. I hope you enjoy reading it, and it proves to be a useful source of information for you. I'm happy to spend time to produce a good publication because I enjoy graphic design and publishing, not because I have any political views on how events on Watermead should be run or who should run them. I would like many of you to contribute to *Village View*, and you will be able to see when an issue is due by keeping an eye on the village notice board in the tunnel to the piazza.

John Willisroft



"Henry and the Duchess on the frozen lake"

Well as we enter this years breeding season after a harsh winter lets hope Henry and George reach a compromise and allow other Swans and Geese to share the lakes without raging battles a pair of Greylag Geese landed yesterday but Henry soon moved them on, this is such a shame, pity we can't send them to obedience training! However, we do have a variety of wildfowl at present including, Pochards, Tufted Ducks, Moorhen, Coots, Grebe, Heron, Mallards, Gulls and the odd domestic ducks, Magpie, Black East Indian, Indian Runners, Call Duck and more recent visitors - Goosander and Pintails, so one things for sure, its never boring, every season bringing change. So lets hope for a good Spring with lots of new life.

**Feeding- Wheat, Mixed Corn, Pellets (from pet shops) and wet bread (dry bread causes all sorts of problems).**

Well worth a visit - Water Fowl Sanctuary & Rescue Centre, Wiggington Heath, Nr, Hook Norton, Tel : 01608 730252, a warm welcome is assured especially to children who are encouraged to handle chicks, ducklings and baby rabbits.

Linda Jones

## P.J. Decorators

INTERIOR & EXTERIOR  
DECORATORS

**CALL: (01296) 85705**  
**MOBILE: (0850) 444712**



- FREE ESTIMATES GIVEN
- 24 HR SERVICE – WORK THE HOURS TO SUIT YOU
- LARGE AND SMALL CONTRACTS WELCOME
- ALL ASPECTS OF DECORATING FROM START TO FINISH BY SKILLED DECORATORS
- SPECIALISTS IN HIGH QUALITY WALLCOVERINGS & WALL FINISHES
- COMMERCIAL, INDUSTRIAL & DOMESTIC
- NO JOB TOO SMALL





# Watermead Remembers

The prints of the painting by Denis Pannett G.Av.A. are a spectacular reminder of the VE Day celebrations in Watermead.

After the limited edition of 500, each with a certificate of authentication, the plates will be destroyed. Each print signed by the artist Denis Pannett G.Av.A. and Bomber Command veterans Ricky Dyson GM, 'Tiny' Cooling, Harry Le Marchant and Harry Purver.

Order from **Michael Shrimpton** — 397963  
**Philip Toler** — 432405

Print only, at **£29.50**

Framed prints:

(Hand-lined) A type — **£129.50**

(Double border) B type — **£107.50**

(Framed) C type — **£72.50**

(Framed) D type — **£72.50**

(Access/Visa/Diners Club accepted)



## OPEN ART EXHIBITION

at

Aylesbury Grammer School

Walton Road

Aylesbury

Saturday, 27 April 11.30am — 5.00pm

Sunday, 28 April 11.00am — 5.00pm

Exhibition and sale of work (including *Watermead Remembers*), by professional and local artists in aid of school funds.

- New Pine
- Old Pine
- Giftware
- Framing
- Craftwork
- Bargain Priced Pictures

**183 Cambridge St.  
Aylesbury**

(Near The Weavers Pub)

OPEN TUES — SUN  
AND BANK HOLIDAYS

**01296 399183**



**TREE HOUSE**

## QUALITY

*Our new and reclaimed handwaxed ranges are solid pine throughout... beautiful furniture that's made to last.*

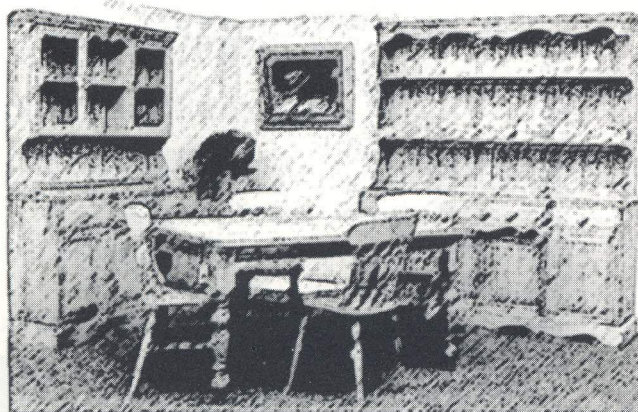
## SERVICE

*Free delivery to Watermead*

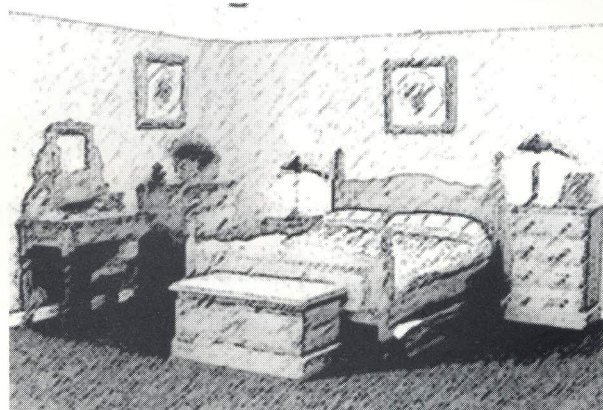
*"Made to measure" option*

*Credit schemes available*

*(Subject to status, written details on request)*



## Quality Pine Furniture



## VALUE

### Buckingham Range

Double Wardrobe.....£219.95

Five-drawer Chest.....£109.95

Three-drawer Bedside Cabinet.....£69.95





# Neighbourhood Watch

2 important facts you should know about your Neighbourhood Watch...



Watermead now has the **lowest** crime rates in Aylesbury; in fact, less than 3% of all crimes reported to the police

Several arrests have been made as a result of information supplied to the police by members of the Neighbourhood Watch

---

There are nearly 1000 properties occupied on Watermead with only 25 co-ordinators to cover them.

**If we want to keep crime at bay we urgently need more.**

---

So, if you

- are male *or* female
- *care* about the community you live in
- can spare a *few* minutes of your time  
(unpaid, unfortunately)
- would like to know more, or even better,  
*volunteer* your help.

**Please contact:**  
**Sandra Gowling**  
**Area Co-ordinator**  
**22 Larkvale**  
**01296 20956**

---

## Watermead Lakes

### Lakes

Lakeside Chairman Michael Shrimpton is to meet a representative of the National Rivers Authority and the Chief Engineer for the River Tame system, following concern over water levels. Lakeside Land Ltd. own Watermead lower lake but primary responsibility for water levels rests with the NRA.

### Fishing

Following a stream of complaints about disturbance to residents by night-fishing on Watermead Lake the Lakeside Board reached agreement in December with the fishing syndicate who lease the fishing rights, to restrict night-time fishing, repair damaged bank areas and pay a modest annual fee of £500 — although the top lake is owned by Mr. Skinner the fishermen fish from the community's land. There is no legal right to fish at night. At the last minute the syndicate pulled out of the agreement, which had

only been reached after a consultation exercise with the residents most affected and drawn-out negotiations. Matters reached a head when several fishermen trespassed on Sunday 3rd March and had to be ordered off. A meeting has been scheduled for 16th March (after this issue goes to press) in an effort to resolve matters.

If any residents would be interested in attending keep-fit classes, or Tai Chi or similar, then please contact Dorothy Toler on 432405.

Dorothy would like to hear your suggestions for events or activities you would like to take part in at the village hall or elsewhere on Watermead. If you have any ideas don't keep them to yourself — share them!



# *'Boathouse'* *Restaurant and Bar*

**Due to open mid-May**

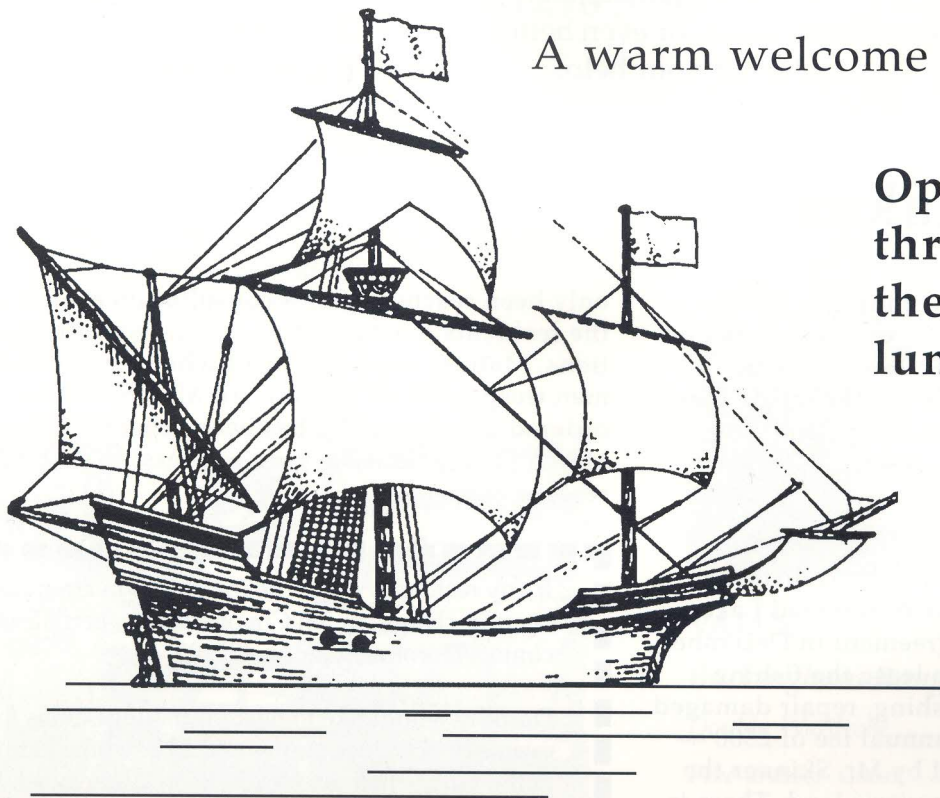
Set amidst award-winning Watermead and overlooking the large lake.

Choose to dine in the newly fitted-out traditional 'Galleon' style panelled dining room, or 'al fresco' on the wooden terrace overlooking the tranquil water.

Exciting menus — specialising in seafood and chargrilled steaks.

A warm welcome awaits.

**Open daily  
throughout  
the year for  
lunch and dinner.**





## Why should you try us, why are we different from all the rest?

**We have** — friendly, professional  
hairdressing and beauty  
therapists to give you the  
best advice.

**We do** — take time to listen to  
what you want and we  
care about our clients.

**We can** — offer you an extensive  
range of beauty, body and  
slimming treatments. try our  
sunbed for a natural looking  
tan. Sunbed room complete  
with fresh towels and shower  
facility

Hair and beauty Salon

*Easy Parking  
Open until 9pm*

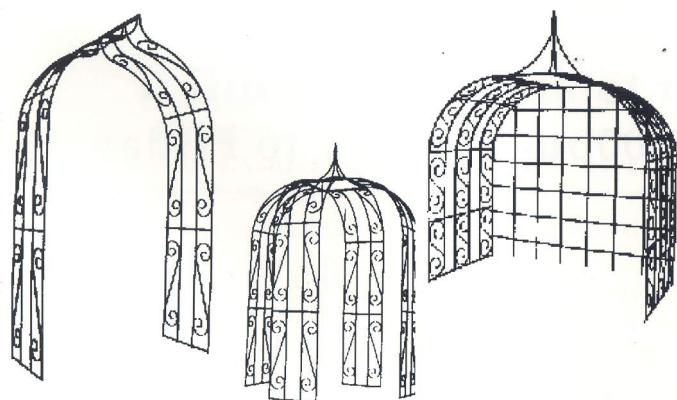
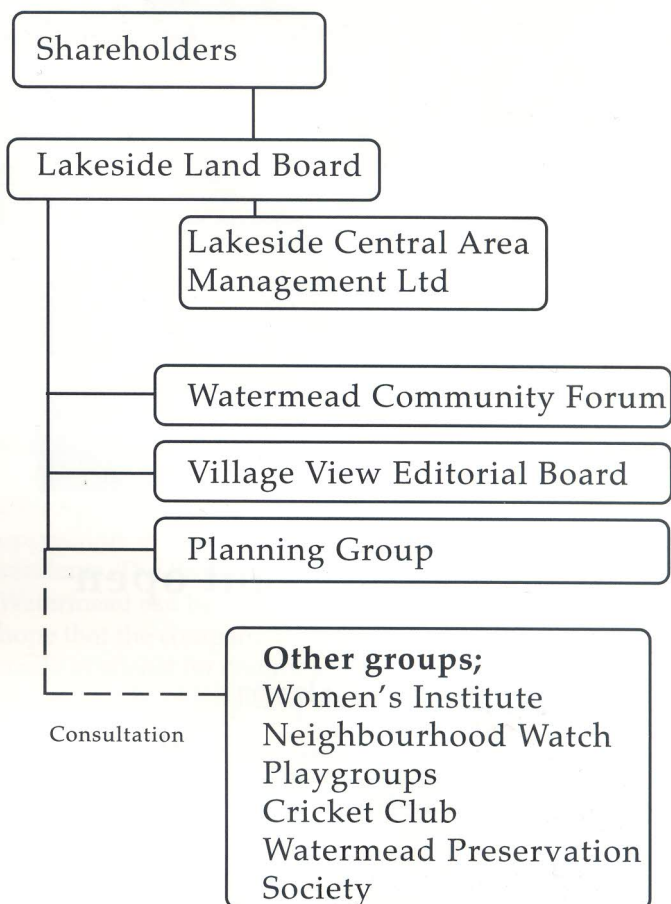
# AVANTI

HAIRDRESSING  
AND THE  
BEAUTY COMPANY

Tel 88138

Watermead Village Piazza

## Proposed Lakeside Land structure



SOLID WROUGHT IRON ROSE  
ARCHES, BOWERS, GAZEBOS  
AND OBELISKS IN SCROLL OR  
LATTICE DESIGN

5 year guarantee

Delevered Direct to your home

For further details ring  
01296 338393

## LAKESIDE LAND LTD.

### MISSION STATEMENT

It is the mission of Lakeside Land Ltd. to:

- Represent the interests of the whole village as Watermead's community company
- Encourage positive development in keeping with the unique character of Watermead
- Provide a forum for community involvement and feedback
- Support and encourage local enterprise
- Protect and enhance Watermead's natural environment
- Manage the company's assets efficiently and maximize revenue for the benefit of the community

NB: Nothing in the above shall conflict with or take precedence over the Memorandum and Articles of Association of the company.



## Important dates for your diary

Good Friday 5th April  
Easter Sunday 7th April  
Bank Holiday Monday  
8th April

Bookings for the  
restaurant being  
taken now.



# THE WATERMEAD INN

Bar open ALL DAY  
EVERY DAY

**Carvery Restaurant open**  
**7 days a week**  
12 noon — 2.00pm

6.00pm — 9.30pm

12 noon — 9.00pm  
on Sundays

Wide selection of  
bar meals available  
12 noon — 2.00pm

6.00pm — 9.30pm

7 days a week

---

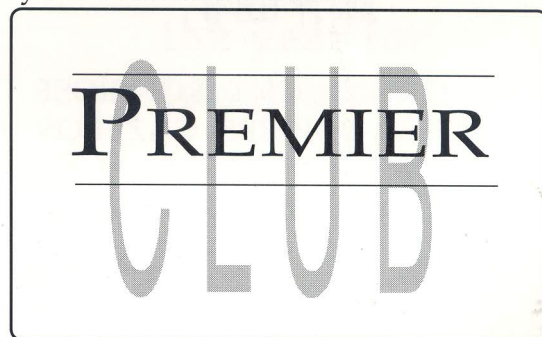
**"Early Diner" — 20% off your total restaurant bill if  
seated between 6.00pm and 7.00pm Monday to Friday.**

---

Join our Diamond  
Circle Club for  
the  
over 60's.



Apply today for our Premier Club  
Card and enjoy a 10% reduction off  
your restaurant bill...



...any day of the week.

For bookings please call in or phone

**01296 - 433123**

