

VILLAGE View

THE WATERMEAD VILLAGE NEWSLETTER

Printed by Driftgate Press

Published by Lakeside Land

Volume 3 issue 2

Nightclub Settlement

New Ski and Sail (now Captain's Cabin) operator Chris Floyd has reached a draft agreement with the Board of Lakeside Land over the use of the land and premises as a nightclub. He has agreed to a covenant against nightclub user in similar terms to that already binding the restaurant operator Gary Band, for the duration of his lease. That is expected to be for 3 years with an option to renew and means that there can be no nightclub proposal effectively until the new century. It also opens up a new era of co-operation between the businesses on the other side and the community, marked by the willingness of both businesses to contribute financially to the planned Charity Fire-

works Night on 2nd December and their participation in the Watermead Business Forum (the name chosen for itself by the proposed Watermead Chamber of Commerce).

Draft agreement has also been reached on fishing, bringing to end a campaign of trespass on Lakeside's land. A limit of two bivouacs per night will be permitted clear of the tree line on the western shore, on payment of a small annual fee. The draft agreement is being observed by both sides and is working well. Both sides have instructed solicitors and legally binding agreements should be in place not long after this issue goes to press.



"Full steam ahead, Dad!"

See 'Wildlife Watch' page.

Summer 1996 Edition

In this BIGGEST EVER, 16-page issue...

Chairman's Brief on page 2

National Lottery at WM Newsagents on page 2

WI & Beirton Parish on page 5

Events on Watermead on page 7

Wildlife Watch on page 12

'Two for one' Inn voucher on the back page and more...

Cable

Bell Cable-Media have announced that Watermead is to be cabled in early 1997 (possibly sooner). They will carry all satellite programmes and there will be an opportunity to switch from satellite to cable. Not too many on the estate will mourn the loss of the dishes, which have proliferated. Outside aerials (both TV and satellite) are of course banned across the whole estate, which is why all our homes are designed for indoor aerials.

Garden Centre

The new garden centre has been approved and will be sited opposite the Holiday Inn Garden Court Watermead. It is hoped that construction will start before the end of the year in time for a spring opening. There will be a full report with plans in the next issue. Hopefully we won't have far to go to collect our trees for Christmas 1997!

Village View on the Internet

Web address:-

TO BE ADVISED





Chairman's Brief

Photograph by permission of the BBC

'Newsnight' 21st May 1996
presented by Jeremy Paxman.

May I begin by thanking you all for your support at the residents AGM on 25th April. Your show of confidence was much appreciated and I am grateful for the many private messages of support.

Much of my time since then has been taken up with planning battles. The boathouse controversy was a complete fiasco. That application

should have been thrown out. Instead it was granted by a planning committee which failed to conduct a site visit and seemed with respect to have a limited grasp both of the issues and the fundamentals of planning and administrative law. I am sorry to have to criticise our local councillors but both backed down at a crucial moment. As you will know I most emphatically do

not see this as a political post and I have always

resisted requests to stand or even canvass for my party on Watermead. I am not prepared to endorse any candidate as Chairman of Lakeside Land, which must be right. I am not prepared however to see the community let down by its elected representatives without making comment. Our local member on the planning committee did not even vote against the so-called boathouse and we were left with verbal assurances of support which were not, with respect, backed by action when it was called for. It may be that the View will need to draw the voting record of our elected representatives to the community's attention at an appropriate time. I cannot imagine that anyone on Watermead will be fooled by the attempt to call the proposed northern by-pass a "distributor road" built only to "local standards". It will of course distribute traffic: from the A41 east of Aylesbury to the A41 west of Aylesbury, and vice versa. It is in short a by-pass by another name. "Local standards" presumably means the road surface will swiftly be broken up by 40 ton lorries so the new road will suffer from endless roadworks and congestion. Please go to the AVDC display at the Village Hall on 24th July (we weren't given much

notice either). I would respectfully invite you to protest against this madcap scheme, which will damage our environment and spoil Watermead's comparatively tranquil and semi-rural character for all time. Nor am I much taken with the idea of an estate the size of ours on the other side of the Buckingham Road and I am scandalised that an historic Civil War battlefield site should be desecrated in this way (I am aware that much of the original site will not be built on but to suggest that it would be left undisturbed is absurd). I have seen enough of this asinine scheme to realise that it should be hammered into the ground.

Many of you will have seen or heard of our enforcement action against trespassing on the western shore of the lake. The issue here was quite simple - we reached an agreement after much negotiating effort with the fishing syndicate which they then pulled out of. It seems that issue has now been settled but the principle remains that the Board will take its responsibility to protect the assets of the company (and hence the whole community) seriously. It has a duty in the matter and it will see that duty carried out. We welcome visitors to Watermead but we do not wish to see our hospitality abused. In particular we expect without qualification

WM Newsagents

Free Delivery of Newspapers!
First 4 weeks
for new
Watermead customers

"Its much easier to use the newsagents on site!"

- Bored with the Olympics? Rent out a top video. Invite Demi, Arnie and Hugh into your home this Summer
- "It could be YOU!". National lottery and instant scratchcards available NOW! Good Luck!

Players must be 16 or over.



Watermead Village Piazza
01296 338435

that we can persuade the Post Office bureaucracy, which appears to be stuck in the 1960's and believe that you shouldn't be able to buy a stamp without getting in a motor car, to recognise that Watermead needs a sub post-office. Well done to Camelot however for agreeing to a National Lottery terminal. I also want to see Scottish & Newcastle's head office agree to an off-licence. I don't like to see trade restrained in this way and I cannot see what objection there might be to an off-licence limited to wines and spirits.

I am looking forward to the new restaurant being opened. There is a triple-lock on its use as a restaurant by covenant with Lakeside Land, licensing and planning restrictions. We are working on the assumption that it will be a restaurant. I know that many residents have argued that this is an ideal location for a good eatery and I'm sure it will be seen as an added amenity.

Many thanks to Ted Tootell (formerly RAF V-Force and BEA/British Airways) for the aerial reconnaissance in his beautiful little Auster. It gives an added perspective on planning and land-use issues to be able to see things from upstairs. Nice to see our friends from BBMF roaring over Watermead in the Lancaster again last month, on their way (I

think) to Biggin Hill. Wonderful sight.

It was heartening to see so many people volunteer at the AGM. We still need people on the distribution side of Village View, to go on a register of stewards and to support the work of the Forum. If you feel you have any skill which could be useful please let us know. Well done to the many people now active and involved in the life of the community.

Many of you have expressed your concerns about the safety of the spine road. I entirely agree and we have been pressuring Bucks County Council, who have adopted the road to implement vital safety measures such as speed limiting signs, a warning re the nursery and parking restrictions.

They have however, been almost totally uncooperative. It seems that nothing will be done until someone is injured, a state of affairs that only a bureaucrat

could justify. Their letter responds "...limited financial and human resources are targeted on sites where people are being killed and injured on a regular basis..."

WVRA AGM Report

What turned out to be final AGM of Watermead Village Residents Association was better attended than every other AGM put together! A huge turnout saw residents queuing right across the piazza and numbers of residents had to hear the proceedings from outside the hall itself. The meeting was chaired by Michael Shrimpton, who explained his reasons for turning the winding-up vote into a vote of confidence. After a debate in which all points of view were represented, the motion to wind up WVRA and transfer its assets to Lakeside Land Ltd. (the cash assets being held in trust for payment to the contractors for improvements to the village hall) was carried by 244 votes to 14, with 6 abstentions. The result was greeted with generous applause and the WVRA has now been formally wound up. In its place the new Watermead Community Forum and Village View Editorial Board have been established and each have started meeting. The minutes of the Forum are going up in the tunnel notice board. Addressing the meeting after the vote Michael Shrimpton thanked the community for its support and promised to continue his work on behalf of Watermead.

Why not hire the Village Hall?

Weddings

All occasions catered for...

Birthdays

Christenings

**Buffets, Licenced Bar,
Live Music, Disco,
Tea Dance...**

Parties

You name it, I'll be happy to discuss your requirements.

DISCOUNTS FOR WATERMEAD RESIDENTS

*Funerals
(Wakes)*

**Phone 'The Watermead Inn'
on 01296 433123
and ask for David.**

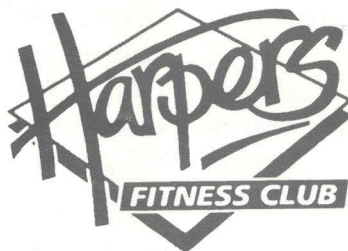
*Special
Occasions*

In association with Lakeside Land Ltd.

Eat, Drink and be Merry...

... and then you can simply walk home!

Harpers Fitness Club
Buckingham Road
Watermead
Aylesbury
HP17 3FY



Membership
Enquiries
01296 330311

Ask anyone. Once you've got the fitness bug the feel-good factor keeps you hooked. You feel wonderful. You look terrific. Muscles tone up, excess weight drops off and you all but crackle with new-found energy. What they don't tell you is about the tricky bit — motivating yourself to get started. That's where **Harpers** come in.

Membership includes

- 2 Dance Studios
- 2 Gyms
- Swimming Pool
- Beauty/Relaxation Dept.
- Creche
- Tennis
- Packed Kids Programme

So call now on
01296 330311



Special offer
for
Watermead
Residents

12 day FREE membership
or
50% discount off your enrolment



For membership details
contact Harpers today

The Watermead & Weedon Women's Institute

At the August Monthly Meeting
the Institute will be holding its
Annual Quiz Evening.

Thursday 1st August
7.30 pm
Village Hall

New members to our institute will
always be given a warm welcome

Contact Suzanne Staines
President, on
87954



*Try a Salon with a
real difference!*

*Why are we
different from all
the rest?*

- We take time to
listen and help you
choose the right cut
- We give tips to
help you get the best
results at home
- We only use and
recommend luxury hair
care products

New opening hours...

Mon – Thurs
8.45 – 9pm

Friday
8.30 – 7pm

Saturday
8.30 – 4pm

Make us your first and only choice!

**Ring us now... and find out what
we can do for you**

RING NOW — 01296 88138

AVANTI
HAIRDRESSING
AND THE
BEAUTY COMPANY

Bierton Parish News

St. James the Great, Bierton

Most of the important festivals of our
Church seem to fall between December and
May, so now there is time for a few 'extras'.
So it was that on Saturday 29th June we had
our Summer Carnival. Lots of fun, many old
friendships renewed and over £1,000 raised
for our Restoration Fund. Earlier, on 13th
June, we were the host for a Confirmation, at
which 30 candidates from four churches
were welcomed into full membership. Your
scribe acted as Bishop's chaplain, which
meant having three hands, to hold, take or
give all the things that the Bishop needed
during the service, without dropping any of
them! I made it!

The Ellesborough Silver Band is celebrating
its centenary at present. It played for the
26th time at this year's Carnival and will
play a celebration concert in church on 30th
August.

It will soon be Harvest Festival at this rate!
For details of services or the concert you can
ring 23920 (Vicarage) or 26743 (me).

Have a good holiday!

Anne King

Any young mothers or 'doting Grandmas' who
might be interested in girl's dresses handcrafted
from Cornwall — age 0 to 5 (bigger sizes can be
ordered) are invited to contact Beryl at 6, The Osprey
Watermead — 01296 338393 and she will be pleased
to arrange for you to view. Up until January of this
year she had a Craft Shop in Great Missenden but is
continuing to be an agent for "Rosie Pocket" dresses
which are not only unique but also very versatile.



Your 'tired' dried and/
or silk flower arrange-
ments can be restored
and given a "new lease
of life" by ringing

338393

Councillors Back Down

Watermead's two councillors, Raj Khan and Greta Littlewood, have backed down from supporting Watermead's case before the July Full Council meeting over the alleged boathouse applied for on behalf of a body described as Aylesbury Canoe Club. The application, which was only made on 7th March 1996, was rushed through by Aylesbury Vale District Council planners and rubber-stamped by the Planning Committee on 9th May. There were disgraceful scenes at the planning committee as Matthew Harrington, a resident of Watermead and an experienced planning lawyer in his own right, was all but ignored by the members, some of whom were talking over his submissions.

The origins of the dispute go back to early '95, when the Lakeside Board was approached by one Steven Hinds, who describes himself as Chairman of Aylesbury Canoe Club. The Board took professional advice on the plans, which were for a large and architecturally challenged building on the nightclub developers' land in full view of residents, between

the lake and the ski-club. The Board did not support the plans but indicated that it might support a revised scheme, preferably on land under community control to exclude the risk of nightclub user. In March the 'Canoe Club' tried to bounce an almost identical application through. An objection was lodged but brushed aside by the planning committee. The Board's suspicions were aroused by the scale and location of the building and the fact that Aylesbury Canoe Club was admitted by its "Chairman" on 8th May 1996 to be defunct. It was further admitted and subsequently confirmed by nightclub developer David Skinner that his company Turfgreet Ltd., which owns the site, had no legal agreement with the Canoe Club allowing them to occupy the site. The legal advice to the Board was that ownership of the building would reside with Turfgreet Ltd.

The Board were amazed to discover that AVDC were proposing to make available public funds to build this eyesore and a formal objection was lodged with the External Auditor. Planning permission has now been formally granted but a breakthrough was achieved following Michael Jackson's departure from Ski and Sail. The new operator has

withdrawn a proposal to restore power to the lake and has put forward a plan for hiring rowing boats. The Board has swung behind this, following the preference of the community expressed at the Jan. 1994 public meeting for non-powered watersports on Watermead Lake. Lakeside will design and lease and the operator will build a professionally designed boathouse on Lakeside's land, in a more discreet location which will be landscaped. This will also accommodate Aylesbury Sea Cadets and Aston Clinton Adventure Club. If Aylesbury Canoe Club is re-established it will be accommodated provided that their planning permission is revoked.

At an urgent meeting on 12th May 1996 Councillors Littlewood and Khan (both Liberal Democrats), who represent Elmhurst Ward (which presently includes Watermead), agreed to support a move at Full Council to over-turn the planning committee's decision. Lawyers were consulted and Lakeside's solicitors threatened a judicial review in the Queen's Bench Division of the High Court in London, as AVDC's officers said they would implement the committee's decision even after they were warned it was going to

full council. The matter went to the Liberal Democrat's group leadership. The precise details of what went on behind the scenes in the Liberal Democrat group have not been made clear, but both councillors backed down and refused to put the motion on to the order paper after it had been drafted, undermining the judicial review.

The fall-out from the boathouse will continue for many a year and it is expected to be an election issue on Watermead. AVDC has badly damaged its reputation in planning matters (one member of the planning committee actually admitted not knowing where the proposed boathouse was going) and the contempt shown for this community's interests will not be forgotten. At its June meeting the Lakeside Board approved putting in place a quarter of a million pound legal expenses policy, which will give it the financial and legal clout to hammer AVDC the next time it breaks the law.

Alterations & repairs undertaken.
Reasonable Charges.
Tel: 338393

GOLDEN BROWN SUNBED HIRE AND SALES

We hire fast tanning R.U.V.A sunbeds all fitted with 8 fast tanning tubes delivered *free* to your home in Watermead

Full instructions given
We have ex-hire sunbeds for sale from £199.00 and new sunbeds from £339.95

A FREE WEEKS SUNBED HIRE WHEN YOU BOOK 4 WEEKS OR MORE

We run a testing and re-tubing service
Please ring Aylesbury 398015 to book your sunbed

(all sunbeds conform to British Standards)

Credit Cards accepted

We also hire bouncy castles

P.J. Decorators

INTERIOR & EXTERIOR
DECORATORS

CALL: (01296) 85705
MOBILE: (0468) 141446



- FREE ESTIMATES GIVEN
- 24 HR SERVICE - WORK THE HOURS TO SUIT YOU
- LARGE AND SMALL CONTRACTS WELCOME
- ALL ASPECTS OF DECORATING FROM START TO FINISH BY SKILLED DECORATORS
- SPECIALISTS IN HIGH QUALITY WALLCOVERINGS & WALL FINISHES
- COMMERCIAL, INDUSTRIAL & DOMESTIC
- NO JOB TOO SMALL



Forthcoming Events at Watermead

Village Hall Rates

Mon to Fri Hourly — £7.00

Sat to Sun Hourly — £11.50

Sun to Thur Evenings — £35.00

Fri to Sat Evenings — £52.50

25% discount on bookings to all Watermead residents
30% discount for 12 or more advance bookings

Contact :
Dorothy Toler
01296 432405

Fireworks

Charity Fireworks Night,
sponsored by Watermead Inn,
Captains Cabin and
the Restaurant.

Watermead 2nd November 1996

Music starting at 1900

Fireworks at 1930

Food and drink available

Fundraising for
Bomber Command Association and
Royal British Legion Poppy Appeal.

Volunteers (at least 20) needed for
stewarding team : please contact Michael
Shrimpton, or any member of the Board.



Publications dates:

Easter 1st April
Summer 18th July
Autumn 1st Oct.
Christmas 13th Dec.

Please arrange adverts or
articles *at least* three weeks
prior to publication date.

If you have ideas for
articles, please write in as
we have a *severe* shortage
of authors!

Rates

Residents
1/4 Page £15
1/2 Page £30
Full Page £60

Non-Residents

1/4 Page £25
1/2 Page £50
Full Page £95

Rates subject to change without notice

Little Perishers Playgroup

Mon, Tues, Weds, Thurs 9.30am — 11.45am
(9.15 start from Sept — watch out for change of name!)

Contact Daphne on 393131

Mothers & Toddlers

Weds 2.00pm — 4.00pm

Fri 10.00am — 12 noon

Contact Sue on 435282

Stillwaters Christian Church

Sunday 10.00am — 12 noon

Contact Ian on 661401

Aylesbury Town Band

Weds 7.30pm — 9.30pm

Contact Paul on 81909

Women's Institute

1st Thurs of the month 7.00pm — 9.00pm

Contact Suzanne on 87954

Watermead Village Community Forum

Presents

prizes QUIZ NIGHT

At the village
hall
on Friday
27th September
at 7.30 pm



**Entrance fee £6.00 per
person payable in
advance** (tickets will not
be available at the door)

Tickets are limited so
please book early to
avoid disappointment

Includes
Fish & Chip
Supper



To obtain a team
entrance form
Tel: Katie on 398685
or Norman on 432932

Open to Watermead Residents only (includes family & friends)

Let us put the back into your Business

The boring jobs we do, include:-

Book-keeping
Invoices Typed
Paye — VAT
Word Processing

Available on an hourly basis.
Book-keeping systems to suit your business.
Large or small businesses.
Working at your office or our own premises.

If you would like more information, call:-
Carol Theobald — 26173



JADE



Book-keeping / Business Services
Watermead

Andrew Furmage



Interior and Exterior
Window Cleaning and
Small Works Specialist

Working *Exclusively*
in the
Watermead Area

CALL 01296 331606

WATERMEAD VILLAGE ORGANISATIONS

WATERMEAD COMMUNITY FORUM (WCF)

The WCF has been set up to continue to work of the Watermead Village Residents Association and to bring together the various groups on Watermead such as Neighbourhood Watch, children's playgroups, the Cricket Club, the WI, etc.

Our Statement of Aims is as follows:-

- To ensure all residents of Watermead have the opportunity to put forward their views on the management of the land owned by Lakeside Land (whether they are shareholders or not).
- To represent the views of the residents of Watermead to the Board of Lakeside Land.
- To arrange social functions in order to engender community spirit in Watermead Village. (NB The main purpose will be to encourage participation. If a profit is made on any function the money will be used to subsidise other more costly functions.)
- To provide a forum for residents to make suggestions to improve the amenities at Watermead.

Current members of the WCF Committee are as follows:

Mary Singleton - Chairman

Debbie Bean - Neighbourhood Watch

Suzanne Staines - Chairman, Watermead & Weedon Women's Institute

Norman Joseph

Andrew Collinson

Jean Ashford

Katie Babbs

Derek Adams

If you would like to join the Committee please call Mary on 28569. We would be particularly interested to hear from anyone who represents any of the local groups or residents associations on Watermead. We desperately

need a Secretary who will take the Minutes of our meetings.

We plan to hold an open meeting in the Village Hall soon and welcome anyone who is interested to attend. This will be advertised on the notice board in the "tunnel" in the Piazza. Watch our for our Minutes also posted on this notice board for information of what we are up to!

Our first social event is going to be a Quiz Night to be held in the Village Hall on Friday 27 September 1996. Why not get a group together and come along for a fun evening. Call Katie Babbs (398685) or Norman Joseph (432932) for tickets.

The Watermead Community Forum has been set up to represent ALL residents of Watermead.

Mary Singleton.

WATERMEAD PLANNING GROUP

Watermead Planning Group are a collection of professionals involved in town and country planning and development, all of who live on Watermead, and practice in and around Buckinghamshire and the home counties. The purpose of the group is to:

1. To scrutinise major development proposals which could affect the village
2. To make representations on behalf of the community to decision makers in local and central government about proposals
3. To consult with potential developers over their proposals so that they respect and enhance the character of the village
4. To ensure, as far as possible, that those in authority exercise control over development in the interests of the village and it's community. Mathew Barrett, a member of the planning group, who made representation to the Planning Sub-Committee said;

"I felt that the sub-committee took very little account of what was put

before them. They had made up their minds that the club was a 'good cause' and had to be supported by the council at any cost. Our doubts about the bona fides of the club were rejected out of hand"

Planning group ongoing issues;

1. No consultation with Watermead residents or bodies before issue of AVDC produced development plan brochure.
2. New Aylesbury by-pass, which was opposed last year as a southern route, proposed now as a northern route be approximately 1 mile along the A413 towards Buckingham.
3. Site proposal for another large housing development on the land opposite the Holiday Inn roundabout on the Buckingham road.

4. AVDC will be explaining their proposed plan on the 24th July 1996 at the Watermead village hall between 9.00am and 6.30pm.

The planning group believe all the above issues will have implications for all residents of Watermead. Forms for complaints and other comments can be obtained from AVDC at Exchange Street and must be returned by the 16th August 1996.

Contacts:

Jan Habbleshwaite (434052)
Mike Liston (29217)

PRESERVATION SOCIETY

The preservation society was formed a number of years ago by a group of Ryco home residents to voice fears about future development on and around the Watermead village.

The society's aim was to protect the original character and spirit of the village development under an uncertain future at that time. The preservation society has now merged into the Watermead Planning Group and all inquiries should be directed to the WPG.

Contact:

Mike Liston (29217)

BYPASS BATTLE

With minimal local consultation AVDC have published their Issues Paper in connection with the Aylesbury Vale district local plan. Everyone is urged to try and visit the Village Hall on Wednesday 24th July, between 1000 and 1830, where these disastrous proposals will be on view. Protests can be made to: District Planning Officer Planning and Building Control Department AVDC Exchange Street, Aylesbury HP20 1UB

Any comments received after 1700 on Friday 16th August 1996 will be ignored. The Board of Lakeside Land considered the proposals at its July meeting and is seriously concerned at their impact on Watermead. The Board is urging as many residents as possible to write in and oppose the following :

(1) Proposed Aylesbury Northern Bypass. This will pass within about 2,000 yards of Watermead's northern boundary (please

note AVDC's published map is out of date and does not show the existing edge of development on the northern boundary, tending to show the by-pass as further from Watermead than would actually be the case). Once the by-pass, inaccurately described as a distributor road, is built pressure will build up to develop out to the by-pass, which would then be described as 'in-fill' development. That would of course see Watermead surrounded by new housing development. The 30 year restriction (which has less than 25 years to run) only applies to the eastern boundary.

The other pressure which could build up would be for a second entrance into Watermead, leading to rat-running through the estate and destroying its character. (2) 800 houses on Buckingham Road, on the other side of the A413, right opposite to Watermead. This scheme will be entirely road dependent and it looks as though the planners want to use the existing A413 Watermead roundabout. This could cause major hold-ups at peak hour - remember 800

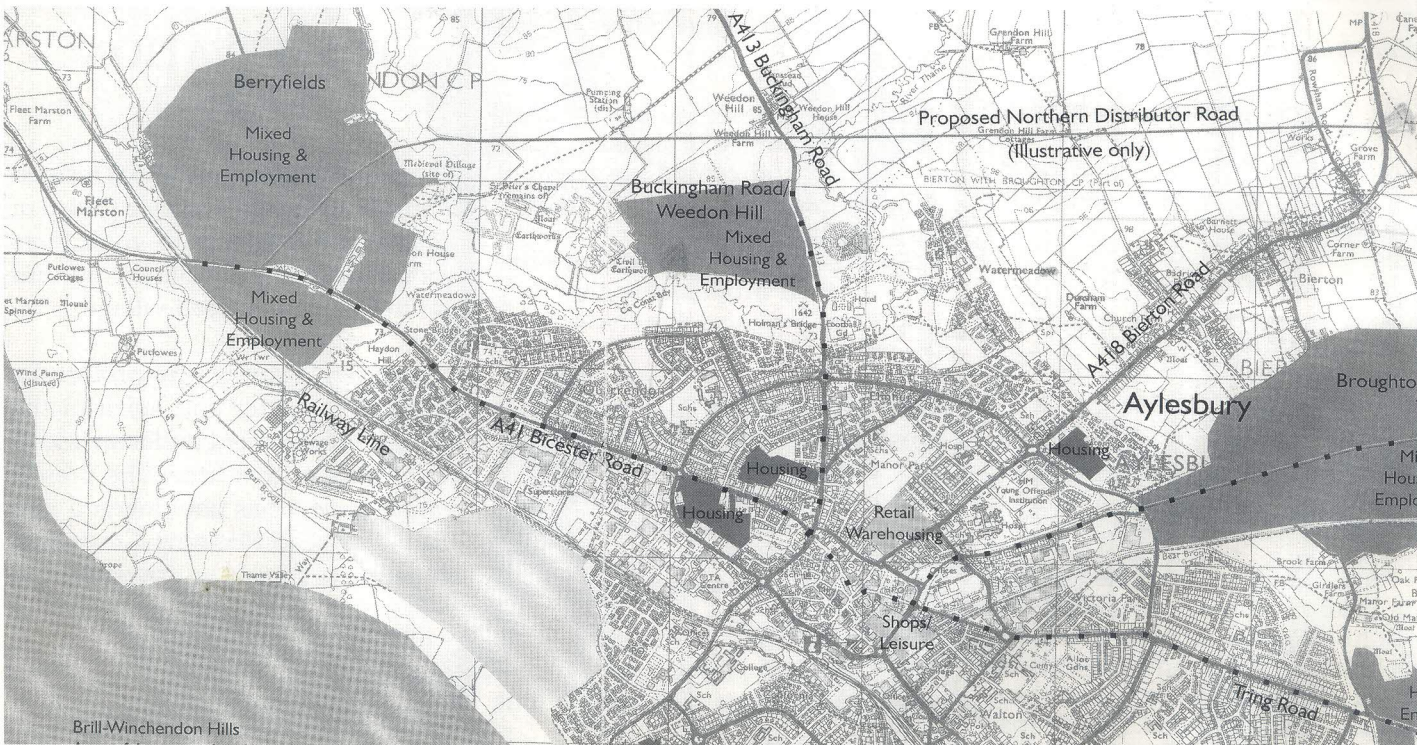
houses is about the same size as Watermead is now. This will generate roughly the same numbers of cars, all of which will attract priority over Watermead traffic when leaving the estate, given that the access road will join the roundabout from the west. Traffic consultants will need to be employed but extra traffic of this sort, aggravated by traffic coming into town from the by-pass could see daily traffic jams back to the Watermead Inn roundabout. This housing will also impact on the important Civil War battlefield of Holman's Bridge (1642).

Lakeside Chairman Michael Shrimpton has contacted the joint developers of Fleet Marston, which is not being supported by AVDC. This is curious because the Fleet Marston scheme is the only one proposed that is not totally road-dependent, being centred on reopening the railway line north of Aylesbury for passenger traffic (the line is already used by freight trains). This could be done in conjunction with the proposed Aylesbury-

Milton Keynes rail service (using existing lines). It is hoped to get more information about Fleet Marston to residents, because its adoption would allow the complete scrapping of the silly Buckingham Road scheme.

The Board are undertaking urgent consultations on Watermead, with Parish Councils of other threatened communities and other interested bodies, the Council for the Protection for Rural England, Transport 2000, OBRAC and other rail pressure groups and Friends of the Earth. The Planning Group is preparing a detailed briefing for the Board, which will consider it at its September meeting. You will be updated in Village View.

Remember : the lesson of the Twyford Down and Newbury Bypass battles is that the time to oppose these schemes is now, not after they have been approved or are being built. If you value the countryside around Watermead and care for your local environment act before August 16th.





Watermead Cricket Club News

by Jean-Paul Arama - WVCC Chairman

The cricket season is well under way and the Watermead team is doing quite well, there is always some adjustment as members relocate and new people join the Club. This year we have had 13 new players, although not all are able to play regularly. We got thrashed a bit in our early fixtures in the midweek league but we are coming back now and beat Chearsley - an old adversary - a few weeks ago. To add

insult to injury we got maximum points by taking 7 wickets and scoring over 100, the details for those of you that are interested are :

Player	Score	How Out
Dave Hodgetts	26	LBW
Phil Doyle	60	not out
Andy Holland	0	bowled
Marc Butcher	12	not out
Extras	10	
Total	108 for 2 in 11.1 overs.	

Chearsley :104 for 7 in 15 overs.

We now have a new Captain, Marc Butcher who has brought a great deal of enthusiasm and commitment to the Club. He has started regular nets practice sessions on a Tuesday evening at the

Watermead ground (subject to the grass being cut) and is helping in the management of the Club. However, we desperately need more help and are seeking additional Committee members. This and other matters concerning the future of the Club will be discussed at a WVCC members meeting which will be held at the Captains Cabin on Friday the 26th of July at 8pm.

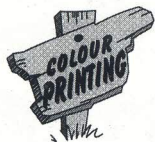
Finally, I am pleased to announce the first of several social events organised by the Club :

It's PARTY TIME.

We have arranged a Party Express Nightclub Tour, the tour price includes FREE admission to FOUR

(yes FOUR) of London's top nightclubs in the same evening. What's more you will get VIP entry with NO queuing and FREE pick up and drop off service from and to Watermead. You will also get FREE transfer between nightclubs.

All this for just £25 per person. The bus will be departing on a Friday night in late August or early September but you need to book now as we have already sold tickets and places are limited. The evening is open to all so why not invite a few friends and make it a night to remember. Please call me on 01296 24447 to book tickets or for further information.



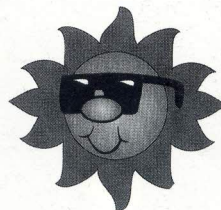
New

Driftgate Press

Commercial Lithographic Printers

- Digital Full Colour Copying
- Promotional Literature
- Company Stationary
- NCR Sets and Pads
- 4 Colour Process
- Typesetting and Design
- Manuals and Brochures

The Aylesbury Printer for Local Business



3/4 Griffin Industrial Mall, Griffin Lane, Aylesbury, Bucks HP19 3BP

Tel: 01296 84552



Watermead Wildlife Watch...

Well, the lake didn't exactly spring into action as expected, unfortunately the cold weather seems to have thrown nature into turmoil, hardly any ducklings to date, a few coots. I sadly witnessed the heron take a baby coot; (their main diet is fish but can take small mammals, insects etc..), but then the coots eat the grebes eggs so we just have to accept nature for what it is, heartbreaking at times.



"Charlie"

Happier news, Henry and the Duchess came up trumps again and hatched seven cygnets, six survived, and contrary to reports in the Bucks Herald are alive and well. Henry, irascible as ever, has completely taken over the large lake for his family. We had thirty five swans on the lake, and they were here for some time, but sadly, most of them have taken off, or been seen off. We gave a couple of swans refuge in our back garden (on separate occasions); Henry had chased, cornered and exhausted them, one had to go to St.. Tiggywinkles as he had a broken claw, and had been badly pecked, the other, rescued by the R.S.P.C.A., (our thanks to both parties) just needed a bit of rest and relaxation. The first swan was an absolute sweetie, but the second had definite shades of Henry, and our three call ducks - Orville, Norman and Gordon - did not take to this hissing King Kong arriving in their garden, and fled into

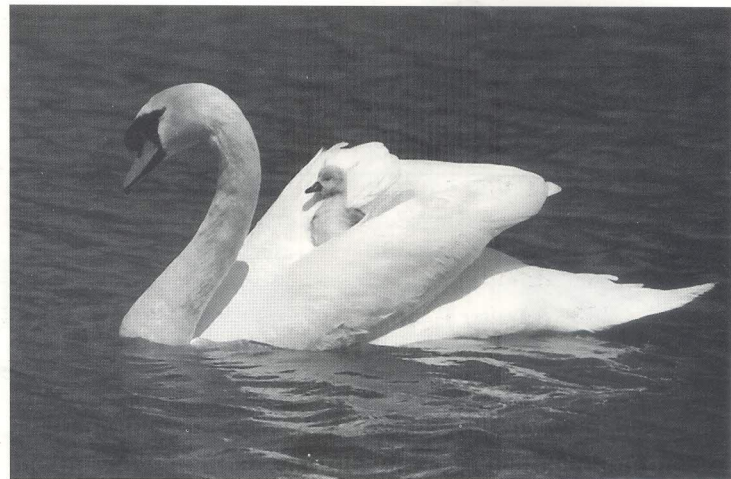
*The Duchess & family
on the large lake*



their house. We can't really be too harsh on Henry, he is only protecting his territory and family, just as George does on the small lake; pity it turns into such a battle.

Then along came Charlie (not an ordinary cygnet), the only cygnet that George and Lady hatched on the little Lake, I must say, I have a soft spot for these two, as against the odds - Lady nesting on the tiny island, bereft of nesting material, and George still clueless as to building requirements - they managed to produce one offspring, and George proudly ferried him around on his back until he gently nudged him into the water for his first swim, a tiny bundle of grey fluff alongside the giant George,

We were fortunate to have a couple of rare visitors, a cape shelduck stayed for one day, April fools day - I thought someone was playing a joke, but he was real, and I have the photos to prove it! Also a bewick swan, smaller than our resident mute swans, but he surely called the shots, pecking the residents out of the way, and first in line for the food - ideas of grandeur, that one! - he stayed for a while.



*"Full steam ahead, Dad!"
George & Charlie on the little lake.*

I would like to say a special thankyou to two gentlemen who walk their dogs - Nobby and Freeway - on a regular basis around both lakes, they are nonresidents but keep an eye on the wildlife and report any problems, their dogs are always kept under control, so thanks chaps!

The lake seems almost deserted at present, but our old, familiar feathered friends are beginning to reappear, and once the geese return, well its back to buckets of corn and wheat, can't wait!

Have a good summer.

Linda Jones

All photographs © Linda Jones, 1996. Used with kind permission.

Incident on Watermead Lower Lake

Readers who witnessed an incident on the western shore of the Lower Lake on Sunday 9th June 1996, at approx. 1345, and on the Spine Road, at 1400, each involving an attack on a Director of Lakeside Land, are asked to contact a member of the Board or Aylesbury Police on (01296) 396000.

A number of youths, not from Watermead, were arrested by police for Violent Disorder following the incident. Police inquiries are continuing and criminal and civil proceedings are anticipated.

Lakeside AGM

Advance Notice to Shareholders

The 2nd Annual General Meeting of Lakeside Land Limited will take place at Watermead Village Hall on Thursday 12th December 1996, starting at 2000. Light refreshments will be provided.

LCAM

Lakeside's subsidiary company Lakeside Central Area Management Ltd, with its smart new swan logo designed by Watermead resident and professional graphic designer Rachel Baker, was incorporated on 3rd June and on 1st July assumed responsibility for administration of the entire central area including the car park (notice any dumped vehicles recently?). The 12 strong Board is chaired by Michael Shrimpton, with businesses and residents of the central area well represented. The advantage to the community is that the central area will be kept well-maintained after Royco's impending departure from the scene and Lakeside Land will receive an annual management fee, to be spent for the benefit of the community as a whole.

- New Pine
- Old Pine
- Giftware
- Framing
- Craftwork
- Bargain Priced Pictures

**183 Cambridge St.
Aylesbury**

(Near The Weavers Pub)

OPEN 7 DAYS INCLUDING
BANK HOLIDAYS

01296 399183



Quality Pine Furniture

QUALITY

Our new and reclaimed handwaxed ranges are solid pine throughout... beautiful furniture that's made to last.

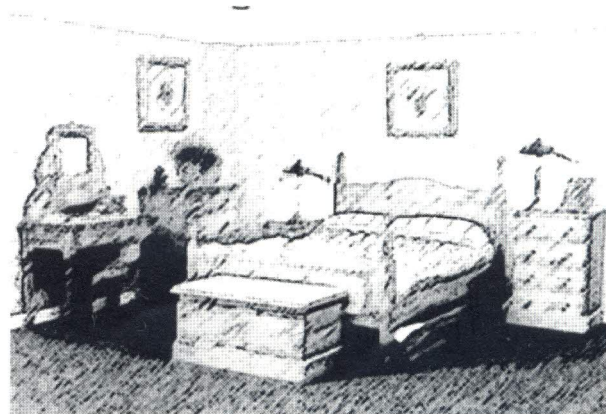
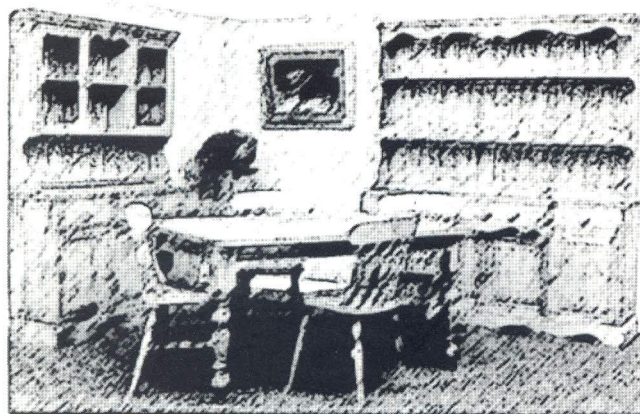
SERVICE

Free delivery to Watermead

"Made to measure" option

Credit schemes available

(Subject to status, written details on request)



VALUE



Buckingham Range

Double Wardrobe.....£219.95

Five-drawer Chest.....£109.95

Three-drawer Bedside Cabinet.....£69.95



Neighbourhood Watch

The Thames Valley Police Crime Prevention van will be available in the car park by the Watermead Inn on:-

Sunday 21st July from 10am to 3pm.

The van will be manned by:-

PC Ian Richards —

Community Liaison Officer

PC Kevin Isaacs —

Area Beat Officer

Sandra and Mike Gowling —

Area coordinators

Please feel free to pop along at any time if there is anything you would like to discuss or if you would like to join the Neighbourhood Watch.

The next meeting of Neighbourhood Watch will be held on Monday 22nd July at 7.30 pm at:-

The Old Police Station

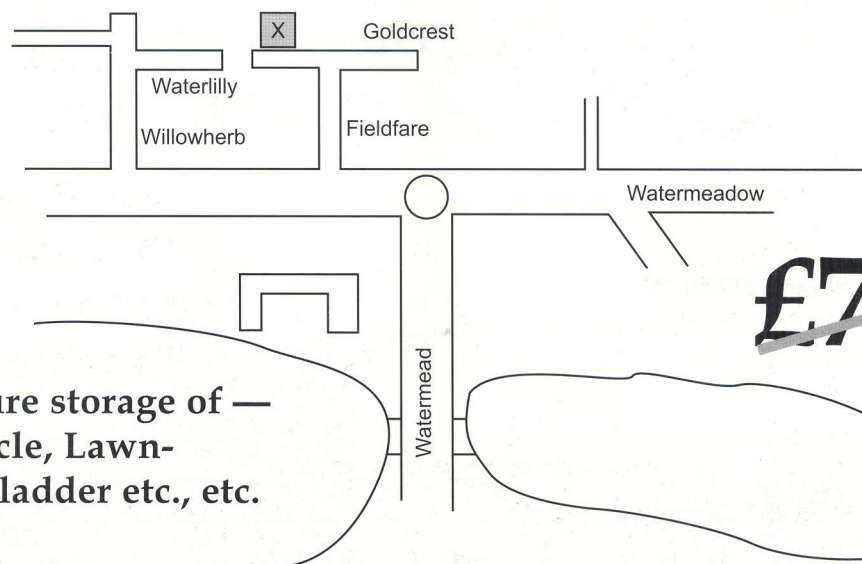
Walton Street

Aylesbury

This meeting is open to all the coordinators and any resident of Watermead. Neighbourhood Watch is run for the residents' benefit and it is vital that you let us know how you feel about the way it is run.

Please feel free to come along and let us know your opinions. Above all let us know if there is something you would like the Neighbourhood Watch to deal with on your behalf. If you would like directions or cannot attend but would like something included on the agenda, please ring Sandra or Mike Gowling on 20956.

Garage for Sale



**Ideal for secure storage of —
Car, Motorcycle, Lawn-
mower, Step-ladder etc., etc.**

Contact:

David O'Brien

Home: 01296 331264

Work: 01296 86255

£4995 or best offer.

Must be sold quickly.

'Boathouse' *Restaurant and Bar*

Due to open mid to late August

Set amidst award-winning Watermead and overlooking the large lake.

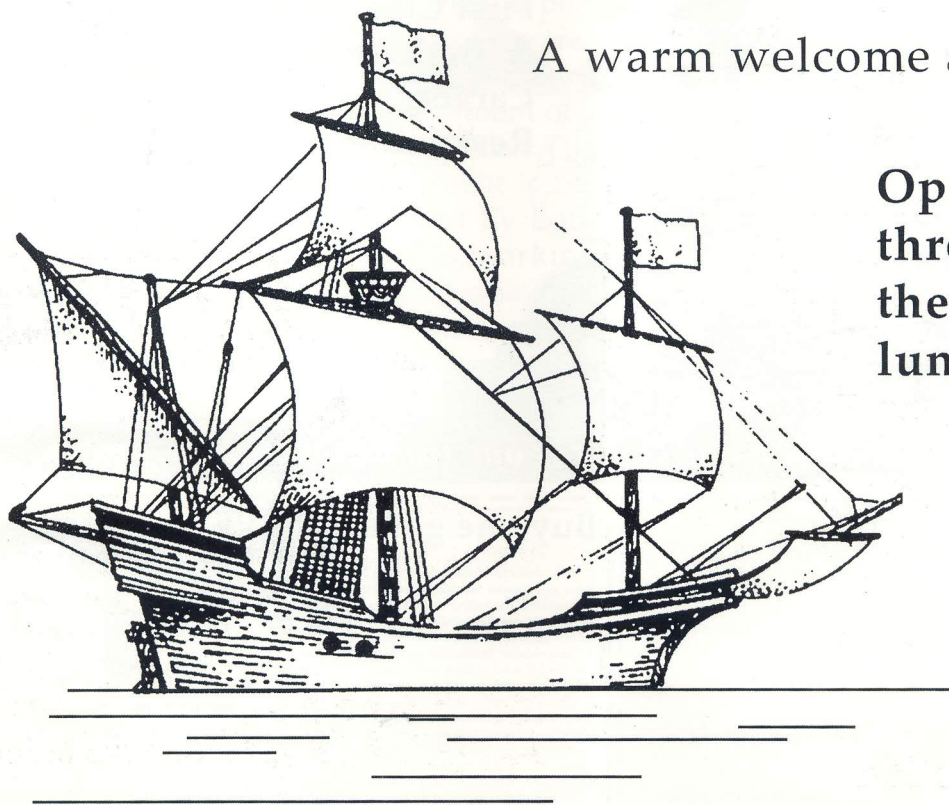
Choose to dine in the newly fitted-out traditional 'Galleon' style panelled dining room, or 'al fresco' on the wooden terrace overlooking the tranquil water.

Exciting menus — specialising in seafood and chargrilled steaks.

Opening mid to late August

A warm welcome awaits.

**Open daily
throughout
the year for
lunch and dinner.**





The Watermead Inn

BUY 1

SPECIAL 3 COURSE

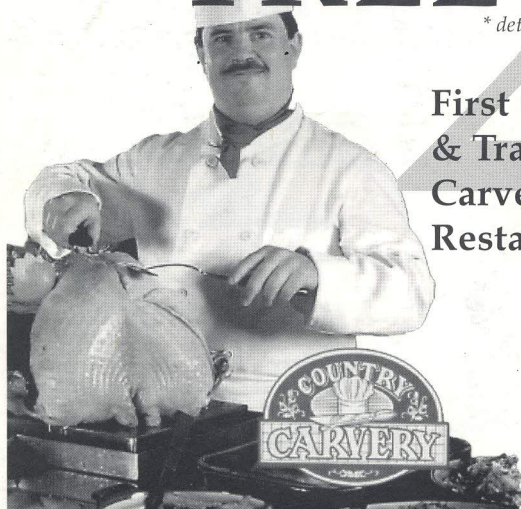
SET MEAL

FOR £10.49

AND GET A 2ND* FREE

* detach vouchers below

**First Class Pub
& Traditional
Carvery
Restaurant**



**Country
Carvery
Restaurant
OPEN 7 DAYS
A WEEK**

**Premier
Club
membership**

**Restaurant
open
all day
Sundays**

**Childrens menu
available**

**Phone
01296 433123
for table
reservation**

**Full bar snack
menu!
All day
Every Day**

**Diamond Circle
Meal
Deals**



**Vegetarians
catered for**

**Parties!
Weddings!
Anniversaries!**

Good Food and Drink is our Tradition

Buy one get one FREE — July

1. Offer valid lunchtimes & evenings Mondays to Fridays, and Sturday lunchtimes from 1st July to 31st July 1996.
2. This voucher is valid in the restaurant only and must be presented at the time of ordering.
3. This voucher entitles you, when you buy a special set 3 course meal of soup, roast and apple caramel apple pie, to another special set 3 course meal free of charge.
4. This offer cannot be used in conjunction with any other cheques, vouchers, promotional meals, Diamond Circle card, discount cards or special meal deals.
5. This offer may not be redeemed wholly or partly for cash.
6. Offer not available to staff of Scottish & Newcastle Retail or their families.
7. This offer is only valid when name and address details are completed.
8. Please tick this box if you do not wish to receive any other information or offers. ☐

Title Mr./Mrs./Ms. Initials
Surname
Address
.....
Postcode
For office use only
Server Name & Initials
Bill N°
Bill Value
Discount Value
Date of Redemption
Method of Payment

Buy one get one FREE — August

1. Offer valid lunchtimes & evenings Mondays to Fridays, and Sturday lunchtimes from 1st August to 31st August 1996, (excluding Bank Holidays).
2. This voucher is valid in the restaurant only and must be presented at the time of ordering.
3. This voucher entitles you, when you buy a special set 3 course meal of soup, roast and apple caramel apple pie, to another special set 3 course meal free of charge.
4. This offer cannot be used in conjunction with any other cheques, vouchers, promotional meals, Diamond Circle card, discount cards or special meal deals.
5. This offer may not be redeemed wholly or partly for cash.
6. Offer not available to staff of Scottish & Newcastle Retail or their families.
7. This offer is only valid when name and address details are completed.
8. Please tick this box if you do not wish to receive any other information or offers. ☐

Title Mr./Mrs./Ms. Initials
Surname
Address
.....
Postcode
For office use only
Server Name & Initials
Bill N°
Bill Value
Discount Value
Date of Redemption
Method of Payment