

PARISH COUNCIL FOR WATERMEAD?

On this occasion I am going to write about the events leading up to the public meeting held on 28 May 1998 to vote on whether or not residents of Watermead would like to have their own parish council and what happened next!

AVDC is currently conducting a Parish Review and in February this year the Chartered Trustees of Aylesbury wrote to Michael Shrimpton as an initial contact within the community of Watermead to see if there would be interest in setting up a parish council here. As you may be aware Michael has been leading a bid to keep Rolls Royce British and was not readily available during the first few months of the year. When contact was eventually made he gave them my name to deal with the matter. It was now April and time was running short!

An initial meeting was arranged and, after a number of phone calls to various members of the community, Anne King agreed to accompany me. We met with Mary Baldwin, County Councillor, and Rosemary Hick, Mayor of Aylesbury at the time, who explained that Aylesbury were applying for Town Council status. Most of Watermead comes under the parish of Aylesbury.

We were told that a Watermead Parish Council would consist of 9-11 elected councillors and advantages would be:

- Able to set a local rate (ie parish tax) which is part of council tax. We currently pay a precept to Aylesbury parish council (which pays for bus shelters, cleaning of monuments, cutting grass verges, etc).

- Able to decide what we want to spend the money on for the next year eg lighting, maintenance of playing fields, providing park benches, grass cutting, playground. This will require planning and monitoring of budgets.

- Able to appoint a parish clerk who would deal with all administrative matters and who would be remunerated.

As a right the parish council would see all planning applications in the area and be able to comment on them (even someone putting up a conservatory). Councillors would be able to attend district planning meetings and make comments, Able to comment on all local matters,

The only disadvantage that could be seen is that we would lose out on being able to apply to the Hardings Charity. The setting up of a parish council would not affect catchment areas for schools and we were told that it is unlikely that a primary school would be built for Watermead.

At the meeting Anne and I were shown maps and literature that had been circulated to the residents of Aylesbury Town. We were told that if we wanted to go ahead we had to consult with all residents of Watermead before 15 June 1998 by which time an application had to be made to AVDC. Other than general advice we would be provided with no funds or other assistance.

So we left feeling under a burden. To my astonishment Anne came round to my house two hours after we had returned to Watermead with a draft circular.

I phoned various people and set up a committee of seven people. We met a few days later at my house to discuss what we should do. The circular was amended slightly and we arranged for 1,200 photocopies to be done. Lakeside Land agreed to pay for this. We took advantage of distributing them with Village View which had been somewhat delayed. We were under some time constraint as we had to arrange a public meeting and the only date the village hall was available was 28 May. The distribution manager of the Village View was on holiday and my thanks go out to all those who helped (some at short notice) with the distribution of both Village View and the parish review circular.

The public meeting chaired by Graham Severn was deemed a success by attending dignitaries who were Mary Baldwin, Greta Littlewood and Raj Khan. About 40 Watermead residents attended and unanimously voted to go ahead with applying for a parish council for Watermead. The circulars had a tear off voting slip for those people who were unable to attend the meeting and collection boxes were left in the shops in the Piazza. Almost 100 people responded - 94 in favour, 4 not in favour and 1 was returned incomplete.

As mentioned earlier there are some properties on Watermead that lie within neighbouring parish boundaries. Six houses in Kestrel Way (which at the time of writing are still under construction) lie within Berton parish. Land and buildings on the other side of the River Thame, ie Captains Cabin, Harpers and the hotel, lie within Weedon parish. I have written to the Parish Clerks in Berton and Weedon and they have indicated that they would be in agreement with moving their boundaries so that Watermead will be complete.

I have written to the Head of Administration at AVDC with the results of our consultation and public meeting and the letter has been acknowledged. All we have to do now is wait. A decision is not likely before the year 2000.

In 1996 the population of Watermead was 2,500 with an electorate of 1,673; it has obviously grown since then. This is larger than Berton who have their own parish council and are therefore able to run their own affairs. Let's hope that we will be able to run our own affairs soon.

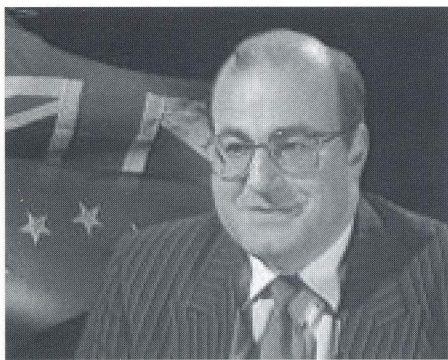
Mary Singleton

**Village View
on the
Internet**



Web Address to be Advised

Editorial Mailbox -
jasonbray@hotmail.com



Michael Shrimpton appearing on BBC Newsnight
(By kind permission of the BBC)

I was saddened to hear of the loss of Ken Hirons, who was a popular member of the community and always willing to lend a hand. He was one of those who made the difference between a community and a collection of houses.

With the great battle for Rolls-Royce sadly won by our community partners the Germans I am now able to devote more time to Watermead. LCAM is very much back on its feet and invitations to tender have now been issued for the exterior painting contract - this will be the first time we have supervised the painting. The safety plan and contract specifications have been drawn up, the contract supervising officer and site director appointed and the contract will be awarded early in September. The next job will be the fountain, on which we plan to spend several thousands of pounds over the next few months.

Well done to Michael Long, who supervised the contract for refurbishment of the bandstand on the lower lake. We have now authorised security patrols, given the degree of vandalism. If you see people damaging the bandstand, attacking the wildlife or committing any other form of vandalism please tell both the police and a director of Lakeside Land. It is only by taking a proactive approach that we can defeat vandalism - it was rather discouraging to hear people arguing that we should leave the fountain in its damaged state because it would only be wrecked again.

The parish council initiative continues to be pursued and it looks increasingly likely that Watermead will be a parish from about 2000/1. The Lakeside Board would welcome that, indeed one its directors, Mary Singleton, took the

CHAIRMAN'S VIEW

initiative in setting up the public meeting which voted in favour of the proposal.

I know that the View is read by many new residents, particularly in the new houses in Kestrel Way. Welcome to our unique lakeside community! Without turning the View into a prospectus, I have been asked to explain to new residents why we have a company and a Board of Directors, rather than a residents committee. The answer is that unlike many residents committees we own and manage a large landholding - some 35 acres in all - for the benefit of the community. The company was formed in November 1994 in response to a planned large nightclub development by the lake. We successfully negotiated an option over the land and raised the capital from local residents to buy it, beating the completion deadline by a matter of hours. The company has been able to exploit the reservoir of professional and managerial talent on Watermead and has thrived. Its authorised share capital is £50,000 and the balance sheet currently looks healthy. New residents interested in learning more about the company and its activities are welcome to speak to one of the directors, whose contact details are given in every issue (that is not an invitation to subscribe in the company). More volunteers for the Board would be greatly welcomed.

There has been some suggestion that we should have a fireworks night to see in the millennium, preferably not computer-controlled fireworks confusing 2000 with 1900, the Year Zero or last Wednesday. Whilst the VE Day event in 1995 went well (yes the print on display in Waterlilies depicts a real event), we have had a mixed history with fireworks, with the last event losing heavily thanks to adverse weather conditions and a woeful lack of volunteers. Feedback would be welcome - planning would have to start now if an event were to stand any chance of success. We could always have a 'millennial disco' I

suppose, with a computer-controlled turntable designed to crash at the end of the evening, but I am not convinced. The last marquee event (staged by those very nice people at Captain's Cabin) was poorly attended, but a marquee dinner could be a possibility - or it may be that everyone is planning to go to the Chatham Islands or the Dome or wherever.

Speaking of Waterlilies I warmly commend this splendid new enterprise - they have built up an excellent display and their shop (in the Piazza) is well worth a visit.

If you envy the intrepid balloonists floating away into the late evening sky and fancy a flight ask one of the directors - all the balloons flying from Watermead are owned or operated by Lakeside shareholders and we are very happy to put you in touch. It's great fun and we are delighted to encourage the development of Watermead as a major ballooning centre.

Learn to Play Bridge!

Courses Start in September
in Aylesbury.

Phone **LISA** at the English
Bridge Union:

01296 394414

Bridge for All the complete
Learn and Play Programme
from the National
Organisation for the game

HAVE YOU GOT A COUPLE OF HOURS A MONTH TO SPARE?

The Board of Lakeside Land are anxious to find a Minutes Secretary to take the Minutes of the monthly Board Meeting, held on the second Thursday in the month at 8 pm in the Village Hall. Duties also include typing and distribution of the Minutes to Board members.

This is a 'voluntary' post. Benefits include keeping up to date with what's going on in Watermead and social activities!

Sue Blood served the Board as Minutes Secretary from the start of Lakeside Land and has now moved from Watermead. She did a marvellous job and we shall really miss her!
Please contact any member of the board.

Taking Care of OUR Community

Vandalism

Many people have made comments to the board regarding the present state of the Fountain in the village plaza and other areas of damage around Watermead. Although the board commit every endeavour to ensure that Watermead is maintained to the highest standard, vandalism stills remains a scourge on our village. In fact most of the damage to the Fountain was done by children of Watermead residents.

the board would like to appeal to residents to keep a constant eye out for vandals and hesitate no time in contacting any member of the board to report such going ons.

Dog Owners

The same could also be said for the discourteous and ill mannered dog owners who still refuse to clean up the mess caused by their pets. They have no regard for other people and especially children who play around the lake. It has come to the point where you have to spend more time watching where your walking around the lake than admiring Watermead's individual beauty. The board realise many of the offenders are not even Watermead residents

This is your village! Please take care of it.
From a personal prospective I myself would waste no time in reporting these people and making sure they pay the fine! Ed.



PUBLICATION DATES 1998

Spring - 30th April

Summer - 25th July

Autumn - 3rd October

Christmas - 12th December

ADVERTISEMENT RATES

Residents

1/4 Page - £15

1/2 Page - £30

Full Page - £60

Non Residents/Commercial

1/2 Page - £30

1/2 Page - £60

Full Page - £120

Please arrange advertisements at least
3 weeks prior to publication date

If you have any suggestions for content/articles
please contact any member of the editorial board

O P E N E V E R Y D A Y

MANY PRODUCTS CHEAPER THAN SUPERSTORES

CANS

Heineken	8 for £5	Tennents Super 500ml	4 for £4.36
Hofmeister	8 for £5	Skol Super 500ml	4 for £4
Stella 500ml	4 for £3.56	Boddington	6 for £5

BOTTLES

Labatt Ice	6 for £5	Becks	6 for £5
Stella	6 for £5	San Miguel	6 for £5

WINES

Jacobs Creek Semillon Chardonnay	£4.49
French Merlot	£3.49
French Cabernet Sauvignon	£3.49
Liebfraumilch	£2.49
California Red/White	£3.49
Lindemans Chardonnay Bin65	£4.49

Open: Mon-Thurs 3pm - 10:15pm
Fri-Sat 12 Noon - 10:30pm, Sun 12 Noon - 10pm

MAK *Wines*

158 Buckingham Road (Opposite Dutton Forshaw) Tel: (01296) 436705

Rolls-Royce Battle

The fight to save Rolls-Royce really started on Watermead, when Lakeside Land chairman Michael Shrimpton conceived the idea of a customer buy-out. He founded the Rolls-Royce Action Committee in January and Crewe Motors Limited in March. The idea was to bring the wealthiest echelon of R-R and Bentley owners into a consortium to challenge VW and BMW. The company's solicitors, Slaughter and May, put in a £460m indicative bid on 4th June but the Crewe team was defeated by Volkswagen, who in turn were humiliated by Rolls-Royce plc and BMW.

Many key meetings were held on Watermead itself and some interesting phone calls were

made from Watermead to Zurich, Munich, New York and all sorts of places. Watermead featured on television both here and in Europe and Michael's Bentley Turbo was often to be seen with a camera team in tow.

The most recent feature, with the lake as a background, was the lead business story for the New York Times on August 7th. Watermead was admired by all who came to see it.

The story is not quite over, as VW's troubled stewardship of Rolls-Royce continues to run into customer resistance. Michael has no plans to trade his Bentley in for a Volkswagen.

WM NEWSAGENTS MACE

Early Morning
Paper Delivery



Greeting Cards

OPEN ALL WEEK
6.30AM - 8PM

InstantTM

Dairy Produce

Milk
Butter
Cheese
Cream
Eggs

NEW VIDEO LIBRARY

Top 50 titles Including:

The Lost World
Absolute Power
Fifth Element
Speed 2
Quest
Beau
Men in Black
Murder at 1600
Dantes Peek

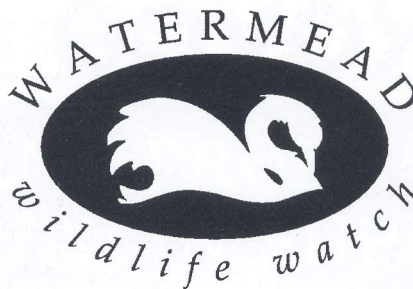
Confectionary & Soft Drinks

Groceries
Tinned Goods
Bread
Biscuits
Meats
Preserves

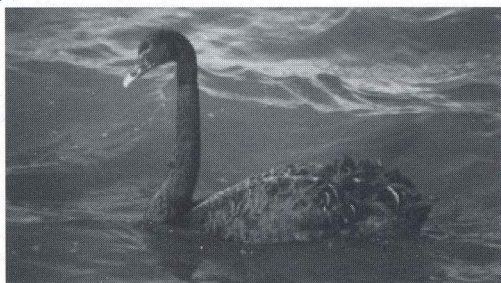
**Hire any 2 films
and take a 3rd free!**

Watermead Village Piazza
Tel (01296) 338435

A VERY RARE VISITOR!



Yes indeed Folks, for the very first time at Watermead we have the privilege of seeing a Black Swan, these are native to Australia and New Zealand, and would only normally be seen at wildlife parks or in private collections, where this beautiful creature came from is a mystery, he/she (both sexes look similar) arrived



A Very Rare Visitor!

12th October, and one week on, is still here, much to the annoyance of George and Henry, "Mystery" will not be moved! Although a Black Swan with red bill, only in flight can you see the true beauty of this creature with pure white Primaries (flight feathers) - quite spectacular, so hopefully Mystery will stay for a while. Well, back to our regulars, George and Lady did



"Keeping an Eye on Henry"

hatch out after their nest flooded and Henry and The Duchess re-sat, and also produced their cygnets one month later thus giving George the upper hand on the big lake, last year Henry kept George and his family well behind the barrier of the stepping stones, as we all remember, but now they are both on the big lake, it's a constant battle for territory, and woe betide the bird that crosses into the others zone, goodness knows what will happen then flying lessons start!

A lone Cormorant paid us a brief visit, he sat on the boat in the centre of the lake, hung his feathers out to dry for a couple of days, then departed. Squeak, the Fulvous Whistling Duck is still with us, although he disappears for a couple of days now and then, I think

he goes back to the canal for a mini break, maybe his partner is there, who knows? We had some very late arrivals on 3rd October, 14 ducklings, sadly most of them fell prey to nature, so fingers crossed the remainder make it. We had our share of ducklings this year, and as I've said before, Mallards are a promiscuous little bunch, certainly proved this year by the obvious differences on one batch, possible three different fathers, so we can't say we do not have a variety on the lakes.

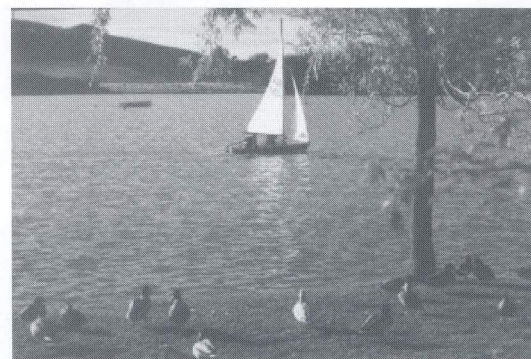


Mystery showing
"True Colours"

We've had quite a few Geese stopping off on their way South, a sure sign of winter approaching, as usual one seems to have missed take off, he has got a slight limp but it doesn't seem to hinder him. Talking of Winter, (sorry), I'll give the usual feeding tips, mixed corn, wheat, moist bread, and don't forget the garden birds, I saw a robin sitting in the garden yesterday, and it immediately brought Christmas that much closer. I'll leave you all with that thought!

Bye for now

Linda
Jones



Waiting for Their Ship To Come In?



QUALITY PINE FURNITURE

*New Pine * Old Pine * Giftware * Craftwork
* Bargain Priced Pictures

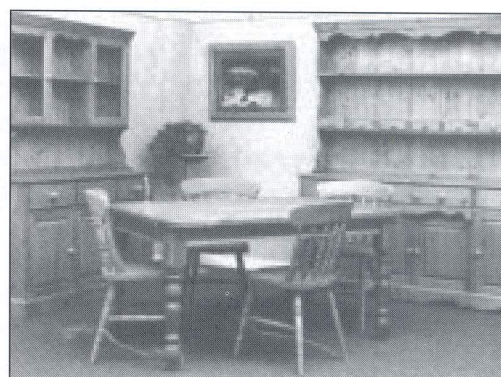
Quality - Our new and reclaimed handwaxed ranges are solid pine throughout...beautiful furniture that's made to last.

Service - Free Delivery to Watermead. "Made to measure" option.

183 Cambridge Street, Aylesbury
(Near Weavers Pub)

Open 7 Days - Including Bank Holidays

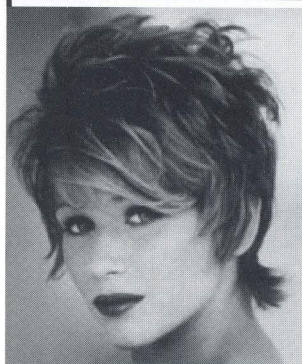
Tel: 01296 399183



Solid, Dove-Tailed Coppice Pine

Bedside Cabinet
Dressing Table
2+4 Chest

£49
£139
£199



*Why Should
you try us?*

Why are we

*different from
all the rest?*

Opening hours...

Monday - Thursday
9.15am - 9pm

Friday
9.00am - 7pm

Saturday
8.30am - 4pm

Telephone 01296 488138

AVANTI
HAIRDRESSING
AND THE
BEAUTY COMPANY

Watermead Village Piazza

"Winner of the Small Business Excellence" Award 1997

- We have friendly, professional hairdressing and beauty therapists to give you the best advice
- We do take time to listen to what you want and we care about our clients
- We only use and recommend luxury hair care and beauty products

Why not pay our salon a visit, let our team of top stylists and experienced beauty therapists, all trained to the highest standards, take care of your every hair and beauty need.

"Winner of the Small Business Excellence Award 1997"

"Discover us and Discover the Difference!"

£5 OFF

**Top to Toe
Luxury Beauty Treatment**

Valid 25-10-98 through 7-11-98

(Not Valid With Any Other Offer or Discount)

£5 OFF

**Cathodermie Facial
or
DECLEOR Facial**

Valid 25-10-98 through 7-11-98

(Not Valid With Any Other Offer or Discount)

What A Load Of Rubbish

The following article was submitted by one of Watermead's disgrunteled residents. It may fit a few chords!

*Rgds
Editor*

Why are neighbours whispering to each other? Why, rumour has it, are black sacks being smuggled into cars after dark? It is not pre-war Berlin. No one has had the Star of David chalked on his doorpost. No, its Watermead in 1998 and several houses have already had the dreaded orange sticker. It is said that after the green and the orange, there comes the red sticker, which will herald a summons and punishment before the magistrates.

What is this crime that is being perpetrated by the householders? Why is the putting out of 'Side Refuse'. That is rubbish left neatly in a sack alongside ones which lie in your bin. You are not allowed to have more rubbish than will go in your one-size-fits-all wheelie bin. Some zealous official has decided that in the interests of the

environment, each household must limit the rubbish each week to what will go in the bin.

The same slim non-capacious bin has been dished out to all 2, 3, 4 or 5 bedroomed houses alike. There is said to be a larger bin available but how does one get this? No one has actually seen one. Who decided that a two-person household was allowed the same amount of rubbish as a four-person household? What is the statutory authority for limiting the amount of rubbish that a citizen puts out? This article starts with a joke but there is a serious issue here. Where will green fanaticism end? Council officials must be reminded that they are there to serve the people - not the other way around.

If you want the official answers, ring 585858

District Nurse

Pat Cowell is our Health Visitor, responsible for the new babies in Watermead. Whilst her customers are under five, what she writes is about her concerns for their parents. It should make us all think more deeply about our neighbours and what we can do to build a stronger community.

In my work as a Health Visitor, I contact so many young mothers living at Watermead village and I am concerned about the lack of support and community spirit. I think that one of the reasons for this situation is the lack of community facilities like schools, church buildings and surgery and the very few clubs that exist. Also the young people moving to Watermead seem to come from afar and they leave behind their extended families.

Often the young couples are both working full-time until the baby arrives. They may have jobs in London, which does not help them integrate into the community. After the birth, there is a young mother, isolated from family and friends, with all the anxieties

and adjustments to motherhood to face. Minor worries about the baby, lack of sleep and a reduced income can combine with the frequently high expectations of motherhood, to create severe stress and even lead to post-natal depression. In a community with good support, there is more often a shoulder to cry on or someone to rock the baby whilst mother relaxes for half an hour - that way stress does not escalate.

What I describe must be common to many new communities but Watermead seems to be taking longer to resolve these difficulties. This is something that I think Watermead residents need to think about and perhaps some new initiatives could be forthcoming.



VILLAGE VIEW BOARD MEMBERS

Jason Bray - Editor

Tel: (01296) 425094

Mobile: 0802 241247

Rachel Baker - Graphic Designer

Tel: (01296) 485101

Michael Long - Advertising Management

Tel: (01296) 336577

Mobile: 0860 285366

Solo Azwadi -Distribution Manager

Tel: (01296) 489384

WHY NOT HIRE THE VILLAGE HALL

ALL OCCASIONS CATERED FOR....

BUFFETS, LICENSED BAR,

LIVE MUSIC, DISCO,

TEA DANCE, MEETINGS....

WE WILL BE HAPPY TO DISCUSS

ANY REQUIREMENTS YOU

MAY HAVE

*Discounts for
Watermead Residents*

*For Hall bookings at
excellent rates, call:
Dot Toler (01296) 432405*



The Village Square

Watermead

Aylesbury

HP19 3FX

Telephone: 01296 330700

Opening times

9am - 8pm Tues, Wed, Thurs

9am - 5pm Mon, Fri

10am - 1pm Sat

Lythan Davies B.D.S
Marierose F. O'Hagan B.D.S.

Dental Excellence in the centre of your Village

- NHS exempt groups between 10am - 4pm

- 7 Day emergency cover

- Very competitive rates

New residents to
Watermead are warmly
welcomed. Visit us for
your next check-up; we're
right on your doorstep

What's On at the Watermead Village Hall

Watermead Cygnets Playgroup

Mon - Thurs 9:15am - 11:45am

Contact: Dot Toler (432405)

Judy Walsh School of Dancing

Weds 4:30 - 5pm (unders 5's)

5 - 5:45pm (5 - 8 yrs)

5:45-6:30pm (9yrs+)

Contact: Judy (482818)

Aylesbury Community Concert

Band

Weds 7:30pm - 9:30pm

Contact: Carol (485552)

Paul (481909)

Watermead & Weedon Women's Institute

1st Thurs of the month

7:30pm - 9:30pm

Contact Suzanne (487954)

Mothers & Toddlers

Weds 2pm - 4pm

Fri 10am - 12noon

Contact: Lynn (437254)

Line Dancing

Mon 8:30pm - 10pm

Contact Judy (482818)

Chinese Physical Culture

(inc. Health Exercises)

Tues 7:30pm - 9:30pm

Contact Paul (01280 815282)

Belly Dancing

Mon 7pm - 8pm

Contact Steffi (482929)

Lakeside Land Works Update

My name is Gordon Bonnick and I have lived on Watermead since 1994. After my retirement in 1995 I joined the board of Lakeside Land and was asked to take on the role of Maintenance Director. I am often to be found walking around the estate checking for any areas that may require repair which come within the jurisdiction of your Lakeside Company

There has been some delays in achieving some of the improvements we wished to make due in some part to being able to allocate the all important funds. Recently we have been able to refurbish the bandstand which had become quite run down. The electrical transformer cupboard was the victim of vandalism (*Please see vandalism article - Ed.*) and we have recently repaired this ensuring safety, paramount when considering the number of children who may have ventured into this area. On the subject of vandalism, it is a constant task to keep the small gatekeepers house secure, indeed it has been suggested that if be demolished or bricked up permanently, what do you think? (*replies to the Lake side land board please*) The Board are always open to suggestions or ideas for improvement around the lake. Other successes are the long awaited path leading over the grass area in front of the Watermead Inn.

Those of you with dogs will no doubt be aware that the board invested in the purchase of "Pooh Bins". Up until recently I have been emptying these myself, however we have at last

been able to employ a satisfactory contractor to do the job, and we now past the initial teething problems regarding this.

Future plans include ensuring the the wooden walkway in front of the nursing home is non-slip. The temporary measures put in to combat the bad weather at the end of last year have now more or less outlived it's usefulness, although worked well in the short term. We also envisage regravelling the walkway around the small lake as this path has become very worn.

I hope this has given you some insight into what we have been doing, please feel free to contact me if you have any suggestions or concerns regarding the general maintenance of the area around the small lake. (the Board does not have control over the large lake)

Gordon Bonnick
Maintenance Director, Lakeside Land
Tel: 434062

Waterlilies Needlecraft & Gifts

Tel 01296 331313

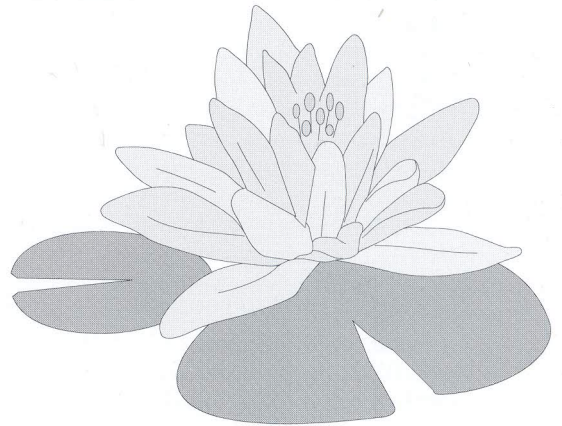
**1 The Piazza, Watermead, Aylesbury
(opposite The Watermead Inn)**

Waterlilies stock, well priced and imaginative gifts for all occasions as well as a growing range of locally crafted items, which we are happy to gift wrap, with our compliments !

We also have a wide range of needlecraft to suit both beginners and experienced stitchers of all ages.

**Please Join Us on Sunday 1st November
for a Glass of Bucks Fizz to Celebrate Our
1st Year on Watermead**

**Open Tues-Sat 9am-6pm.
Sun 10am-3.30pm
Open Everyday in
December Until Christmas**



St. James the Great, Bierton

It seems no time since we were worrying about the effects of the Sealed Knot and their Easter weekend re-enactment of the Battle of Aylesbury on our Services. As it happened, there were no problems, and Sunday Evensong was graced by a charming Cavalier and his lady in full regalia. Mind you, Easter Monday's Charity Organ Marathon was punctuated by a few heavy thumps, although no cannon balls actually struck the church! And here we are contemplating Autumn already.

Plans for our first social event are well advanced, and we shall have our third Barn dance in late September. They are a sell out every time, mainly because we have to restrict ticket numbers to give people room to dance in! It is Harvest Festival time as well, and on the 21st September the church will temporarily take on the appearance of a large fruit and veg. Market! A day or so later, a worthy organization will receive a large hamper of assorted fruit and other produce. Nothing will be wasted.

Congregations get a bit thin during August, and organists a bit scarce. We have only had one service with no organist, and it actually went very well. It's very much a case of "Well begun is half done". If you start too low or too high you can get into big trouble!

We open our Church for two hours every Saturday morning now, to allow visitors to have a quiet stroll round and a cup

of coffee, or perhaps just to have a quiet ten minutes in the Lady Chapel. This will continue until early October, so if you wondered what the inside of our Church is like, you are welcome to find out at leisure. We are often asked why we do not leave the church open all the time. "St. Blogg's never closes, you know". Well, St. Bloggs either has nothing worth stealing or breaking or their insurers are a lot more tolerant than ours. Sadly, theft and vandalism are facts of life these days and we have to react accordingly. This is also the reason why our priceless pre-Reformation paten (silver dish) is kept on display at Christ Church Cathedral, Oxford, rather than in Bierton.

Our next big celebration will be the ordination of Miss Christine Brewster, who has long associations with the village and the church, as teacher at the C of E School and as church organist. No one can remember if we have ever had our own ordinand before, but in any case we shall be welcoming Christine back as the Rev. Christine on 4th October.

For more information or a copy of our Church magazine, please ring me on 426743. To arrange a wedding or a baptism, please ring Rev. Peter Faulkner on 423920.

With God's blessing. Anne King.

Lakeside Land Ltd is the Watermead community company representing the interests and views of the Watermead community as a whole. To this end we have included the published mission statement below to underline that commitment.

LAKESIDE LAND LTD MISSION STATEMENT

It is the mission of Lakeside Land Ltd to:

- * Represent the interests of the whole village as Watermead's Community Company
- * Encourage positive development in keeping with the unique character of Watermead
- * Provide a forum for community involvement
and feedback
- * Support and encourage local enterprise
- * Protect and enhance Watermead's natural environment
- * Manage the company's assets efficiently and maximise revenue for the benefit of the community

NB: Nothing in the above shall conflict or take precedence over the Memorandum and Articles of Association of the company

L A K E S I D E L A N D B O A R D M E M B E R S

Chairman of the Board	Michael Shrimpton	7 Willow Herb	Tel: 01296 397963 Fax: 01296 393151 Chambers: 0171 797 7250 Fax: 0171 797 7299 Mobile: 0468 298559
Company Secretary	Len Staines	21 Waxwing Close	Tel: 01296 87954
Finance Director	Philip Toler	3 Chaffinch	Tel: 01296 432405 Work Tel: 01582 681204 Work Fax: 01582 681217
Commercial Director	Gary Poole	22 Ayleswater	Tel: 01296 432052 One-Call: 0171 310 1757
Director	Gordon Bonnick	30 Bramling	Tel: 01296 434062
Director	Michael Long	71 Whinchat	Tel: 01296 336577 Mobile: 0860 285366 Work: 01296 612979
Minutes Secretary	Susan Blood	3 Swan Close	Tel: 01296 482182
OTHER CONTACTS			
Village View	Jason Bray	9 Owl Close	Tel 01296 425094 Mobile: 0802 241247
Planning	TBA		
Watermead Community Forum	Mary Singleton	6 Redwing	Tel 01296 428569