

VILLAGE View

The Watermead Village Newsletter

Watermead Christmas Carol Concert



Saturday 19th December 1998
Venue - The Pizza
Time - From 6.00PM to 7.00PM



Live Music and Carol Singing
Mulled Wine and Mince Pies
Attendance by the Vicar of
Bierton



Farther Christmas Will
Find Time In His Busy
Schedule To Drop In
And Deliver Gifts To
The Children



Village View
on the
Internet



Web Address to be Advised

Editorial Mailbox -
jasonbray@hotmail.com



Michael Shrimpton appearing on BBC Newsnight
(By kind permission of the BBC)

I hope to see everybody at the Carol Concert in the Piazza on Saturday 19th at 6pm - this is our one community social event of the year. We shall again be welcoming the Vicar of Bierton, the Aylesbury Town Band and of course Father Christmas (and trying out our new portable speaker).

I read with interest the thoughtful piece by Pat Cowell, our Health Visitor, in the last View. She is right of course, but sadly there is nothing to be done about a church or school, which ought perhaps to have been included in the original concept. In fairness to Royco however it is doubtful that the estate was ever going to be big enough to support our own school or church, nor was there support from the relevant authorities. There is a surgery nearby in Elmhurst, (where I am registered), with footpath access, and I think it unlikely any new practice will ever be established on Watermead in its own right, although a case could be made for an 'out-surgery.' We have an excellent hairdresser, dentist and vet, but each will confirm they could not survive on Watermead's custom alone. Organising events is a thankless task - the turnout for the auction in November 1995 was abysmal, the fireworks nights were badly supported,

CHAIRMAN'S VIEW

only a handful of residents turned up to the Watermead Ball organised by Captain's Cabin and smaller social events in the village hall have not proved an attraction. The most successful event was VE-Day 95, but even that was undermanned. No resident has responded to the suggestion of a millennial fireworks night and I have had to release the slot to another event. No one has put forward an alternative event and the issue sadly is off the agenda.

The playground scheme fell through for lack of support, despite valiant efforts. The Board was prepared to make the land available and the favoured site (opposite the Watermead Inn on the western shore) will be reserved, as the scheme might be revived in the future. The Elmhurst playground however provides a cautionary tale and concerns were raised about abuse and vandalism.

The Piazza carpark (it is managed by LCAM) is not a playground, nor a ballpark, and I would respectfully ask parents to make sure their children do not abuse it. There have been a number of silly incidents - youths skating out in front of cars and so on. Damage has been done and if there is an accident no doubt the poor car-driver or the LCAM Board will be blamed. When the fountain was vandalised the parents of those involved (not all Watermead residents) refused

to pay and tried to blame LCAM, apparently on the basis that the fountain was not strong enough for their offspring to climb over. The replacement fountain has now arrived from Italy and the contractors will be going on site as soon as the weather permits. The LCAM Board has approved a two-phase complete refurbishment programme, accommodated within the existing level of service charge.

I was surprised to learn that the solicitor for a prospective purchaser had been misled by a Lakeside tenant (helping another tenant to lose a sale), apparently with a suggestion that no sinking fund was available for the painting contract. Not only was there no sinking fund when LCAM took over in July 1996 but residents had been under-billed for about £5,000 of work, which had already been carried out. That position has now been reversed and the LCAM Board has no plans to increase the service charge for 1999, which will remain roughly in line with 1995 charges when inflation and under-billing are taken into account. Partly due to the weather, which has caused problems for all tenderers, the work will not commence now until the early spring, barring exceptionally fine weather in January/February, although certain urgent work (e.g. on windowsills) has been brought forward on a weather-

permitting basis.

I am glad to say that the freehold has at long last been sold, to a Watermead based company, whose chairman has a seat on the LCAM Board. The two companies have established a good working relationship, for the benefit of all concerned except vandals and those breaching the entirely sensible regulations, which are there to ensure the safe enjoyment of this distinctive and attractive multi-million pound facility. Well done to Gordon Bonnick for supervising the 1.8k contract on the path at the southern end of the lake, which needed complete renewal. Only superficial damage appears to have been done by the subsequent flooding, which saw Watermead's well thought out

flood defences cope well with unusually high volumes of water and a Red Alert on the River Thames. Non-essential areas (like the fitness centre car park) are designated overspill areas, and the main run-offs were not even used. They have huge capacity and would take floodwater away from residential areas. Most of northern Aylesbury would be under water before Watermead. Although flood-prevention is primarily an Environment Agency (ex-NRA) responsibility landowners are under an obligation to make sure that flood defences are not obstructed. We called in the NRA two years ago for a walk-round inspection and briefing and the Directors make regular checks. Our objection to the Deposit Draft of the town plan is in and

we will be making a full submission to the Planning Inquiry. The good news is that we have our strategic gap between Watermead and Bierton (they are also relieved) and the northern by-pass is now a dotted line on a map about as likely to happen as the re-opening and electrification of the Aylesbury-Cheddington line and the introduction of direct Aylesbury-Glasgow expresses with a proper restaurant car or the re-introduction of Pullman dining cars on the Chiltern line (i.e. not very likely).

The Happiest of Christmases and the Merriest of New Years to you all.

Michael Shrimpton,
Chairman,
Lakeside Land Ltd

Learn to Play Bridge!

Courses Start in September
in Aylesbury.

Phone **LISA** at the English
Bridge Union:

01296 394414

Bridge for All the complete
Learn and Play Programme
from the National
Organisation for the game



PUBLICATION DATES 1998

Spring - 30th April
Summer - 25th July
Autumn - 3rd October
Christmas - 12th December

ADVERTISEMENT RATES

Residents

1/4 Page - £15
1/2 Page - £30
Full Page - £60

Non Residents/Commercial

1/2 Page - £30
1/2 Page - £60
Full Page - £120

Please arrange advertisements at least
3 weeks prior to publication date

If you have any suggestions for content/articles
please contact any member of the editorial board

OPEN EVERYDAY FROM 12 NOON TO 10:30PM INCLUDING
CHRISTMAS DAY AND NEW YEARS DAY

MANY PRODUCTS CHEAPER THAN SUPERSTORES

CANS - 500ml

Heineken	8 for £5	Tennents Super 500ml	4 for £4.36
Hofmeister	8 for £5	Skol Super 500ml	4 for £4
Stella 500ml	4 for £3.56	Boddington	6 for £5
Kilkenny	4 for £4	Draught Guinness	4 for £4

BOTTLES - 330ml

Labatt Ice	6 for £5	Becks	6 for £5
Stella	6 for £5	San Miguel	6 for £5
Heineken Export	6 for £5	Kronenbourg 1664	6 for £5

WINES

Jacobs Creek Semillon Chardonnay	£4.49
French Merlot	£3.49
French Cabernet Sauvignon	£3.49
Liebfraumilch	£2.49
California Red/White	£3.49
Lindemans Chardonnay Bin65	£4.49

Open: Mon-Thurs 3pm - 10:15pm
Fri-Sat 12 Noon - 10:30pm, Sun 12 Noon - 10pm

MAK *Wines*

158 Buckingham Road (Opposite Dutton Forshaw) Tel: (01296) 436705

Watermead Cygnet Playgroup

Watermead Cygnets Playgroup was established in 1991 in the Village Hall and is run by a parent management committee. The group is a member of the pre-school Learning Alliance and draws on a learning approach to the early years. Children between the ages of 2.5 and 5 years play in a safe, secure and happy environment from Mondays to Thursdays- 9.15 a.m. to 11.45 a.m.

During the last two and a half years, the playgroup has been under my leadership. With a dedicated staff and encouraging parental support, we have been able to make great improvements to the quality of education for our little ones. We have sought to provide:

An effective early years curriculum in all six areas of learning (For the less initiated these are: Language & Literacy, Mathematics, Knowledge & Understanding of the World, Creative Development, Physical Development, and Personal & Social Development) using appropriate activities and a range of equipment and materials

Staff with the commitment (and a sense of humour) to encourage every child to achieve to their best of their abilities

Pre-school sessions of writing, mathematical and literacy skills

Sound development of children's self-esteem, independence, and care and consideration for others

A partnership between parent(s), children and staff.

Last year, the playgroup joined the recently formed Buckinghamshire Early Years Partnership (1 998-2001). This means that every four-year-old is eligible for 'free places' from the local authority two terms before their fifth birthday. This move also resulted in a visit from a very pleasant OFSTED inspector in July. We were indeed very confident that the final report would be of a high standard but it was 'icing on the cake' to see our achievements in black & white. The verdict was 'two to four years' - in official language this means: that the quality and standards of the educational provision provided by us are acceptable in promoting the desirable outcomes for the children's learning, and that the next visit is a long way off

Some excellent news arrived in the early part of last year in the form of a lottery grant of £750 spread over two years. We were indeed over-the-moon and we were able to purchase a range of educational equipment and materials. Due to the rising demand for places, we are now operating an admission policy-giving children living in Watermead first preference, subject to availability.

I would like to take this opportunity to thank the community for their support and wish you all;

A Peaceful Christmas and New Year

Dot Toler

Registered Charity No. 1032595

Christmastide at St. James the Great, Bierton



One effect of the increasing commercialism of Christmas is that for the world at large, 'Christmas' has been brought forward, and is practically over by 26th December. But the church jealously guards the weeks leading up to 25th December. We do not feel able to celebrate our Lord's birth without some preparation. So we have a month in which to think about the meaning of our Lord's coming, but do not yet celebrate it. In fact from Christmas Day, we shall be celebrating it virtually up to 2nd February, "Candlemas". Our Christmas tree will be come an Epiphany Tree on 5th January.

As usual, we offer you a warm welcome to any of our Christmas Services. Our first special event is the Family Service at 11am on Sunday 20th December, the central part of which is the Sunday school Nativity Play. Later that day, at 6pm we have our main Carol Service, a mixture of traditional and newer carols.

On Christmas Eve, there is a Crib Service at All Saints Church, Hulcott (about 2 miles the other side of Bierton). If you haven't seen this little church on the Green, it is worth a visit.

Still on Christmas Eve, but back at Bierton, we have our children's Christingle Service at 5pm. This was tried experimentally in 1996, and has already become a fixture in our Christmas calendar; come early for the best seats! As I said last year, the children love it and we find that what children are enjoying, adults invariably enjoy as well!

Our Midnight Service of Holy Communion starts at 1.30pm on Christmas Eve, and for a more informal 'all-age' Family Communion with carols, you could come along at 9am on Christmas Day. A little later on Christmas Day, at 1.1am, there is a Eucharist with Carols at All Saints Church, Hulcott.

If you miss the Bierton Carol Service on 20th, there is another one at 6pm on the 27th at All Saints Church, Hulcott. (There will be no service at St. James the Great on the 27th).

There are some other quieter services over Christmas to which you are welcome; please telephone if you are interested or if you would like directions to All Saints, Hulcott. You should also have received a Christmas card from the church giving details of all our services for the festive season. Please ring 426743 if you have not received one.

Your Parish

Watermead is in the Anglican (C of E) parish of St. James the Great, which is your church. We are here to serve you at all times. Drop in any Saturday morning between 10am and 12 noon for a coffee and a look at your church, to arrange a baptism or a wedding, or just for a few quiet minutes away from the hustle and bustle of life.

A Christmas message

If this has been a difficult year for you in any way, you may find comfort in joining one of our Christmas services, which not only celebrate a Birth, but also acknowledge sadness and in which you may find warmth, love, hope and even joy.

May Christmas bring peace and quiet happiness to you, whether you acknowledge any form of faith or none. A kind word and help with service times awaits anyone who rings either of the numbers below. May God bless you and your home.

Rev. Peter Fauikner, The Vicarage, Bierton. Tel 423920

Anne King, 6, Fieldfare, Watermead. Tel 426743



QUALITY PINE FURNITURE

*New Pine * Old Pine * Giftware * Craftwork
* Bargain Priced Pictures

Quality - Our new and reclaimed handwaxed ranges are solid pine throughout...beautiful furniture that's made to last.

Service - Free Delivery to Watermead. "Made to measure" option.

183 Cambridge Street, Aylesbury
(Near Weavers Pub)

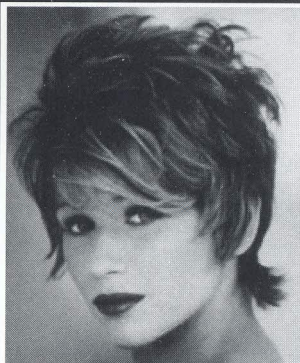
Open 7 Days - Including Bank Holidays

Tel: 01296 399183



Solid, Dove-Tailed Coppice Pine

Bedside Cabinet	£49
Dressing Table	£139
2+4 Chest	£199



We would like you to
accept these vouchers as
a way of saying...

*A Merry
Christmas and a
Happy New Year
to you all*

Opening hours...

Monday - Thursday
9.15am - 9pm

Friday
9am - 7pm

Saturday
8.30am - 4pm

If you cannot use these
vouchers yourself, please
pass them on to family
and friends.

Telephone 01296 488138

AVANTI

HAIRDRESSING
AND THE
BEAUTY COMPANY

Watermead Village Piazza

"Winner of the Small Business Excellence" Award 1997

And

"Retailer of the Year" Award 1998

£5 OFF
Cap Highlights
or DiaColour

AVANTI

Valid 1/1/99 - 13/2/99

Discount only applicable
when booked with a cut and
style or style.
Not valid with any other
offer or discount

£5 OFF

Guinot Super
Cathoderme

AVANTI

Valid 1/1/99 - 13/2/99

Not valid with any other
offer or discount

£10 OFF
Perming or Foils

Not applicable with partial
foils - perms or volumising

AVANTI

Valid 1/1/99 - 13/2/99

Discount only applicable
when booked with a cut and
style or style.
Not valid with any other
offer or discount

1/2 price

Pedicure

When you book for a deluxe
manicure (at normal price)

AVANTI

Valid 1/1/99 - 13/2/99

Not valid with any other
offer or discount

£5 OFF
Cut & Style
AVANTI

or
£2 Off

Kids Cut

Valid 1/1/99 - 12/2/99

Not valid with any other
offer or discount

£5 OFF
Aromatherapy
full body massage
includes facial

AVANTI

Valid 1/1/99 - 13/2/99

Not valid with any other
offer or discount

£5 OFF
Cut & Style
AVANTI

Valid 1/1/99 - 13/2/99

Not valid with any other
offer or discount

£5 OFF
Guinot
Cathodermie or
Decleor Facial

AVANTI

Valid 1/1/99 - 13/2/99

Not valid with any other
offer or discount

Computers, eh, who needs them?....

We can help you at **HOME** with:

- Upgrade or Repairs
- New and second user computer sales
- Year 2000 problems and concerns
- Software or hardware problems
- Training and guidance
- Independent consultation

COMPAQ

Dealer

Whatever the problem, the *final* answer comes from:

Guarantee

If we can't help you we will not charge you,
it's as simple as that



We can help you at the **OFFICE** with:

Network support, repairs and upgrades
Network consultation and installation
Computer upgrades and repairs
new and second hand computer sales
Low to High end servers
Year 2000 problems and evaluation
Software or hardware problems
Training and guidance
Truly independant advice

01296

437224

Alcom
Network Solutions



**The Board of Lakeside
Land Would Like to
Wish all Residents of
Watermead and Their
Families**

**A Very Merry Christmas
and A
Prosperous New Year**



**The Board Looks Forward to another
Year Supporting
Watermead's
Community and Our
Unique Village**



VILLAGE VIEW BOARD MEMBERS

Jason Bray - Editor

Tel: (01296) 425094

Mobile: 0802 241247

Rachel Baker - Graphic Designer

Tel: (01296) 485101

Michael Long - Advertising Management

Tel: (01296) 336577

Mobile: 0860 285366

Solo Azwadi -Distribution Manager

Tel: (01296) 489384

WHY NOT HIRE THE VILLAGE HALL

WE CAN CATER FOR:
CHILDRENS PARTIES, WEDDING
RECEPTIONS, DISCOS,
FAMILY OCCASIONS, GROUP
MEETING

WE WILL BE HAPPY TO DISCUSS
ANY REQUIREMENTS YOU
MAY HAVE

*Discounts for
Watermead Residents*

*For Hall bookings at
excellent rates, call:
Dot Toler (01296) 432405*



The Village Square
Watermead
Aylesbury
HP19 3FX

Telephone: 01296 330700

Opening times

9am - 8pm Tues, Wed, Thurs
9am - 5pm Mon, Fri
10am - 1pm Sat

Lythan Davies B.D.S
Marierose F. O'Hagan B.D.S.

Dental Excellence in the centre of your Village

- NHS exempt groups between 10am - 4pm
- 7 Day emergency cover
- Very competitive rates

New residents to
Watermead are warmly
welcomed. Visit us for
your next check-up; we're
right on your doorstep

What's On at the Watermead Village Hall

Watermead Cygnets Playgroup

Mon - Thurs 9:15am - 11:45am

Contact: Dot Toler (432405)

Judy Walsh School of Dancing

Weds 4:30 - 5pm (unders 5's)

5 - 5:45pm (5 - 8 yrs)

5:45-6:30pm (9yrs+)

Contact: Judy (482818)

Aylesbury Community Concert Band

Weds 7:30pm - 9:30pm

Contact: Carol (485552)

Paul (481909)

Watermead & Weedon Women's Institute

1st Thurs of the month

7:30pm - 9:30pm

Contact Suzanne (487954)

Mothers & Toddlers

Weds 2pm - 4pm

Fri 10am - 12noon

Contact: Lynn (437254)

Line Dancing

Mon 8:30pm - 10pm

Contact Judy (482818)

Chinese Physical Culture

(inc. Health Exercises)

Tues 7:30pm - 9:30pm

Contact Paul (01280 815282)

Belly Dancing

Tuesday 1pm - 2pm

Contact Steffi (482929)

WM NEWSAGENTS MACE

EARLY MORNING
PAPER DELIVERY



GREETING
CARDS

OPENING HOURS:

MON TO FRI 6.45AM - 8PM

SAT TO SUN 7AM - 8PM



Special Offer!

Take any film
Monday to
Thursday and
rent a second
film for free.

NEW VIDEO LIBRARY

Top 50 titles Including:

Great Expectations

Jackie Brown

Titanic

The Man In The Iron Mask

Mouse Hunt

Flubber

The Jackal

Sphere

... And Many More

Confectionary, Soft
Drinks, Groceries
and Dairy
products All In
Stock

Watermead Village Piazza
Tel (01296) 338435

Waterlilies Needlecraft & Gifts

Tel 01296 331313

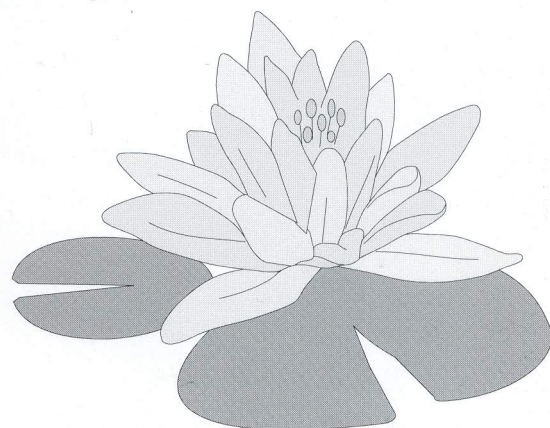
**1 The Piazza, Watermead, Aylesbury
(opposite The Watermead Inn)**

Waterlilies stock, well priced and imaginative gifts for all occasions as well as a growing range of locally crafted items, which we are happy to gift wrap, with our compliments !

We also have a wide range of needlecraft to suit both beginners and experienced stitchers of all ages.

**Waterlilies would like to take this
opportunity to wish all our customers a
very happy Christmas and New Year**

**Open Tues-Sat 9am-6pm.
Sun 10am-3.30pm
Open Everyday in
December Until Christmas**



WE'RE OFF TO THE MOSEL!



In October, the Aylesbury Community Concert Band toured the picturesque towns of Cochem and Bernkastel in the wine-producing Mosel region of Germany. It was the band's first trip abroad carrying the Aylesbury Duck flag. The ferry crossings, both outward and inward bound were, to say the least, a little on the rough-side ... we had to pick the worst weekend in October!! After umpteenth videos, rest-stops and a Cash & Carry, we arrived at our destination exhausted and glad to sleep horizontally.

Under the excellent leadership of Alan Mosford, the conductor, the band entertained our germanic eurofolk to a wide selection of music from Les Miserables, Beatles, Glen Miller, to Gustav Hoist. They

even managed a version of the Floral Dance sung by one of the players in German!

The best part of the tour was the wine-tasting and the beer-drinking (for some of us anyway!!). The accomodation was comfortable and warm, resulting in great frivolity and comradeship, thanks to the owner Herr Charles. We look forward to another tour, perhaps in the next year.

If you would like to know more about the band, catch them at the Carol Evening at the Piazza on Saturday the 19th December, or call at the Village Hall on a Wednesday evening. The band rehearse between 7.30 and 9.30 p.m.

Supporters Club
Dot Toler



Lakeside Land Ltd is the Watermead community company representing the interests and views of the Watermead community as a whole. To this end we have included the published mission statement below to underline that commitment.

LAKESIDE LAND LTD MISSION STATEMENT

It is the mission of Lakeside Land Ltd to:

- * Represent the interests of the whole village as Watermead's Community Company
- * Encourage positive development in keeping with the unique character of Watermead
- * Provide a forum for community involvement
and feedback
- * Support and encourage local enterprise
- * Protect and enhance Watermead's natural environment
- * Manage the company's assets efficiently and maximise revenue for the benefit of the community

NB: Nothing in the above shall conflict or take precedence over the Memorandum and Articles of Association of the company

L A K E S I D E L A N D B O A R D M E M B E R S

Chairman of the Board	Michael Shrimpton	7 Willow Herb	Tel: 01296 397963 Fax: 01296 393151 Chambers: 0171 797 7250 Fax: 0171 797 7299 Mobile: 0468 298559
Company Secretary	Len Staines	21 Waxwing Close	Tel: 01296 87954
Finance Director	Philip Toler	3 Chaffinch	Tel: 01296 432405 Work Tel: 01582 681204 Work Fax: 01582 681217
Commercial Director	Gary Poole	22 Ayleswater	Tel: 01296 432052 One-Call: 0171 310 1757
Director	Gordon Bonnick	30 Bramling	Tel: 01296 434062
Director	Michael Long	71 Whinchat	Tel: 01296 336577 Mobile: 0860 285366 Work: 01296 612979
Minutes Secretary	Susan Blood	3 Swan Close	Tel: 01296 482182
OTHER CONTACTS			
Village View	Jason Bray	9 Owl Close	Tel 01296 425094 Mobile: 0802 241247
Planning	TBA		
Watermead Community Forum	Mary Singleton	6 Redwing	Tel 01296 428569