



# Village View

THE WATERMEAD VILLAGE NEWSLETTER

Spring 2002

## A FUTURE FOR WATERMEAD

Most of us tend to look to a brighter future and for Watermead the next few months may well bring about some positive changes in that direction. Your Parish Council is now in discussion with Lakeside Land Ltd., over the possible transfer of land. But this is only the first step! Once the transfer is completed, plans are in place to develop practical amenities and push through a program to enhance the appearance of these surroundings.

There are, of course, some readers who have followed parts of this story for some time. Others new to Watermead, and neither shareholders of Lakeside Land, nor involved in some way with the work of the Parish Council may not be aware of any developments at all. But everyone needs to be equally well informed. What follows, therefore, is a brief review of events, past and present and their significance for everyone in Watermead.

(continued on page 2)



## TVR and Taxi in head on collision

On Thursday 28th February around 8am, a TVR and Toyota Taxi were involved in a head on collision. Although no comment can be made concerning the exact cause as the accident is still subject to a police enquiry, it would seem that the Taxi was on its way into Watermead via the spine road when, almost level with the Watermead Inn, the accident occurred. Damage was quite extensive to both vehicles with the bonnet of the TVR coming clean off. The accident was attended by 2 police cars and a police motor cycle. Luckily nobody was seriously injured in the accident.

Interestingly enough this is almost the exact site where the Parish Council is hoping to install a Zebra Crossing.

## Would you like to be Watermead's part time Parish Clerk?

Applications are invited for the post of Clerk to the Watermead Parish Council. Council meetings are on the third Thursday evening of each month.

The Clerk will prepare agendas for meetings of the Council and its committees, attend all meetings and prepare minutes for approval. The Clerk will also be responsible for keeping the financial records of the Council, dealing with correspondence, and ensuring that the legal and statutory aspects of running the Council are observed.

Hours of work are variable but normally average 60 hours per month. Hourly pay will be circa £6.50 depending on experience. Training will be given as required.

Computer and book keeping skills are essential.

Applicants should submit a typed CV and covering letter including referees, to arrive by 3rd May 2002 to Mary Singleton, 6 Redwing, Watermead, Aylesbury HP19 0WB. If you require further information please contact Mary directly.

**Are you proud of Watermead?  
If so, can you spare a few hours  
for the next 'Work-In' on  
Saturday 27th April?** (See page 9 for details)



### PLEASE SUPPORT OUR ADVERTISERS:

GOODS/SERVICES	PAGE	BUSINESS
Ballooning	8	Champagne Flights
Career	19	Career Change
Chinese Food	9	Lakeside Takeaway
Dentistry	12	Watermead Dental Centre
Education	6	Kumon Maths
	13	Hardwick Pre-School
Florist	13	Sue's Flowers
Gardening	15	Zillwood Garden Maintenance
Gym	14	Reflexions
Hairdressing	8	Avanti
Interior Design	7	Liz Judd
Needlecraft & Gifts	7	Waterlilies
Newsagent	17	WM Newsagents
Off-licence	16	Mak Wines
Pub & Restaurant	8	White Horse Inn
	20	Watermead Inn
Restaurant	18	The Riviéra
Services	19	Handyman Services
		Securelee Security Services
		Secretarial Service
Weddings	15	The Favour Vault
Windows	13	Samson Windows

Please tell our advertisers that you saw their advert in the Village View

# W A T E R M E A D

## Chairman's Brief

A big welcome to our two new councillors, Sue Severn and Sandra Gowling. I am sure they will make a useful contribution and I look forward to working with them. I was sorry to miss their first Council meeting (drinkies with the Estonian Ambassador).

The biggest event for this year will be the celebration of Her Majesty's Golden Jubilee. Your Council is putting a lot of effort into a variety of attractions, finishing with fireworks at 10.00pm. This will be a great national event: Elizabeth II is only the fifth British monarch after Henry III, Edward III, George III and Victoria to make the big fifty. We have every reason to be proud of our beloved monarch and I hope every road on Watermead will organise a street party.

To ensure the greatest success, we need all Watermead residents to play their part. We need volunteers and I hope you will be able to help, whether it is minding a stall for an hour or helping with car parking. Most importantly we want you all to come - put the date in your diary now - Monday 3rd June.

I am grateful to Len and Suzanne Staines, Dot and Phil Toler, Mary Singleton and everybody else who worked hard to make the Christmas Carol Concert a success. It was the best attended ever.

Parish Councils are getting more bureaucratic. Whilst there is a justified decline in public confidence in the integrity of central government, a new 'Code of Conduct' has been imposed on Parish Councils. I am not surprised my friend Christopher Booker slated it in his entirely non-political (just like mine!) column in the Sunday Telegraph. There's nothing in the Code on burying bad news on the day of Her Royal Highness Princess Margaret's funeral, buying Romanian steelworks or selling council policies on tobacco advertising. Perhaps these oversights will be corrected in the second edition. My message to Whitehall is - get off the backs of local government. If you want more power, take it back from Brussels. Since the Parish Council is obliged to adopt the Code of Conduct, its adoption was passed by an overwhelming majority at our January meeting.

I want to reassure Watermead residents that their Parish Council acts in their best interests and is looking to provide good facilities for all our residents. In addition we are seeking Best Practice recognition for the work we do, bringing us financial benefits to enlarge what we can do. If you want to find out more and contribute to the planning process, do come to the parish meeting on 18th April or the AGM in May.

As some of you may know your Chairman has had a busy year. Since the last issue I have

been to Los Angeles to talk about terrorism, with a former NATO Supreme Allied Commander, a Delta Force general, the Head of the Congressional Task Force on Terrorism and a former Head of the Counter-Terrorist Center at the CIA. I have an article on hemispheric security in the current issue of the Journal of International Security Affairs, have just had another article accepted for publication by Proceedings, the journal of the United States Naval Institute and have been invited to go up to Aberdeen to address students at their centre studying Terrorism.

As some readers will know (it's not a state secret) my legal work extends into some interesting fields (I well recall the reaction of one Director of Lakeside Land, who called in to drop off some papers and found my house in the middle of an electronic sweep, with the boys with black boxes doing their stuff!). As a result of that work, I got to know General Vernon Walters, former Deputy Director at CIA and United States Ambassador to the United Nations, who sadly has just died. He rang me on Watermead more than once. Some of you may have read his barbed obituary in the Daily Telegraph, none of the criticisms being deserved. Dick Walters was a fine man, a superb soldier, an outstanding intelligence officer, a great patriot and a good friend of this country. The world will be a poorer place without him.

*Mike Shrimpton - Chairman*

## A future for Watermead (continued from page 1)

Most people will know something about Lakeside Land. It was formed as a private company, some eight years ago, by residents of Watermead, as an instrument to buy up land on which a night club was due to be built. To prevent other unwanted development, it acquired the recreational land and the lower lake. This was not an investment, but a forceful demonstration by residents that they wished to safeguard the land for the good of the community. It turned out to be a most successful initiative, But Lakeside Land is not and never was a commercial company and it, therefore, always lacked the funds to do anything with that land.

Last year, our community did at last receive an important recognition, through the formation of the Parish Council for Watermead. The implications

are significant. Not only can the residents elect their representatives on the Council, but many opportunities now exist for them to take part in community activities. Do come to the Annual Parish Meeting, at 19:45hrs on Thursday, 18th April at the Village Hall, to hear the annual report. Through its precept the Parish Council is able to raise funds. In its first year, this amounted to some £ 24,000 and while the sum is not huge, it recurs annually, allowing the Council to look at the future with confidence. More encouragingly still, it is the policy thrust of Government towards more devolution and considerably more funding, albeit this is unlikely to materialise for sometime.

Unfortunately what your Parish Council does not have is land. And without land, the potential for creating a more practical and attractive environment will

remain limited, and we are all aware of the ongoing trespass and illegal fishing problems.

So, we have one organisation with land and very limited funds and the other with funds and no land. Fortunately, a great many shareholders of Lakeside Land are aware of the situation and several of them serving on the Parish Council support the transfer of assets from one to the other. Quite recently, this resulted in Village View becoming the official magazine of the Parish Council, But the outstanding and vital issue remaining for the future of Watermead is land. It is for this reason that, at one of its meetings, the Council took the decision to enter into negotiation with Lakeside Land for its acquisition. The obvious solution would be to buy that land, but Council funds were hardly meant to be spent that way. And then, of course how one would put a value on what is amenity land? As one

independent estate agent put it to the Council "our view is that the potential liabilities and any obligations there may be would probably equate to the land having a negative value". Another, more constructive course of action would be to indemnify some shareholders for the initiative they took, yea ago, to preserve the land for its residents. Here one would need to bear in mind that every pound spent in this way is one pound less spent on what matters most to people in the community, whether for amenities such as a children's playground, or the general upgrade of the whole area. In any event a majority of Lakeside Land shareholders seem to be keen for a straight transfer to the Council. These are some of the weighty decisions to be made, by all concerned with this particular negotiation, so that the Parish Council can proceed as quickly as possible with the strategic plans agreed last January, which are:

# P A R I S H N E W S

## Finance & General Purposes Committee

We have just completed our budgetary process for the coming year (2002/2003) which starts in April. The key element of the process is to ensure that we create a budget that will fund our operational and strategic plans for next year. This is then collected as a 'precept' within the community charge levied against each household.

Our total precepts for the financial year 2002/3 has been set at £30,060, which is an increase of about 21.5% from last year's budget of £24,700. We inherited this figure from AVDC, who set it on our behalf as the Parish only came into existence during the current fiscal year.

You may think this increase is too large, but it only works out around £5 per household. In fact, it is comparatively low compared to similar sized Parishes. One of the benefits of a Parish Council is our access to district, county and central government funding and grants and we are continuing to investigate opportunities for extra funding to support our strategic activities. We expect the outcome to be very positive to our balance sheet! An exciting long term initiative that could have a good impact on the finances at our disposal is the attainment of Quality Council status.

This could effectively double the monies collected through our precept by grants and awards from government bodies.

It is good to know that next year's budget supports a number of key initiatives. We listed these in the strategic plan in our last issue. All the initiatives planned should have a positive impact to the community in which we live. They include:

- New children's playground
- Maintaining and improving the amenity land and the facilities provided on it.
- Royal Jubilee extravaganza
- Large parish information/notice board.
- Parish Plan for the future

When we look to the current year 2001/2002, I am pleased to say we are in line with budget, in some cases even in surplus, allowing us to fund certain aspects of next year's operational plan from this year funding. A large sum from the 'projects and initiatives' fund that we inherited from the AVDC budget is earmarked for land maintenance based on a successful conclusion of negotiations with Lakeside Land for the transfer of ownership of land.

Before the start of the financial year, I hope to have more details as to the precise budget we can place against maintenance for the lake and surrounding land and will report on these in the next issue.

Jason Bray - Vice Chairman

## Planning Matters

Things have been very quiet on the planning front over the winter. Nobody wants work done on his or her house during the bad weather, which is understandable.

However on the wider front of planning in Aylesbury district as a whole, things look like changing considerably in the near future.

The Weedon Hill project, which is awaiting the final report, could mean 850 new houses, shops and a school to be built very near to us on the other side of the A413 road. This will inevitably cause more traffic congestion on all local roads, which are already some of the worst maintained in the country.

Also proposed and probably inevitable is the 3000 house estate at Berryfields to the northwest of the town, on the right-hand side of the A41 as one goes towards Bicester. This estate will have a major road linking the A41 with the A413, another cause of future traffic problems. The Parish Council is considering its position on this matter but we are of course very concerned on its implications to Watermead.

There are further proposals in the pipeline, which will, in the next 15 years, enlarge Aylesbury by up to another 2900 new homes. This in addition to those listed above.

***Bucks County council will be sending out a questionnaire to all households asking for opinions on four options, all of which will mean a lot more building in and around Aylesbury. I urge you to respond to this questionnaire and also to pester your MP, if you don't like what is proposed for our town. To paraphrase the words of an ancient philosopher 'in order for evil to succeed, it only requires good men (and women) to do nothing'. So make sure you have your say!***

Incidentally, for those who are interested in history, the Weedon Hill development includes the site of the Battle of Aylesbury, a battle fought during the Civil War. Many skeletons and artefacts from the battle have been found on this site over the years.

Ron Pordage - Chairman of Planning Committee

- The development of a new young Children's Playground
- Wholesale upgrade and maintenance work to the paths and adjoining land
- Investigate mechanisms to better police the land against trespass and illegal fishing.
- Possible barriers to prevent 'Traveller' incursions.
- The establishment of the land around the lake as an official public amenity
- Possible refurbishment of the cricket pitch and application for lottery funds to establish a sporting facility on the land.
- Installation of large parish notice board, detailing Parish and community events, a map of Watermead, and map of the walks around the lakes.
- Repair and upgrade of lighting around paths

Editorial Board

## Social Committee

As usual the Christmas Carol Concert was well attended and deemed a success. There was some criticism that we didn't make more of the fact that this was the first Watermead Parish Council event and comments received were noted for next time. We always appreciate constructive criticism and suggestions for improvement. The Carol Concert will be repeated this year in the Piazza at 6 pm on Saturday 21 December 2002.

Sadly, Victor, our Parish Council Clerk has resigned. He is planning to go and live in Italy in the short term and will leave us on 30 June 2002. He has put a number of systems in place to keep us all in order and has been a great support to all the Parish Councillors. We are grateful for his help in setting ourselves up as a Parish Council. So we are now advertising for a replacement and I look forward to receiving a flood of applications!

Dot Toler and Marcia Lang are making great headway in organising a fun day for Watermead on Monday 3 June to celebrate the Queen's Golden Jubilee. We look forward to receiving your plans for lunchtime street parties. There are several already planned so call Dot, Marcia or me if you want to arrange one for your street/area or if you would just like to join one. You will find details on pages 10 & 11 in this newsletter.

Finally, I have news that our request for a zebra crossing is being considered by the Aylesbury Vale Highways Committee and that a pedestrian refuge for the spine road has already been approved. More news on this in the next issue after I have attended their next quarterly meeting in April.

It would be nice to see more of you at our monthly Parish Council Meetings which are held on the third Thursday of each month in the Village Hall. You have an opportunity to air your views at 7.45 pm prior to the start of the meetings at 8 pm. See you there.

Mary Singleton - Chairman Social Committee

# P A R I S H

Whitchurch & Creslow Community Association

## Whitchurch May Feast Monday 6 May 2002

Wondering what to do on Bank Holiday Monday, then why not go to the Whitchurch May Feast?

The origins of the Feast go back to the 13th Century, when the then Lord of the Manor was granted rights to hold an annual Fair or Feast. The tradition ceased in the late 19th Century, but fortunately, it was re-introduced in 1979.

As is customary, the event will start with the Grand Parade, which will leave the White Swan Public House at 11.00am and travel along the High Street before turning into White Horse Lane on route for Glebe Field where the May Queen will be crowned.

The theme this year is Children's Books, providing plenty of scope for those wishing to enter the Fancy Dress Competition. The programme will be packed with entertainment for all of the family and there will be a wide range of stalls, offering plenty of opportunities to spend your hard earned cash!

So, on Monday 6 May, make the short journey along the A413 and have an entertaining and enjoyable few hours in this beautiful Buckinghamshire village.



### VILLAGE VIEW MEMBERS

Jason Bray - Editor Tel: 0704 4069931

jasonbray@hotmail.com

Sandra Landy - Assistant Editor Tel: 337330

thelandys@hotmail.com

Rachel Baker - Graphic Designer Tel: 641046

rachel@baker52.freeserve.co.uk

Paul Wilson - Advertising Manager Tel: 488066

paulwilson@watermead.org.uk

Solo Awadzi - Distribution Manager Tel: 489384

or email to: villageview@watermead.org.uk

### PUBLICATION DATES

Summer - 15th June, Autumn - 14th September,  
Winter - 14th December

### ADVERTISING RATES

Residents	Non residents
1/4 page - £20	1/4 page - £35
1/2 page - £35	1/2 page - £70
full page - £70	full page - £140

Small Ads - maximum of 30 words - £5

*For bulk adverts or long term contracts, prices are open to negotiation.  
Set-up/artwork fees will also be charged.*

### DISTRIBUTED TO AROUND 1200 HOMES

*Please arrange advertisements at least 3 weeks prior to publication date and send to the Advertising Manager (see above). Publication dates are subject to change depending on local events at time of publication. If you have any suggestions for content/articles please contact any member above.*

## Letters to the Editor - "What's happening with the land?"

Sir,

*I note with some concern that no information has been disseminated to the parishioners of Watermead regarding the transfer of land from Lakeside Land Limited.*

*I am not a shareholder in the company but having talked to to one or two understand that at the AGM the members gave approval to the Board to enter into discussions with the Parish Council (and only the Parish Council) with a view to transferring the entire land holding of Lakeside Land Limited, either free of charge, or for a small sum.*

*I have now heard from people outside the village that there is discussion with Aylesbury Football Club regarding transferring some of the land to them for use as training grounds/sports facilities. I view this with a great deal of concern and would not personally wish to see football pitches, floodlighting etc. on Watermead, it is not appropriate.*

*It is about time that both Lakeside Land and the Parish Council let the community know what is happening. The original purpose of buying the*

*land was to maintain the very pleasant public areas of Watermead and to ensure that there was no further building. Surely the land being owned by the Parish Council is a good idea? It would mean that our Council Tax was put to good use and the amenities of Watermead protected.*

*Perhaps both Lakeside Land and the Parish Council should issue statements to inform the parishioners what the proposals actually are, and confirm the current state of negotiations.*

*Yours faithfully*

*Name and address provided.*

*Dear Editor,*

*We have heard on the grapevine that the shareholders are to be given a choice between realising some value for the sale of the land to the Parish Council, or transferring the land at zero value.*

*We would like to say that we both consider the idea of re-investing our shares with the Parish*

*Council as an ideal solution to the situation we have at present concerning the upkeep and management of Watermead as a whole.*

*If the shares are re-invested then any precept monies that the Parish Council have at their disposal can be used wholly for the good of Watermead's residents in order to enhance the area and provide future amenities therefore preserving Watermead's uniqueness and beauty.*

*Regards*

*Simon & Deborah Hatcliffe*

*P.S. We personally are opposed to the idea of a children's playground - very naff and would definitely encourage youths to hang around the area (note the frequently vandalised bus shelter).*

**If you have any views you wish to make about the land or any other matter please contact the Editor - Jason Bray  
01296 640156 jasonbray@hotmail.com**

# NOTICES

## Annual Parish Meeting

The first public Parish meeting will be held on Thursday 18th April 2002 at 7.45pm. The Chairman will report on our first year's activities and financial performance for the current year and plans for next year. Watermead residents - come and hear first hand about our plans for Watermead. Find out more, tell the councillors what you think, ask them questions.

## Annual General Meeting

Watermead Parish Council will hold its first Annual General Meeting on Thursday May 16th 2002, 8:00pm prompt. At this meeting the council will elect its Chairperson and Vice Chairperson for the coming year and report on its strategic plans for the coming year.

All parishioners in Watermead warmly encouraged to attend and questions to the Council will be welcomed.

*Please note that the Parish Council & AGM meetings are public meetings where all attendees are welcome. The Parish Council meets on the 3rd Thursday of every month at the Village Hall, The Piazza, Watermead. We would encourage parishioners to attend and contribute to the development of our community.*

## New councillors co-opted to Parish Council

After losing two members of the Parish Council, due to personal reasons, we'd like to welcome our latest members Sandra and Sue.



**SANDRA GOWLING** is 46 years old, married and has lived in Watermead for the last 12 years.

Her career has spanned over 30 years during which time she served with the Metropolitan Police and various government departments including Customs & Excise. Today she is currently working at a local bank.

Together with her husband (a retired Police Officer) she has always taken an active interest in local events and so in 1995 they formed the local Neighbourhood Watch.

**SUE SEVERN** and her husband have lived in Watermead for the last eight years. They both appreciate the atmosphere and amenities provided by the village and particularly enjoy walking round the lakes with their dog, Sally.

Sue works as a marketing consultant for a variety of businesses and although she travels a great deal she is always delighted to get back to Watermead. Her husband runs the local auction house in Aylesbury.



Sue said that she is delighted to have been co-opted on to the Parish Council and is committed to helping to retain and improve both the facilities and unique ambience of Watermead. She believes that the Parish Council should and will become the focus for the community. Its work must be communicated and parishioners encouraged both to attend Council Meetings and to take part in local activities, particularly the celebrations planned for the Queen's Golden Jubilee this year.

## Bucks Concessionary Travel Scheme

From April 2002, Bucks County Council are introducing a number of changes to the Concessionary Travel Scheme. A Lifetime Photocard will now be issued. Bus passes will be free for elderly and disabled people and will entitle you to half price travel for journeys starting and finishing in any district in Bucks except Milton Keynes. When applying you will need 2 recent passport sized photos, a completed application form and proof of eligibility. Travel Tokens and Rail Cards are also available. For a fuller explanation of the arrangements please ring Lesley Yates, The Customer Services Manager on (01296) 585655 or any of the banking hall staff on (01296) 585661. Issuing offices are 66 High Street, Aylesbury.

## Wildlife Project Volunteer for Buckinghamshire Community Action

Buckinghamshire Community Action are seeking a volunteer to help with the preparation of a rural projects handbook. The work would include research and contact with environmental and community organisations via the internet. Basic IT skills would be an advantage. The project will take place in January and will be based at their offices in Aylesbury. This opportunity would clearly suit those with an interest in wildlife and the countryside as well as those seeking to extend their office and IT skills. If you would like to learn more about the project then please contact Francis Gomme on (01296) 421036.

## Directory of Voluntary Organisations 2001

This valuable directory is available now from Kim Whitbread, Community Care Information Officer at Buckinghamshire Community Action. Priced £5, order yours now! Contact (01296) 421036

### PUBLIC NOTICE

#### LOCAL GOVERNMENT ACT 2000

Watermead Parish Council has adopted a Code of Conduct for its Councillors. The Code is available for inspection by appointment with the Clerk to the Council.

## INTERNET INITIATIVE

One of the strategic goals of the Parish Council for the coming years is to develop a credible Internet presence for Watermead. We have secured the Domain address [Watermead.org.uk](http://Watermead.org.uk) and we are now beginning to develop our plans as to the objectives and content of the web site.

We are looking for volunteers! Maybe you work/own a company who could sponsor our activities through design work, web space or advertising. Or maybe you are a student or techie looking for a project to utilise your talents. We can promise you a rewarding time with full support from the Parish council.

Please contact Jason Bray if you can lend a hand!  
e: [jasonbray@hotmail.com](mailto:jasonbray@hotmail.com) f: 0704 406 9931



**HELP YOUR CHILD  
ACHIEVE THEIR POTENTIAL**

# Opening in Watermead

A new Kumon Maths Study Centre will open  
at the Watermead Village Hall  
on Monday, 8th April 2002

- Kumon is an after-school programme for learning maths
- established for 40 years, with over 30,000 UK students
- suitable for children of all ages and abilities
- designed to develop the potential of each child at their own pace
- extends from counting to calculus
- emphasises the importance of practising mental arithmetic skills
- complements the National Numeracy Strategy in schools
- develops the self confidence of children
- daily study improves concentration
- children cannot fail

For further details, call Susan Jones today on  
01296 747469, or  
E-mail: [Susan@susanjoneskumon.fsnet.co.uk](mailto:Susan@susanjoneskumon.fsnet.co.uk)



**KUMON MATHS**

**SUCCESS YOUR CHILD CAN COUNT ON**

# Watermead Snippets

The issue before last we wrote about the amazing work of Dr Hugh Cox, his **Sozo Clinic** and his world-wide reputation. We are sad to announce that Dr Cox died quietly in his sleep a short while ago. The Parish Council sends our condolence to the family.

Mark Runicles who works at Reflexions is planning a **sponsored skydive**, on Saturday 16th March, to raise money for the MacMillan Cancer Trust. Mark was hoping to raise £500 for the charity but so far has over £600 promised. If Mark can leap from a plane flying at 13,500 feet, you can surely spare £5 to sponsor him. He must be bonkers ^ not only is he doing the jump, he is scared of heights!

Another madman performing for charity is our own Phil Toler, husband of Councillor Toler and Lakeside Land treasurer. He is taking part in the **London Marathon** on 14th April in aid of Victim support. At the grand old age of 48, this is his first marathon and you can see him practising round Watermead. Hope you make it ahead of the 90 year old runner from Ellesborough, who does the High Wycombe run twice a week, for fun!

Watermead's own Michael Shrimpton recently lost a case that many of us oldies wish he could have won. He was defending the **metric martyrs**, who were wicked enough to sell their goods in pounds and ounces rather than kilos and grams. Sadly he lost. The original martyrs came from London, Surrey, Wearside and Cornwall. The stallholders in Aylesbury market were not charged and are sticking to the old measures - at least until prosecution is threatened. The district court however, had certified a point of law of general public importance and Petitions for leave of appeal have now been lodged. Please visit [www.metricmartyrs.com](http://www.metricmartyrs.com) for more information.

We are still **looking for a gardener** to write a column on the very particular problems of gardening in Watermead. Many newcomers find the peculiar mix of clay, builders' rubble and too much rain on low-lying land hard to deal with. You do not need to be a wizard with words; one of our writers will be pleased to help with the final composition.

One Osprey resident returned home fairly late and found her **driveway**

**blocked by a car.** She asked the courting couple to move, but had to wait at least ten minutes whilst they got their clothes back on! Watch out all of you who have the benefit of a romantic lakeside view.

As reported last issue, Thames Water are regularly called out to deal with **blockages**. Whilst we are assured that our pipes conform to building standards, it is a worry that some houses regularly suffer from the effects of such blockages, with water rising in the loo to the point where it could spill out.

**VILLAGE VIEW SMALLS**  
Advertise here for **£5** -  
maximum of 30 words.  
Contact Paul Wilson: 488066

**MOUNTAIN BIKE:**  
Townsend Team Elite.  
Needs an overhaul but  
fundamentally  
sound. £20.  
Tel: 01296 488066

**OBSIDIAN ART - NEW FINE ART GALLERY -**  
**OPENING SUNDAY**  
**APRIL 14TH**  
Original paintings, sculpture and limited editions. Open 10am - 5 pm Tuesday to Sunday. At the Bucks Goat Centre, Stoke Mandeville. Tel : 01296 612150

**HOMEOPATHY: Holistic Health Care For Every Body.** JILL TODD BSc FIBMS MACH. Effective in the treatment of many health problems. For further information or to book a consultation Tel: 01296 613188

**FED UP WITH IRONING?**  
Leave it to us! Free collection and delivery. All items fully insured. Quality assured. Ironing World 01296 399040

## CREATIVE DESIGNER

**LIZ JUDD**

BA Hons



Are you looking for that perfect design?  
Call 01296 437853 for a consultation

A plan and set of elevations hand drawn or C.A.D to suit you and your ideal interior.

Accurate drawings, finished to scale, providing good visual detail.

Finished Hand crafted, bespoke interior furniture and design, in your chosen details.

## Waterlilies

NEEDLECRAFT & GIFTS

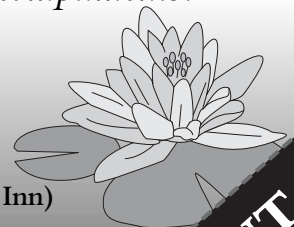
*Imaginative gifts for all occasions and a growing range of ideas for children including Ty and Brio. We will be happy to gift wrap with our compliments!*

**Tel: 331313**

1 The Piazza, Watermead  
(opposite The Watermead Inn)

Open:  
Tues to Sat 9.30am - 5.00pm  
Sun 10am - 3.30pm

**10% DISCOUNT**  
off all full-priced items  
with this voucher  
until end of April  
2002!





# AVANTI

HAIRDRESSING  
AND THE  
BEAUTY COMPANY

Telephone 01296 488138

Watermead Village Piazza

Winner of the "Small Business Excellence" award 1997 & 1999  
and "Retailer of the Year" award 1998

**£5 OFF**  
Foils, Perms or  
DIA Colours

**AVANTI**

Valid from 01/04/02 - 19/04/02

Offer cannot be used with any other  
offer or discount. No photocopies  
excepted. Please bring this voucher  
with you to redeem offer.

**£5 OFF**  
Cut & Style

**AVANTI**

Valid from 01/04/02 - 19/04/02

Offer cannot be used with any other  
offer or discount. No photocopies  
excepted. Please bring this voucher  
with you to redeem offer.

**Avanti requires:**

- FULL OR PARTIME STYLIST,
  - SHAMPOOIST/ASSISTANT
- evenings and Saturdays, 16 years PLUS.
- FULLTIME POSITION FOR APPRENTICE IN  
HAIRDRESSING NVQ LEVEL 2/3
- Tel: Anna or Maria 01296 399267

**OPENING HOURS**

Monday 9.15am - 6.15pm, Tuesday, Wednesday, Thursday 9.30am - 9pm, Friday 9am - 7pm, Saturday 8.30am - 4pm

## THE WHITE HORSE INN WHITCHURCH

*For excellent meals from bar Snacks  
to a la Carte.*

*Using local suppliers for vegetables  
and meat.*

*Our Aberdeen Angus Best Scotch Beef  
Steaks are the best in the area.*

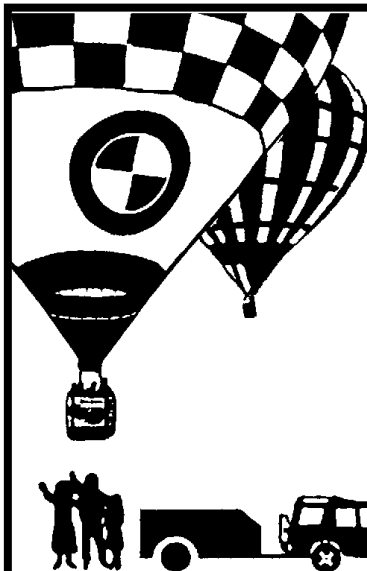
*We have a changing selection of real ales.*

*Patio Garden and large car park at rear.*

*David, Sally and staff  
look forward to meeting you.*

Tel: 641377 Fax: 640454

Booking is advisable.



BUCKS  
BEDS  
HERTS  
OXON

Lakeside take off  
Single or group bookings  
We only fly small balloons  
Maximum 5 persons each balloon  
For the ultimate adventure  
Ask for our brochure



*Champagne Flights*



01296 641153





# Lakeside

## Takeaway

a comprehensive menu of the finest  
**Cantonese & Peking Cuisine**

Comfortable Lounge

**FREE  
DELIVERY**  
FOR MEALS OVER £12 FOR  
WATERMEAD RESIDENTS

The Piazza, Watermead

Telephone:

**01296 339364**

# Spring Work-In - 27th April

**I am proud of our Watermead Village and feel fairly sure that you are too. So, this is the chance to prove that I am right. We need more than a handful of residents to answer the call, so let's see if we can break all records for the volunteer helper team. Doubtless you will have read elsewhere in The View of the plans for our village and the Parish Council. Well, until that time becomes a reality Watermead needs the help of its residents. We need YOU.**

Some readers may remember, in the Winter Village View, I asked for comments about the date of 'Work-In's'. Well, Dorothy and I have taken these comments into account and fixed the next one for Saturday 27th April and a slightly later starting time, 9:30am. That should take care of school half terms and also the following Bank Holiday weekend. Is

that the rustling of diaries I hear? .... Good. We all hope that the ground will have dried out by the 27th and that the weather will be more kind to us than it has been lately. It would be good to reclaim the various meadows back from the moles. This winter seems to have been the worst year for mole invasion in ages.

It would also be good if we could achieve some of the following projects. The bridge to the Little Bandstand and also the one at the back of the Little Lake need to have the step onto and step off smoothed out a little, a good brick and cement job for some of us. It has been too wet to finish the clearing up after the new age travellers, so that might be a task for people with good strong gardening gloves. Then we might be able to finish the bonfire on the concrete base. It is hoped that we will have the grass cut by the 27th. Another project, which is an overhang from last year, is to cut back the hedges around

the Balloon Meadow. Of course, we will have to do the usual path clearing and litter collection.

As always, we aim to break for lunch in the Village Hall and those who can do a little more afterwards will be welcome and for those who need a rest then thank you for the morning's work.

Would you please bring any gardening tools you have such as bough cutters, wheel barrows, rakes and especially gardening gloves. We still have a chain saw and petrol driven hedge clippers. Let's have a great day on the 27th and admire our handiwork on the 28th. See you there!

*Roy Hutchings - 397675*



Watermead Parish Council presents:

# A Fair at the Piazza

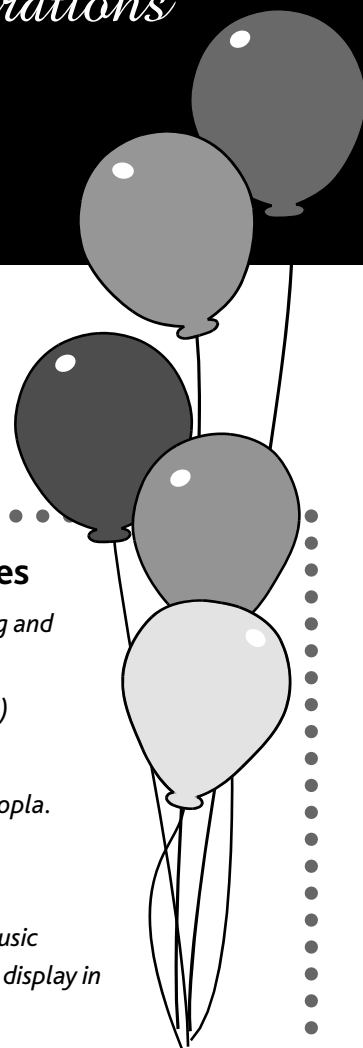


## The Golden Jubilee Celebrations

Monday 3rd June 2002 - 4pm onwards

JOIN US AT THE PIAZZA FOR AN EVENING OF ENTERTAINMENT AND FUN!!

We envisage that the celebrations will begin with STREET PARTIES from midday. Have you thought about organising one in your part of the neighbourhood? It is not too late to let us know. Perhaps a few streets can get together. This is an excellent opportunity to get to know your neighbours. You may or may not need to close a road/cul-de-sac; either way, please let Dot Toler know so that she can inform Aylesbury District Council asap.



### From 4pm onwards, the Piazza will be the centre of exciting activities

*Col. Custard - The UK's Children's Entertainer of the Year - 5 - 6pm followed by an hour of stilt-walking and bendy, stretchy balloon blowing.*

*'Live Jazz Band' & 'Duo' in the bandstand throughout the evening (kindly sponsored by Watermead Inn)*

*Sizzling Bar-B-Q (courtesy of Watermead Inn)*

*Bouncy Castle Inflatable Slide (7-10 yr's), Bungee jump (possible). Many stalls eg Tombola, Raffle. Hoopla.*

*Coconut Shy, Books, White Elephant Skittles, Cakes, Crafts - any other ideas?*

*Beacon-lighting (sited at the top of the ski slope) at 8 pm*

*10 pm Grand Finale - 'FIRE WORKS DISPLAY' - a musical. The Finale will be a compilation of popular music throughout the Queen's 50 year reign as our Monarch and will be choreographed to create a stunning display in synchronization with the music for approximately 13 to 15 minutes.*

## What's on at the Watermead Village Hall

### JUDY WALSH SCHOOL OF DANCING

Mondays: 7.30-9.30pm

#### Childrens Dance

Wednesdays:

3-6 years 4.30-5pm

Beginners 5-5.45pm

Advanced 5.45-6.30pm

Judy 482818

### IRISH DANCING

Every Wednesday

except second

Wednesday of each

month: 7.00-8.00pm

Edwina McGill

01908 374273

### PARISH COUNCIL

Third Thursday of the month. Surgery 7.45pm, Meeting 8.00pm

### AYLESBURY & DISTRICT PHILATELIC

Second Wednesday of the month 7.30-10pm

Keith Johnson 435571

### WATERMEAD & WEEDON WOMEN'S INSTITUTE

First Thursday of the month

7.30-9.30pm

Jo Bridson 747465

### WATERMEAD CYGNETS PLAYGROUP

Monday-Thursday

9.15-11.45am

Dot Toler 432405

### MOTHER & TODDLERS

Wednesday 2-4pm

Friday 10am-12noon

Melanie Simpson 424097

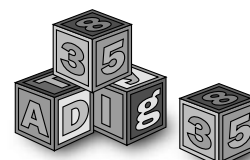
### YOGA

Every Tuesday

6.30-7.30pm &

7.30-8.30pm

Gail Smith 747900



# Do you live on Watermead? Are you between 5 and 18 years old? Would you like to take part in the 'Beacon-lighting' run? Here's how..... enter this drawing/colouring competition....

**Paint a picture on the theme - 'Play/recreational Facilities' - what would you like to see on Watermead?**

There will be 3 categories 5-8 years, 9-12 years and 13-18 years.  
The size is to be no larger than A3.

In the 13-18 age group only, please complete the caption:  
"I would like to light the Golden Jubilee Beacon because....."

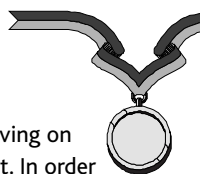
The winner from each category will take part in a relay across the balloon field, with the eldest winner completing the run up the slope and lighting' the beacon. The winners will receive special

commemorative prizes.

Please submit your entry to one of the addresses at the bottom of the page. Include your name, address and age. Closing date of the competition is Sunday 19 May 2002. The judges' decision is final. Drawings of the winners will be displayed on the Parish Council notice board.



## Would you like a Souvenir Medal for your child?



The Parish Council would like to give every child living on Watermead a Souvenir Medal of this historic event. In order to have some idea of numbers, we would appreciate it if you could take a few moments and fill in the form below. Your child may not receive his/her free medal if you do not send in the form. Guests of the children may order a medal at £1 each. Closing date is April 20 2002. Thank you.

## Have you often heard the comment 'Nothing happens in Watermead?'

Here's your chance to change all that - you can make a difference! Your help will be invaluable. Just fill in the form below where appropriate and we will be in touch. Thank you.

### Request for Souvenir Medals

Name: \_\_\_\_\_

Address: \_\_\_\_\_  
\_\_\_\_\_

Child's name(s): \_\_\_\_\_ Age: \_\_\_\_\_

\_\_\_\_\_

\_\_\_\_\_

Child guest(s): \_\_\_\_\_ Age: \_\_\_\_\_

(£1 per medal)

\_\_\_\_\_

\_\_\_\_\_

\*I/we are able/unable to collect the medal(s) on the 3 June at the Piazza

\*delete where appropriate

### Can you help?

Name: \_\_\_\_\_

Business (if applicable): \_\_\_\_\_

Address: \_\_\_\_\_  
\_\_\_\_\_

Tel: \_\_\_\_\_ email: \_\_\_\_\_

Please tick the following:

Would you like to run/assist in the running of a stall? Yes \_\_\_\_ No \_\_\_\_

If yes, please give approximate time available:

set up, 4-5pm, 5-6pm, 6-7pm, 7-8pm, 8-9pm, clear-up.

Would you like to be a bar steward? Yes \_\_\_\_ No \_\_\_\_

Would you like to donate prizes/items for: Raffle, Cakes (wrapped and labelled), White Elephant, Tombolas (bottle/children's)

Businesses on Watermead - We can/cannot donate a raffle prize

Please return the above forms by April 20th 2002 to:

Dot Toler - 3 Chaffinch, 432405

Marcia Lang - 5 Lakeside, 435544

Mary Singleton - 6 Redwing, 428569

Waterlilies - The Piazza

Sandra Landy - 32 Kestrel Way

Ron Pordage - 26A Lark Vale

All enquiries to: Dot, Marcia or Mary.

# Security and Neighbourhood Watch

Thanks to the response we received regarding the article on security, it was decided to go ahead and appoint one of the security companies that we had interviewed for a trial period of three months. The company is Armstrong Security and we expect them to begin work on the 11th of March. The period of the trial has been chosen so that it will cover the Queen's Jubilee celebrations; in fact we will need extra coverage at that time.

Armstrong Security will provide uniformed men to patrol Watermead at random times during the hours of darkness, between Monday to Thursday, and more regularly on Friday, Saturday and Sunday nights. So don't be afraid to approach a uniformed guard if you have a problem or see something untoward happening. The guards will choose different routes around Watermead so that the criminal fraternity will never know where or when they might appear.

The Parish Council will regularly receive a written report and the Aylesbury Police will be kept informed, so that the security company and the police can work along side each other. After this initial trial we will be evaluating the exercise to see whether it has proved valuable. We would be pleased to receive comments on its effectiveness and suggestions for the future from any Watermead resident. Please contact Councillor Marcia Lang on 435544 or drop her a line at 5 Lakeside.

For the trial, the security company has only been employed for a minimum amount of time and, in case you think we are extravagant, is costing the parish less than 33 pence per household per month – not very much for a little piece of mind.

This trial does not mean that the need for alertness by everybody is less important. Thames Valley Police are stretched to capacity

and we can all help each other through the Neighbourhood Watch. Our actions should complement what the police and security guards are doing. You should continue to watch out for incidents that occur around the estate. Now is the time for you to consider how Neighbourhood Watch can help. Here are some facts you may not be aware of:

- We do not live in a high crime area; in fact this is one of the safest residential areas in Aylesbury.
- We do suffer from minor crimes, which are mostly Criminal Damage to and Theft from motor vehicles. There are precautions that we can all take to reduce the chances of this happening, such as locking vehicles, not leaving possessions in sight and using the garage for the car.
- The Neighbourhood Watch has constant communication with Thames Valley Police and is a member of the Neighbourhood Watch Association – a national

scheme. The Parish Council will be discussing how to help Neighbourhood Watch grow more effectively.

- Neighbourhood Watch Coordinators are currently covering parts of Lark Vale, Bullfinch Close, Owl Close, Partridge Way, Curlew and The Piazza.
- Criminals tend to avoid areas where Neighbourhood Watch signs are displayed.

The Parish Council supports Neighbourhood Watch and we hope you will too. You do not need to be an active member yourself as long as we have Coordinators that you can contact in an emergency – usually one for every 2 or 3 streets.

If you would like to show your support or would like learn more about what you can do to help please contact: Mike and Sandra Gowling, 22 Lark Vale Tel 01296 420956.

# W

## atermead dental centre

### dental excellence in the centre of your village

- NHS exempt groups between 10am - 4pm
- 7 day emergency cover
- very competitive rates

*New residents to Watermead are warmly welcome  
Visit us for your next check-up  
We're right on your doorstep*

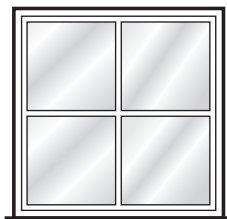
The Village Square Watermead Aylesbury HP19 3FX  
**Telephone: 01296 330700**

Lythan Davies BDS and Associates

#### OPENING TIMES:

Tues, Wed, Thurs	9am - 8pm
Mon, Fri	9am - 5pm
Sat	10am - 1pm

# SAMSON WINDOWS



*Style, Quality & Value*



As a local company with over 20 years experience, we pride ourselves on supplying products with genuine and honest service - our outstanding local reputation speaks for itself.

Throughout the region we are supplying a range of products and services to the highest quality - with satisfaction always guaranteed: windows, doors, & conservatories - PVC-U, aluminium or timber.

We specialise in 'traditional style sliding sash windows' and 'neo-Georgian' types, including 'arched head frames' and 'horned sashes', as found in the Watermead houses. We can refer you to residents who are more than pleased!

With no pressure and no gimmicks - we promise you a 'first class' service that will satisfy your needs entirely.



## **FREEPHONE 0800 146 165**

**[www.samsonwindows.co.uk](http://www.samsonwindows.co.uk)**

Aylesbury High Wycombe Watford Slough Maidenhead Windsor Woking Reading

## *Sue's Flowers*

Personal florist service on Watermead

We provide a one-to-one service for all your flower needs whatever the occasion including:

***Weddings a speciality  
Bouquets & wreaths  
Table and basket arrangements***

We can also design and supply your corporate event requirements

**Call 07803 172067 or  
01296 488101**

Visit our website [www.suesflowers.co.uk](http://www.suesflowers.co.uk)  
to order flowers anytime 7 days a week

All prices include free delivery in Aylesbury Vale

## **HARDWICK PRE-SCHOOL**

JOHN BRIDLES HALL  
LOWER ROAD, HARDWICK

Our school caters for children aged between 2 1/2 and 4 1/2 years old. We are open for 5 mornings a week between 9.30am and 12.15pm and Tuesday and Thursday afternoons from 12.15pm to 2.45pm.

Sessions for children aged 3 or over are free subject to the provision of government vouchers. Children generally leave our group to attend Whitchurch Combined School.

Come and meet our friendly, caring staff and read our excellent OFSTED reports.

Please telephone the Play Leaders

Tracey Creed 01296 7147889

Kym Sims 01296 688169



# ***“Probably the friendliest club in Bucks!”***

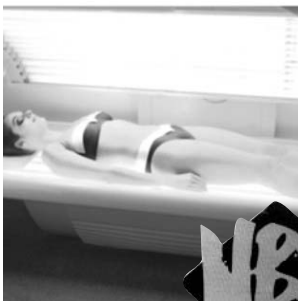
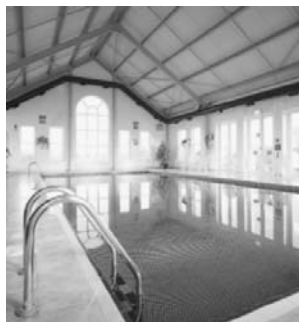
## **Memberships to suit all ages and abilities!**

**TRY BEFORE  
YOU BUY**

**7 DAYS FREE  
TRIAL MEMBERSHIP  
WITH NO OBLIGATION**

**Reduced joining fees  
for all Watermead  
residents - pay only  
£10 enrolment fee**

- Well equipped gyms
  - 28 classes a week
  - Tanning, Toning & Treatment centre
  - Free private car park
  - Kids fitness timetable
  - Fully supervised crèche
  - Swimming pool
  - Tennis courts
- and **MORE .....**



**RefleXions**  
Health & Leisure

**Call customer services on:  
01296 330311**

**Watermead, Buckingham Road, Aylesbury**



# WATERMEAD WILDLIFE WATCH



Hi Folks!,  
Here we go, into Spring. You could set your 'Seasonal Clock' by the activity of the wildlife - the Mallards going through their courtship, lots of head bobbing & circling each other before mating. Their eggs hatch after 22 - 28 days incubation in April/ May time. The female is mostly left to rear the ducklings alone. The Grebes have a slightly different approach - they too start by circling each other, shaking their heads and ruffling their feathers followed by a dive to the bottom of the lake, where they collect some weed, rise out of the water chest to chest with the weed in their beaks as a token of luv - equivalent to twelve long stemmed red roses, I guess! Both parents share the incubation, 25 - 29days, hatching April/June approx. Both parent share in the rearing of the young. The Swans courtship is very graceful and can be likened to ballet on water. The female,

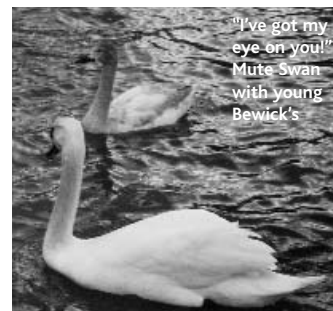
almost unaided, incubates the eggs for approx, 35 days and they hatch May time. However, the male is very protective of his family throughout - we have seen many instances on both lakes to back this up! So a very busy time for all residents on the lakes coming up!

Talking of Swans, we have a large number (in excess of 30) here at the moment; I suspect they will all be driven away by George and Henry when the territorial fight begins. This time of year a lot of youngsters are on the move, having been driven away by the parents in order to rear another family, and as they don't start breeding until adult, around 4years old, (although they do 'play house' from around the age of 2) they are in transit until they find a place to settle. Amongst the latest influx, you may have spotted what appears to be a small mute cygnet. It is a young Bewick's Swan. We have

had an adult visit in the past, it's the smallest of the Northern swan family, approximately 3/4 the size of the Whooper Swan, which also has yellow marking on the beak. It's difficult to distinguish between the two, the Whooper being similar in size to the Mute swan, ( the most common). I would think this youngster has been 'moved on' - he's been here a while now, and it would be nice if he and the rest could stand up to George and Henry and stay. We shall see.

The Cormorants are still fishing from the boats. I suspect Bertie The Heron will return to claim his rightful place, and all will be back to normal soon.

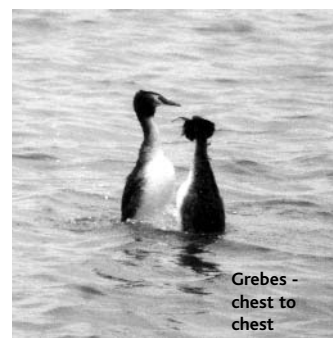
So with everything Springing into action and lots of new life to look forward to I'll say - Bye for now, Happy Easter, Linda Jones



"I've got my eye on you!"  
Mute Swan  
with young  
Bewick's



Bertie -  
The Heron



Grebes -  
chest to  
chest

## ZILLWOOD

*Grounds & Garden Maintenance*

Will this season be offering a grass, hedge cutting and general garden maintenance service.

Please contact Dave Woods

Office: **01296 670075**

Mobile: **07711 765341**

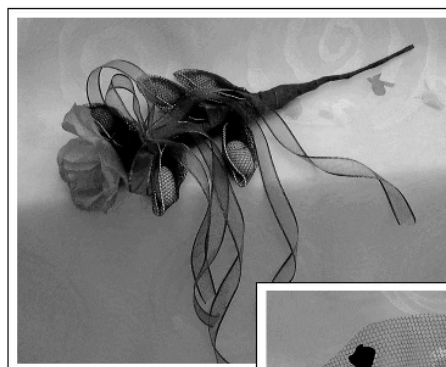
[zillwood@davewoods.freemove.co.uk](mailto:zillwood@davewoods.freemove.co.uk)



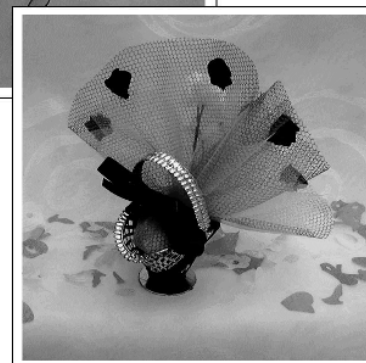
## Wedding Favours

*with a difference*

*...a beautiful way to remember your day.*



*The  
Favour  
Vault*



*Ask for details of our wide range of exquisite, hand-made souvenirs for your wedding guests - call Anna at 'The Favour Vault'*  
telephone: 01296 487552 e-mail: [anna\\_mizzi@hotmail.com](mailto:anna_mizzi@hotmail.com)

# MANY PRODUCTS CHEAPER THAN SUPERSTORES

## CANS - 500ml

Heineken	8 for £6.00	Murphy's	5 for £5.00
Hofmeister	8 for £5.00	Caffreys	5 for £5.00
Stella	6 for £5.40	Boddingtons	6 for £5.00
Fosters	6 for £5.00	Miller	6 for £5.00
Carling Black Label	6 for £5.00	Carlsberg	6 for £5.00
Holstein Pils	6 for £5.50	Draught Guinness	5 for £5.00
Grolsch	6 for £5.00		

## BOTTLES - 330ml

Big Budweiser	4 for £5.00	Becks	6 for £5.00
Fosters Ice	6 for £5.00	Bacardi Breezer	4 for £5.00
Stella	6 for £5.00	Rolling Rock	6 for £5.00
Bud Ice	6 for £5.00	Vodka Source	4 for £5.00
Heineken Export	6 for £5.00	Vodka Ice	6 for £5.00
San Miguel	6 for £5.00	Smirnoff Ice	4 for £5.00

## WINES

1 red & 1 white (special offer)	£5.00
Liebfraumilch	£2.49
California Red/White (Maximus)	£3.49

### Italian Wines (Il Borgo)

Frascati, Ouitro, Chardonnay, Valpolicello, Cabernet Veneto, Merlot	2 for £5.00
--	-------------

**Open: Mon-Thurs 3pm - 10:15pm  
Fri-Sat 12noon - 10:30pm, Sun 12noon - 10pm**

# MAK WINES

158 Buckingham Road (Opposite Dutton Forshaw) Tel: 436705

# Watermead's News Agent



There has been a newsagent in the Piazza since the shops first opened early in the nineties. Mick Lewis, owner of Avanti, purchased the shops from the official receiver after the developers, Royco, went bankrupt. At the time there was little estate to see, only a newly dug lake and ski slope, plus a lot of muddy fields, so it was quite a brave investment at the time.

He is still the landlord and responsible for the upkeep of the piazza – apart from the Watermead Inn, which is owned by Scottish and Newcastle. Now all the shops are rented out and it is good to see them all occupied. I guess most people would like to see a greater range of provision, but we are lucky to have what we do. Many villages have lost all their local facilities.

Mr Adil, as he likes to be called, moved to Watermead nine years ago but, with his son Mo, he only took over the newsagents three years ago. He is a friendly man who likes to have a joke with his customers, but you would be making a mistake if you thought he would stand any nonsense in his business dealings. He certainly got the better of Cadbury's by refusing to carry their lines when they were reluctant to replace faulty stock. Go in the shop now and you will see Cadbury chocolate back on the shelves and any complaints are dealt with speedily.

When Mr Adil first took over the shop, he applied to become a sub-post office. The Elmhurst shop said it would affect their trade and, with many sub-post offices closing through loss of trade, the application was rejected. This was disappointing, as many Watermead residents have said how much a post office would be valued.

Mr Adil aims to sell what his customers want but with a small selling space it is impossible to carry every line requested. His main trade is in newspapers, milk and bread all of which are delivered fresh daily. Cigarettes used to do well

but nowadays we are all trying to be healthy and he reckons twenty-five of the residents have given up since Christmas. His videos are mainly hired out at the weekend and sit on the shelves all week. Spend enough in the shop and he might do you a cheaper loan price!

The one thing everybody would like to see stocked is bottles of wine. It's not only the customers at the next door Chinese takeaway, but everybody who has unexpected visitors that would like to be able to pop in and buy something to drink at home. Sadly Mr Adil's application for a licence to sell wine was turned down. Scottish and Newcastle objected to the licence, even though it is hard to see how it would significantly affect their trade.

A petition was signed by around 500 people but this was not enough to sway either the brewery's or the licensing authorities' decision. Another application will be made soon and if any of you would like to offer support, the owners would be very grateful. Call in and add a signature.

## WM NEWSAGENTS



Opening Hours:  
6.30 am - 8.30 pm  
Weekends open till 9.30 pm

*Instant's*

**MOBILE PHONE VOUCHERS AVAILABLE**  
**EARLY MORNING PAPER DELIVERIES / GREETING CARDS**

**NOW SELLING EVENING STANDARD NEWSPAPER EVERY DAY**

### VIDEO & DVD LIBRARY

Top 50 titles including:

Soul Survivors, Artificial Intelligence,  
Moulin Rouge, Scary Movie 2, Legally Blonde,  
Mike Basset England Manager, A Map of the World,  
American Pie 2, The Body, A Knights Tale,  
Planet of the Apes ... and many more!

*Confectionery,  
soft drinks, groceries,  
dairy products  
and frozen food*

*Easter Eggs*  
Easter cards  
**CASH POINT MACHINE  
COMING SOON**

**Watermead Village Piazza Tel: 338435**

# *The Riviera Restaurant*

100 SEAT DINNER &  
DANCE RESTAURANT

*Cosmopolitan Menu*  
OPEN 7 DAYS A WEEK

We can cater for parties in our  
function room for up to 150 people,  
hold children's tobogganing parties  
plus we have facilities for non-  
motorised water sports

pleasant atmosphere • great food at  
reasonable prices • fantastic views  
across the lake and FREE car parking  
LIGHT FOOD FOR LUNCH TIME



**For bookings please call:**

**399699**

**Fax: 432288 Mobile: 07973 197542**

Watermead, Aylesbury, Bucks HP19 3FU

## The Easter Festival

Easter is the most important festival of the Christian year, so St James at Birtton is again planning a full programme in the days before Easter and after Easter Day itself. All Watermead residents are invited to join in any of these, as well of course, as our regular services.

On Palm Sunday 24th March at 9.00am there is Eucharist with the Procession of Palms

On Wednesday 27th, Thursday 28th and Good Friday 29th there is a children's Holy Week Project from 10.30am to 12.30pm, intended for children from 5 to 11.

On Maundy Thursday 28th, the Eucharist to celebrate Jesus' giving us the Communion is at 8.00pm and is followed by the Watch of the Passion till midnight. Come for a few minutes or longer, you are not expected to stay the whole time unless you want to.

On Good Friday 29th, Revd Anne Faulkner leads meditation on the Final Hour on the cross from 2.00-3.00pm. Then the Solemn Liturgy of the Day with Communion, for those who wish to receive it, is at 8.00pm.

On Holy Saturday 30th, members will be decorating the church in the morning (do come and help) and Easter Ceremonies are at 8.00pm in the evening.

Easter Day has a full programme of worship: Holy Communion (BCP) at 8.00am; Sung Eucharist and Renewal of Baptism vows at 9.00am, Family service with Communion at 3.00pm, and a service of Easter Hymns and readings at All Saints, Hulcott at 6.00pm.

On every day in the following week there will be a celebration of Eucharist at St James.

Looking ahead, there will be a special service at 3.00pm on June 10th when groups from the community will be invited to send official representatives to celebrate the Queen's Jubilee. All will be welcome.

---

## We don't make jam...

Do you want to meet new friends, learn new skills and have a voice on local and national issues? If so, we may be the group for you!

We are a lively group of women aged from twenty something upwards, who share a varied programme of speakers and events throughout the year. Already we have had a new members party and attempted to paint ceramics with the help of Unique Creations.

**Events to come:**

April 4th Hypnotherapy and past life recall (speaker)  
May 2nd Hand bell ringing (demonstration)  
June 6th Beauty evening (speaker and demo.)  
July 4th Mystery evening (???????????)

New members are most welcome to join us on the first Thursday of every month, 7.30pm - 9.30pm in Watermead Village Hall.

Contact Jo Bridson 747465  
Watermead & Weedon WI Chairman

.....And we don't sing Jerusalem!!!



## CAREER CHANGE

Is your background in  
Management/Senior Management  
Team Leading  
Recruitment  
Marketing  
Sales  
Teaching  
Business?

Looking for long-term security, flexible  
working hours, to be paid what you're worth  
with a stable and expanding company?

Tel: 01296 398236  
For details and local interview

## Local Secretarial Service

Watermead resident available for all your  
secretarial needs:

invoicing  
estimates  
letters

Qualified in Word Processing, Databases,  
Spread Sheets

Fast and reliable service from own home

For more information please contact

Emma 01296 437879

## HANDYMAN Services

**All general domestic  
maintenance & repairs  
undertaken  
Garden tidying/clearance -  
Gutter and Drain Maintenance  
and cleaning**

**Please call Nik on  
01296 487017 (home)  
or 07971 671943 (mobile)**

## ***securelee*** *Security Services*

*LEE HALL  
Locksmith & Security Consultant  
Emergency Callouts*

*Specialising in UPVC / Aluminium  
Door & Window Locks*

*For all your Domestic & Commercial  
Security needs*

*Tel: 01296 487017  
Mobile: 07712 552141*

*(10% discount when you show this advert)*

# The Watermead Inn



OUR CARVERY IS NOW OPEN  
ALL DAY SATURDAYS

Bar open for fine food and drink all day and every day

Quiz Night  
Tuesdays at 8pm

recommencing on March 19th

Free drink for participants

*One free drink up to a value of £3.00 on production of this advert.*

*Bearer has to be participating in quiz. One drink per customer.*

*Valid for that day only.*