

VillageView

WATERMEAD'S FREE QUARTERLY MAGAZINE

Summer 2023 Vol.30 Issue 2

Larks by the Lake
including a Fun Dog Show
Sunday 28th May

**Watermead
Open Gardens**
Sunday 9th July

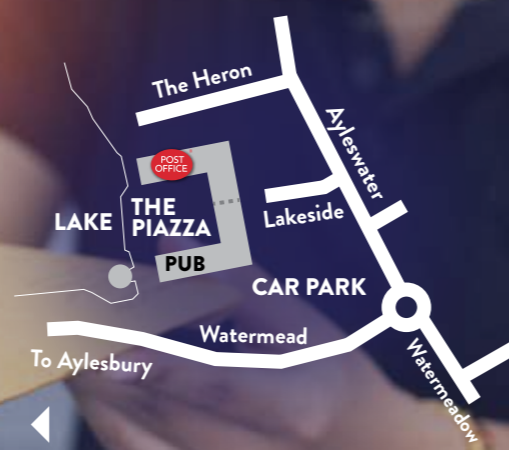
FNHC Walk of Light
Saturday 24th June



News from Watermead Parish Council & more!
watermead-pc.gov.uk / @watermead pc



WELCOME
OPEN



POST OFFICE OPENING TIMES
Monday to Friday 7.30am - 5.30pm
Saturday & Sunday 7.30am - 12.30pm

POST OFFICE

Mail/Parcels | FREE Cash Withdrawals | Banking
Mobile Top-Up | Bill Payments | Travel Money

at **WM News & Food**
your local convenience shop

OFF-LICENCE
ICE CREAM
FOOD TO GO
GROCERIES
PET FOOD

HOT & COLD DRINKS
HOUSEHOLD PRODUCTS
PHOTOCOPYING & FAX SERVICE
SANDWICHES
GINSTERS PIES & PASTIES
FRESH FRUIT & VEG



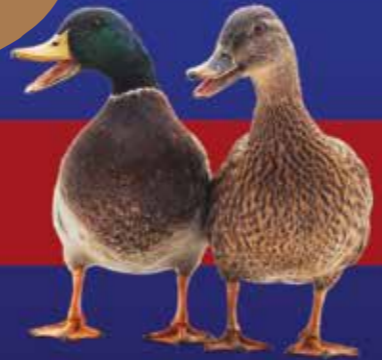
Watermead postcards
2 for 99p or 65p each

It could be you!



Players must be 16 or over

We sell
Natural Choice
Duck Food



SHOP OPEN SEVEN DAYS A WEEK
7.30am to 7.30pm



FIND US 'Watermead Post Office'
Watermead Village Piazza HP19 0FX Telephone: 338435

Parish Chairman's Annual report

This year has seen the end of Covid restrictions and the country returning to normal at last. This week the World Health Organisation declared the pandemic over. The year has seen enormous changes in the country with the national celebration of the late HM Queen Elizabeth II's platinum jubilee, followed so soon by her sad passing. Her loss was felt keenly. Most of us had never known another Monarch. The accession of HM King Charles III was a new experience for most and the associated ceremonies and traditions were fascinating. I write this on the day of his coronation. Despite the terrible weather the service proved to be moving and solemn; the parades were wonderful. A great national occasion with many street parties, entertainments and a volunteering day planned for the weekend. It's always wonderful to see communities joining together.

During the year we gained approval to build the **raised walkway** around the large lake and to improve the paths. The grant was from Buckinghamshire Council Community Board (Wing & Ivinghoe) and FCC Communities Foundation

meant we could go ahead. Work was completed before the bad weather and it is generally well used and liked. While we waited for plans to be approved, costs increased hugely. The council decided to use some of its reserve funds to cover the shortfall in order to get the work done. This was the most requested improvement suggested in the neighbourhood plan survey.

The work to span the area which floods during wet spells at the crematorium end of the path is still outstanding because Environment Agency approval is required. As soon as this is forthcoming, we will seek grant funding to complete the works, and hope that this can be done in the next twelve months. It's frustrating but we must find the right solution. The Parish Council is very keen to complete the project as soon as we can.

Open Gardens was held a little later than usual last summer. This proved more challenging for those opening their garden to keep their plants blooming and looking fresh but we still had a good number of visitors. It's a very enjoyable day raising money for Florence Nightingale Hospice. This year it will be on Sunday

9th July. Our thanks to everyone who took part and to those who visited.

The **Front Garden Competition** was held last summer and Cllr Irina Schwab had a difficult choice to make in finding winners. Flowers and garden designs were often outstanding and much appreciated by people taking a stroll around Watermead. The gardens help to make Watermead look its best. To make it even better, it would be very helpful if we could all keep hedges and overhanging branches clear of pavements. Overhanging trees and hedges make it difficult to walk on pavements and when wet it's very unpleasant.

Outdoor Film Night returned in September which was much enjoyed despite the very cold evening. Watermead Events Committee worked very hard to bring this event back. Our grateful thanks go to everyone involved. We hope that another film night will take place this September.

We look forward to the return of **Larks by the Lake this year on 28th May** which this year will include a flypast, Watermead bake-off, great prize raffle, entertainment, fun dog show, crafts and



Chairman:
Cllr Sue Severn
T: 336575
sue.severn@watermead-pc.gov.uk

In this issue:

- 04 Front garden competition
- 05 Children's drawing competition
- 06 Lindengate mental health charity
- 07 Tour de Vale
- 14 Don't give thieves shed loads of opportunities
- 14 Guide dogs
- 15 New photo ID requirements
- 18 Watermead celebrates the coronation
- 27 Watermead Open Gardens
- 28 Forget-Me-Not display at Waddesdon
- 28 Ride the Night
- 30 Three kings called Charles
- 32 Local charity seeks volunteers
- 34 Fun Dog Show - Larks
- 36 Larks by the Lake

Plus our regular features:

- 03 Parish Chairman's Annual Report
- 05 Neighbourhood Plan update
- 08 Cubs of 12th Aylesbury
- 10 What's On
- 11 View from Westminster
- 11 Tea break quiz
- 13 Watermead Piscatorialists
- 16 Places to eat
- 17 Book Review
- 20 Easy coronation recipes
- 22 Watermead wildlife
- 24 Watermead wildlife crossword
- 26 Watermead Allotments
- 29 Sally's Blog
- 33 Footsteps Pre-school
- 34 Watermead Lunch Club

[more on page 04](#)



Vice Chairman:
Cllr Adrian Schwab
T: 338118
adrian.schwab@watermead-pc.gov.uk



Cllr Dan Forder
T: 07565 804579
dan.forder@watermead-pc.gov.uk



Cllr Ashley Bond
T: 07976 729567
ashley.bond@watermead-pc.gov.uk



Cllr Mary Singleton
& Editor of the Village View
T: 428569
mary.singleton@watermead-pc.gov.uk



Cllr Mick Morgan
T: 07821 403784
mick.morgan@watermead-pc.gov.uk



Cllr Irina Schwab
T: 338118
irinaschwablegal@gmail.com



Parish Clerk and Halls Manager:
Noreen Shardlow
T: 395211 or 792137
(Call weekdays 10am to 2pm)
noreen.shardlow@watermead-pc.gov.uk



Assistant Parish Clerk:
Michelle Jackson
T: 481554
michelle.jackson@watermead-pc.gov.uk

more. If you can help on the day, please let Noreen Shardlow know on 01296 395211 and she'll let the committee know. These events require a lot of planning and work on the day by as many people as possible! Raffle prizes are also required.

Christmas was celebrated in Watermead in our usual style. **The Christmas Lights Competition** is supported by a growing number of homes. The winning displays were inventive, and enjoyed very much by residents and visitors. Someone told me that they always brought their children to see the lights at Watermead; it has become one of their family's Christmas traditions!

The **Christmas Craft Fair** returned last year with a good variety of stallholders offering hand-crafted and other goods. The event is always very sociable and much enjoyed. Thanks to Graham Severn for organising the event and to Dot Toler for her delicious catering.

The **Carol Concert** took place on a cold evening which, incredibly, coincided with the World Cup Final - who could possibly have guessed that this would happen? Attendance was lower than usual, and we hope that this year's event will be back to normal. Funds raised from the Christmas events were donated to Roman Park Trust.

The **Photographic Competition** was held online following the success of this format the year before. Once again, there were some great images. We are very grateful to Eric Rose for arranging and judging this - another difficult task.

Watermead Pub Lunch Club is back in full swing and Mary Singleton reports that numbers continue to increase. It's a monthly event, much-loved by attendees and we are grateful to Adi and Adriana and their team for continuing to welcome the club each month.

Kelvin and Nikki Wong have now stepped back from running the Watermead Inn. During the twelve years they ran the pub it has been a welcoming and much appreciated community asset. Their charitable events, donations and initiatives, particularly during the pandemic and beyond have been exemplary. They are always willing to help, join in, and facilitate fundraising. We will miss you and your lovely family but know that we can enjoy Miya in Aylesbury with another warm welcome and great experience. Kelvin and Nikki will continue to contribute to Watermead in lots of ways, including events and charities so I'm pleased to say we aren't losing them altogether!

Adi, who has been head chef for several years, and his wife Adriana, are already making lots of changes, new ideas and décor. We wish you every success.

Village View continued through the pandemic with virtual meetings. The editorial team has been producing outstanding editions this year with new contributors, wonderful photography, stories and more. Don't forget, Mary Singleton, as editor, is always happy to receive contributions and articles.

Watermead's **Neighbourhood Plan** is moving through its stages. It's an exciting and very important project which will shape our village for future generations. The in-person consultation events have been invaluable and it's been a pleasure to meet so many neighbours and friends and to be able to hear their views and ideas. I would like to take the opportunity of thanking everyone who has contributed, particularly Mick Morgan for leading the team, Noreen Shardlow and Peter Dean who have written, re-written and honed the plan, and Stuart MacKay who has engaged local businesses

and done much else to help. Sally Chapman's advice as our planning consultant has been invaluable and her patience and positive contribution is much valued.

Parish Councillors continue to work as hard as possible to deliver the parish council's services and initiatives. They each bring their own areas of interest and skills producing events, Village View, doing legal work, marketing, interest in wildlife and the environment and neighbourhood planning. The work of the parish is managed by our Parish Clerk, Noreen Shardlow and Deputy Clerk, Michelle Jackson. Following resignation, we welcomed Ashley Bond as a councillor. Ashley has been a staunch supporter of the parish, formerly as one of our District and now Unitary Councillors. His knowledge of the parish, planning and local councils is invaluable. Dan Forder has also joined. Dan is a well-known local resident, a skilled wildlife photographer and environmental expert whose photographs are enjoyed on social media along with his knowledge and advice.

I would like to end by sincerely thanking Noreen Shardlow, Michelle Jackson, all the councillors including those who have left. We also owe sincere thanks to Dave Lucas, John Hillier, Darren Adamson, Wayne Samuels, who work with us, often during emergencies, to keep Watermead safe and attractive. Their work goes beyond the usual transactional relationship for which we are grateful.

I hope that we will soon find ourselves in summer and able to enjoy our outdoor activities and wonderful environment.

Cllr Sue Severn, Chairman



Children's drawing competition

Children were invited to draw a picture of "Watermead Wildlife" to bring to the Neighbourhood Plan Open Day in March. In return every entrant was given an Easter Egg. The winner of this competition was Emily Collings of Lark Vale who was very pleased to receive a gorgeous, cuddly Easter

Bunny. Her pictures will be appearing in the relevant section of our Neighbourhood Plan document.

This event was very well attended by Watermead residents.

Neighbourhood Plan update

The last open day for the Neighbourhood Plan was a hugely successful day with nearly 70 people attending with a mixture of residents and business owners. The Village Hall was very well prepared and we now have an excellent format to enable people to follow the process and sections covered in the plan easily around the Village Hall. We also provided supporting packs and info for on-line access.

The number of questions and feedback we received was fantastic!

The Neighbourhood Plan Team are pleased to confirm that the draft Neighbourhood Plan has been received from Sally Chapman our retained Planning Consultant and has been circulated to the team and all Cllrs. This is subject to amendments and additional text.

A Green Space Assessment for all green space on Watermead has been undertaken. This will need to be scored on land value and it is the intention of the team to provide Watermead residents the opportunity to score the land at a future consultation day.

Engagement

It is critical that we do not lose momentum on engagement with all our stakeholder groups. So we will be organising more open days, more meetings, more communication. We will continue to develop the various sections in the plan. We continue to hold meetings where stakeholders require additional support/guidance/understanding.

We will keep talking to people when 'out and about' and make sure they understand the importance of their involvement and contribution. Once the final draft Neighbourhood Plan is ready further public consultation/presentation dates will be arranged. These will be advertised on our website and notice boards.

Mick Morgan



FRONT GARDENS COMPETITION

For the past few years we have been awarding prizes to residents of Watermead who have excelled in cultivating attractive front gardens. This was inspired by the annual county competitions in the UK for the best kept village. The competitions have been nationally organised by the Campaign to Protect Rural England (CPRE) since the early 1970s.

Gardens are judged on tidiness, appropriateness and appeal. Extra points will be awarded to those gardens encouraging wildlife ie birds, butterflies and insects.

Judging will take place during the coming weeks. The judges generally have a very difficult job in deciding who to award the overall winner as there are so many different styles - traditional, cottage garden, rockeries, minimal, etc.

We invite you to nominate either your own garden or someone else's garden for consideration for a prize. To do so email the Parish Clerk at noreen.shardlow@watermead-pc.gov.uk or write her a note and put it through the door of the Village Hall in the Piazza (between the dentist and Avanti Hairdresser). There will be a first prize of a Garden Voucher and runners-up will receive a bottle of champagne.

Irina Schwab



Lindengate mental health charity celebrates its 10th anniversary

In 2013, hoping to operate a pilot scheme that would provide horticultural therapy for local adults with mental health issues, Lindengate's founders asked for a small plot on an underused allotment adjoining Wyevale Garden Centre near their homes in Wendover, Buckinghamshire. Instead the garden centre offered them the entire five acre site. The site was waste high in thistles and brambles, broken greenhouses and sheds. Ten years on the weeds have gone, the sheds are repaired and painted and two huge poly tunnels have been constructed and we have a yurt (which you can hire). Our secret garden is now a stunning six acre wildlife garden with a Heritage Orchard, Nature Reserve, Kitchen Gardens and 2 RHS Chelsea Gold Award Winning Exhibits based next to Dobbie's Garden Centre.

Every year we support over 2000 people through our nature-based wellbeing programmes, sessions and Open Garden visitors. We provide adult wellbeing sessions, programmes for schools, young people, anyone needing support with low to moderate mental health, as well as those living with dementia and memory loss and their carers. Alongside this we now have a dedicated staff team and over 200 volunteers from horticultural experts to people who just want to get their hands dirty and meet new people.

To celebrate our 10th anniversary volunteers and staff are currently transforming part of the gardens into a brand-new Apothecary Garden. Yew Trees are now in place, with landscaping and planting due to commence shortly. The Apothecary Garden will contain herbs and flowers grown for their natural healing properties. The new garden will create a new space for visitors and participants to learn, work and relax. Next to the Heritage Orchard we are creating a swale. Swales are a type of sustainable drainage system which slows run-off, intercepts and filters pollutants as well as helping natural infiltration into soil. We will enhance the swale habitat by planting and sowing wildflowers and other native wetland species. It will also provide shelter and food for invertebrates, birds and mammals. Both gardens should be completed by the end of April.

EARLY SUMMER EVENTS

We are running a series of events to celebrate our 10th Anniversary which includes fundraising dinners and lunches at Chequers! Upcoming events for the public at our site include:

- **Sour Cherry Soup Play: Thursday 8th June (7pm start)**
Chalk, Cherries and Chairs is an ambitious five-year scheme which aims to connect local people to the wildlife and cultural heritage of the Central Chilterns. The scheme operates under three themes – wildlife, heritage and people – but the projects which fall under these three themes are all designed with the Chilterns landscape in mind. As part of this project Lindengate are hosting the play 'Sour Cherry Soup' by Sarah Clifford. This one person play will be performed in the Heritage Orchard. Venue opens at 5:30pm to allow you to enjoy the gardens, have a picnic or sit back and relax in our heritage orchard. Play starts at 7pm and lasts for around 45 minutes.
- **Mikron Theatre Company: Wednesday 21st June (7pm start)**
Mikron Theatre Company will be returning to Lindengate again on Wednesday 21st June. They will be performing 'Twitchers' on the main lawn, with the audience bringing their own picnics (& chairs!). You'll need your binoculars and camouflage coats! Doors will open at 5.30 for everyone to come in with their own picnic and enjoy a walk round the garden. Performance starts at 7pm. £13 for children/ £15 for adults.

OPEN GARDENS – NEW TIMES

Visit our winning unique secret garden with your friends and family. Summer opening times are Wednesday to Fridays 11am-4pm, Saturdays 11am-2:30pm. There is no admission charge, but we ask for a suggested £5 donation upon entry, thank you.

For more information on our programmes, events, volunteer opportunities & opening times, go to: www.lindengate.org.uk

Tour de Vale

There are three fantastic routes to choose from, all starting and finishing on the famous track at the Birthplace of the Paralympic Movement. The routes take the riders out into the beautiful Buckinghamshire countryside and are supported by regular water stops, volunteer marshals and support vehicles for your safety throughout. Choose from 25km, 75km and 110km routes and join riders of all ages and abilities in completing this fantastic charity bike ride. The 25km route is ideal for families, with all under 16's and hand cyclists going free. The two longer distances will have brand new routes in 2023 and now head north from Aylesbury to the beautiful countryside around Buckingham, Stowe and the Claydons. All cyclists will be rewarded with a well earned medal after crossing the finish line, where they will find massage tables, entertainment from Bucks Radio, a barbecue and a bar so that they can recover and relax with friends and family after the event.

To find out more about this year's event and to sign up for the 2023 Bucks Radio Tour de Vale please visit www.tourdevale.com

Volunteering at the 2023 Tour de Vale - If cycling isn't for you, you may like to volunteer instead? To deliver a safe event WheelPower relies on the support of 150 local volunteers to marshal the routes, help at the sign-in tent or support riders at the important water stops. Volunteers would need to donate a couple of hours on Sunday 11 June with full instructions, a high vis jacket and packed lunch supplied. Please contact info@tourdevale.com or call 01296 395995 to find out more.

WheelPower can be found on all channels so please do tag us into your posts using the following: @wheelchairsport (Facebook) @wheelpower (twitter) @tourdevale (Instagram)



AYLESBURY BULLION COMPANY
The Family Of Jewellers



Jewellery designed and produced to your specifications, or choose from our extensive range of new, secondhand and antique pieces.

- Diamond merchants (certified stones always available)
 - Antique restorations
 - Hand engraving
 - Valuations: insurance and probate (carried out on the premises)
 - Insurance claims advisors
 - Complete repair service
- Servicing of Rolex, Tag, Omega, Raymond Weil, Gucci etc.
Batteries fitted and waterproof testing carried out on the premises.
- Top prices paid in cash for antique and modern jewellery, watches (especially Rolex), coins, gold, silver, platinum and scrap precious metals.
Part exchange available.



11a High Street, Aylesbury, Bucks, HP20 1SH

Tel: 01296 423198

www.aylesburybullion.co.uk

MYLES GREEN

Exterior & Interior Painter & Decorator
free estimates, no vat, over 30 years experience



Watermead Resident

01296 330539 / 07976 257323

Ian Whittome Grasscutting Service

Mowing
Strimming
Scarifying
Lawn treatments
Regular or one-off cuts

(01296) 68 23 61

07885 031 431



Update from the Cubs of 12th Aylesbury (1st Buckingham Park)

The 12th Aylesbury (1st Buckingham Park) Cubs meet at the Village Hall in the Piazza in Watermead every Tuesday evening between 6:30 and 8:00 pm. In February we had a wonderful camp at the 9th Aylesbury hut where the cubs made fire and cooked a sausage and burger dinner on that very fire. They peeled potatoes and carrots for their dinner as well. They learnt how to use an axe and saw to provide wood for the fire and also built catapults. We had a dancing hour followed by the Jungle Book movie before we fell asleep.

Staying true to our scouting tradition, we 'did our bit' in the community by planting 1,000 hedges and trees around the newly opened Buckingham Park/Berryfields Greenway one morning.

In March our cubs took part in the Endurance 10K walk up and down the Chiltern Hills and finished in 3 hours. It was an endurance event for me but really a "cake walk" for them. We enjoyed listening to songs while training for our endurance

event on our community greenways. Their favourite tune is "I am a Barbie girl". Go figure!

Whenever we introduced the subject of tying knots they struggled and weren't interested. We then let their imaginations run wild with some poles and ropes and asked them to build their own shelters with no instructions. Each pack had different interpretations of their surrounding resources, a simple village hall with chairs and their own jackets. But they built wonderfully quirky shelters for themselves which barely held up under the thunderstorm and rain that came. At the next session they had some instructions and built better tents but towards the end, after having learnt a thing or two, asked to be taught how to tie better knots. Mission accomplished!

Keeping to our Jungle book theme of the year we learnt about animal habitats and also made beautiful jungle photo frames. The highlight of the spring term was when

a yoga teacher taught our cubs yoga and towards the end of the session we all could feel the energy shift from hyper to serene. Of course we also had a session where we made chocolate eggs and we can all guess how energy levels were throughout and after that session.

We also took part in the St Georges Day parade in Aylesbury town square and had a fun time listening to the legend and watching the parade.

We recently celebrated International Dance Day in style with the cubs learning to dance to an African song and a smashing Bollywood number. We are grateful for the adults who volunteer helping the cubs appreciate and enjoy various activities and cultures. Currently we have a waiting list for cubs, but please do get in touch about volunteering or for joining the waiting list.

Akela and the Cub Leader Team
12th Aylesbury (1st Buckingham Park Cubs)
buckpark.cubs@12thaylesbury-scouts.org.uk



SPRING PROMOTION

CHOOSE FROM £1,000 OFF YOUR NEW KITCHEN OR £1,000 OFF A SIEMENS APPLIANCE PACK.

Summer is just around the corner, and it won't last long (just like these incredible deals) so don't wait around to get started.

Offer valid on all orders placed by 31st May 2023; minimum spend £15,000 (excluding installation, wider renovation, electrics, plumbing, plastering, additional lighting or decorating work not included); Siemens offer valid on promotion pack only.

01844 279 900 · hello@rkiltd.co.uk · ridgewayinteriors.co.uk
Unit 8 Rycote Lane Farm · Rycote Lane · Thame OX9 2NZ



QUALITY KITCHENS AT A PRICE YOU'LL LOVE AT THE HEART OF THE CHILTERN

What's on

...around Watermead

May

1st	Bank Holiday	
6th	King Charles' Coronation	
8th	Bank Holiday	
17th	Watermead Pub Lunch	The Watermead Inn. 12.30pm
18th	Annual Parish Meeting of Watermead	Village Hall, 7pm
18th	Annual Meeting of Watermead Parish Council	Village Hall, 7.30pm
28th	Larks by the Lake	Balloon Meadow, 12.30pm
29th	Bank Holiday	

June

15th	Watermead Parish Council Meeting	Village Hall, 7:30pm
21st	Watermead Pub Lunch	The Watermead Inn. 12.30pm
28th	Florence Nightingale Hospice Walk of Life	(Details TBC)

July

9th	Watermead Open Gardens	The Watermead Inn. 12.30pm
19th	Watermead Pub Lunch	Village Hall, 7:30pm
20th	Watermead Parish Council Meeting	

August

16th	Watermead Pub Lunch	The Watermead Inn. 12.30pm
28th	Bank Holiday	

Our regulars in the Village Hall...

Parish Council
3rd Thursday of the month
(excluding August & December)
Public meeting - 7.30pm
Council meeting - 8pm

Footsteps Pre-School
Monday - Friday 7.30am to 2pm
Closes 12.30pm Tuesdays
07743 871369
watermead@footsteps-nursery.co.uk

Crafty Chicks
Scrapbooking/card making any craft of your choice
4th Friday of the month from 6.30pm
Contact Kate 07952 477702
kate@boltweb.net

Aylesbury & District Philatelic Society
Second Wednesday of the month
7.30 - 10pm
Peter Barnes 612913

Kumon Maths
Monday & Thursday
2.30 - 6pm
Susan Jones 747469

Jo Jingles
Tuesdays - Music & Movement
1.30 - 2.15pm 18 months upwards
2.30 - 3.05pm 6 months to walking (approx 18 months)
Debbie Bird 625599

Castielli Dance School
(for children) Monday 6-7.30pm
Janet Castielli 433956
www.luv2dance.co.uk

Bring Your Own Crafts Afternoon
Every Wednesday 2.30-5.30pm
Judith Muston
Noreen 01296 395211

Inkstampshare Paper Craft Class
07952 477702
kate@boltweb.net
Inkstampshare.ink

12th Aylesbury
(1st Buckingham Park Cubs)
Tuesdays 6.30pm - 8pm (term times only)
12thaylesbury-scouts.org.uk
George Leaver
buckpark.cubs@12thaylesbury-scouts.org.uk

View from Westminster



Summer is almost upon us, a wonderful time to be outside and enjoy the beautiful natural environment we have right on our doorstep. Watermead is in its own lovely setting, and is the ideal place to spend lazy days and long sunny evenings. While the sun did not shine on Coronation day, the showers could not dampen the enthusiasm locally and across the country for the spectacular events in

Westminster Abbey, the marvellous processions, and the celebrations here in Buckinghamshire. It was a real pleasure to join some of the events taking place locally, with so many people gathering for parties with their families, friends and neighbours. This sense of community and belonging is a great strength of our democracy; the King is above party politics and acts as a unifying force for us all. I was privileged to meet Their Majesties at a reception in the House of Commons shortly before the Coronation, as MPs conveyed the best wishes of all our constituents for a long and happy reign.

As I said in my last article for Village View, as a country we face some serious challenges, with many of them fuelled by global events over which we have little control. I am pleased though that the economic indicators are heading in the right direction, with inflation set to fall considerably. The government has rightly assisted with targeted support for our most vulnerable local residents, and this will continue over the coming months.

Locally, I remain determined to see the regeneration of Aylesbury

succeed so that our county town can flourish long into the future. Aylesbury already has much to offer with great restaurants and bars and a beautiful historic quarter, but it needs help to make it a place where people want to live, work, visit and invest. I will continue to press ministers for levelling up funding to support this endeavour.

I am extremely pleased to report that following my intervention with ministers, I have managed to secure additional funding to keep Buckinghamshire Fire's Urban Search and Rescue Service. This vital, awarding-winning team was under threat but working with the Government, additional funds have been secured to keep the service until at least 2025.

If you would like to raise any issues with me, you can contact me at rob.butler.mp@parliament.uk

Robert Butler MP



Kindness doesn't cost a thing, yet it's the richest gift you can give.

Are you looking for a venue? Watermead Village Hall is the ideal venue for young children's birthday parties, meetings and christenings, etc. Or are you an organisation looking for a regular venue? If so, to book the Village Hall or the Bandstand please contact Noreen Shardlow on 01296 395211 / 792137

Advertise in the Village View 50% discount for Watermead residents

Resident Rates - 1/4 page - £25, 1/2 page - £50, full page - £100
Non-resident Rates - 1/4 page - £50, 1/2 page - £100, full page - £200
Colour is extra - £30 - 1/4, £60 - 1/2, £120 - full page.

Resident advertisers committing to 4 issues will be eligible for 10% discount subject to paying the invoice within 30 days of receiving it. Non-resident advertisers committing to 4 issues will be eligible for a 20% discount subject to paying the invoice within 30 days of receiving it. Special prices apply for back, inside front and inside back cover. Please call the Advertising Manager for further details.

Advertising Manager	Stuart Mackay	Tel: 07521 725231	srmackay@hotmail.com
Editor	Mary Singleton	Tel: 428569	mary.singleton@watermead-pc.gov.uk
Graphic Designer	Rachel Seago	Tel: 712545	villageviewwatermead@gmail.com
Distribution Manager	Dot Toler	Tel: 432405	dot_toler@hotmail.com

Read by over 1,200 homes. 3 month shelf life!

Creating or modifying the adverts will also be charged for separately. Please arrange advertisements at least 4 weeks prior to publication date and send to the Advertising Manager (see above). Publication dates are subject to change depending on local events at time of publication. Payment of advertising space is required in advance of publication - advertisers will be invoiced accordingly and must pay the invoice within 30 days of receipt. If you have any suggestions for content/articles please contact any member of the team above. Designed by Rachel Seago Designs. Published by Watermead Parish Council. 2023 © The Village View is also uploaded onto our website: www.watermead-pc.gov.uk/villageview.

PUBLICATION DATES
2024

AUTUMN
2nd September

WINTER
25th November

SPRING
9th March

SUMMER
7th June

King Charles III Quiz



- On what date was King Charles III born?
- What is his full name?
- How old was King Charles when he became Prince of Wales?
- Charles was the first member of the Royal Family to obtain a degree, but at which university did he study?
- What subjects did he study?
- What year did Charles III enrol in the Royal Navy?
- When did Charles marry 'The People's Princess', Diana Spencer?
- King Charles founded a charitable organisation that promotes education and career opportunities for young people - what's it called?
- What was the name of the children's book published by Charles in 1980 depicting an area near Balmoral?
- In what year did Charles take his seat in the House of Lords?
- In what year did Charles marry Camilla Parker-Bowles?
- What are the names of Charles' five grandchildren?
- King Charles plays three instruments. What are they?
- Highgrove house is surrounded by how many acres of organic land?
- What is the name of the organic food brand that King Charles founded?
- What is King Charles III's favourite flower?
- What is the oldest and largest occupied palace in the world?
- King Charles III became the oldest person to accede to the British throne at what age?
- How many parts does a coronation service fall into?
- What was the first documented coronation at Westminster Abbey?

Answers on page 17



AYLESBURY GLAZING REPAIRS

DOUBLE GLAZED UNIT REPLACEMENT SPECIALISTS

Misted or Condensated Windows
Broken Glass Panels
Window Repairs
Handles, Locks and Hinges
Catflaps in Glass or Panel

Get in touch for a free quote!

Call 07889 730995

glazingrepairs@hotmail.com www.aylesburyglazing.com

GIVING YOU A CLEARER VIEW



HOLY COW



WE ARE OPEN!!

Handmade, fairtrade, unique
Gifts for him, her, them, home and me!
Now stocking loose-leaf tea in earth-friendly
packaging

Use code **WVV10%** for 10% off first online order!

COVID-safe click & collect or Free Local Delivery

www.holycowhome.co.uk

6 Cambridge Street, Aylesbury, HP20 1RS - T 01296 640507

Howse Electrical Part P Approved Electrician

rewires
fuse board replacement
security lighting
fault finding
extra sockets and repairs
free quotation
and friendly advice

Reliable
Reasonable
Fully Insured

07878 235185

grahamhowse@hotmail.com

Watermead resident
for 20 years



APK Building Services

Maintenance
General Building
Brickwork
Roofing & Repairs
Guttering & Clearance
Landscape & Fencing
Groundworks & Drainage
BASED IN WATERMEAD



07971 729540

apkingbuilding@gmail.com

Find us on Facebook



The leading garage door specialist is in your area!

ABR Garage doors have over 25 years experience supplying, installing and repairing garage doors in the High Wycombe area. As a local independent family firm we are proud to be known for our exceptional quality driven and reliable customer service.

- Hormann sectional garage doors
- Up and over garage doors
- Garage door repairs
- Roller garage doors
- Side-hinged garage doors



HIGH WYCOMBE
01494 459257
stuart@abrdors.co.uk

AYLESBURY
01296 397271
tom@abrdors.co.uk
www.abrdors.co.uk

Watermead Piscatorials

It's been a cold and wet spring with water levels remaining high which meant that the planned working party in April had to be postponed. The weather is looking a little better now and the fishing has improved as shown in the picture of our Secretary Don catching some nice Bream (8lb) and Tench as well as some smaller Roach and Rudd. This bodes well for the summer fishing. On that subject our Bailiff, Steve, has offered to run some fishing competitions this summer. They will all be on a Sunday, 07.30 Draw; the dates are 4th June, 2nd July and 6th August, so we shall see how they go. You must be a member to enter. So good luck all.

The AGM was again poorly attended with just 3 members and 6 officials turning up which was disappointing. We really need your support. Some key points from the meeting were:

- Chairman Pete stepped down and Martin was elected new Chairman. Pete was thanked for all his years of support over the past 20 years. He was awarded an Honorary life membership.
- Martin stepped down as working party liaison officer and Michael stepped up to take this position.
- This has left a space for a volunteer to join us as part of the working party committee. Let me know if you are interested.
- An increase in membership cost was voted in. Membership is £30 per year.

We have, so far this year, had to cancel two working parties, the one on the 2nd April was due to flooding, and the one on 16th April was cancelled as no one turned up! Both of these will be rearranged. We really need people to volunteer to help maintain the lake. There are two working parties already arranged for Sunday 28th May from 8am to 1pm and on Wednesday 31st May from 5 to 8pm on the small lake at Watermead. You do not need to be a member to help out on the working parties.

For any information about events, you can find us on Facebook "Watermead Piscatorials" and for Membership please contact our Secretary Don Smith at don.smith33@hotmail.co.uk.

Membership runs from 1st June to 30th May. Guest tickets are also available for fishing the small lake. Contact our bailiff, Steve, on 07843 787918 (members only).

Martin Mynott (Chairman)
Michael Burrige (Work Party Officer)



Don't give thieves shed loads of opportunities!

Opportunist thieves identify sheds as easy pickings because they are unprotected and lack basic security measures. The buildings often contain property that can be sold on or implements that can be used to force entry into the owner's home. Many people fall short on basic security of their sheds. Please make sure you:

- Keep your shed in good condition
- Fit a closed shackle padlock to the door
- Fittings should be bolted through the door and any screws concealed
- It is easy to unscrew ironmongery, steal contents and in some cases replace the screws to make it look as if it has not been tampered with
- By using tamper proof screws or coach bolts, together with a good quality pad bar or hasp and staple and close shackled padlock, the shed owner will make it harder for the would-be thief.
- Bond any window glass in with mastic to prevent easy removal. Fit grilles or mesh to windows to slow down the thief.
- Ensure all equipment and tools are locked away when not in use.

- Install a shed alarm
- Post-code or mark all property such as lawnmowers, bikes and tools with ultra-violet pens, forensic marking such as Selecta DNA, Smartwater or engravers.
- Install security lighting as a deterrent, and plants such as thorny shrubs to act as a barrier at potential access points.
- If building a shed, put it where it is most visible to you and neighbours.
- Ensure ladders are locked to a secure fixture in the shed or garage so they can't be used to reach top floor windows.
- Chain large items such as bicycles together making it more difficult for a thief to carry away.
- Fit a wire cage inside the shed where more expensive items can be locked away.

No thief wants to hang about longer than they have to so delay the time it will take them to get their hands on your tools.



Guide dogs

Would you know what it meant if you saw a Guide Dog with either a red and white or a blue and white harness flash? The photo on the left shows Cooper with a red and white flash on his harness. This indicates that the Guide Dog Owner has hearing loss as well as a visual impairment.

The photo on the right shows working Guide Dog Hetty with a blue and white flash on her harness. Blue and white indicates that Hetty is also a seizure alert dog.

AVOCET
DECORATING

ANDY DALE
Painter & Decorator

Interior & exterior work
FREE ESTIMATES

T: 07980 684919
E: andy@avocetdecorating.co.uk

New photo ID requirements announced for local and national elections

From 4th May 2023, voters in England will need to show photo ID to vote at polling stations in some elections. This will apply to:

- Local elections
- Police and Crime Commissioner elections
- UK parliamentary by-elections
- Recall petitions

From October 2023 it will also apply to UK General elections. The Electoral Commission's website lists the accepted forms of photo ID. People who do not have an accepted photo ID can apply for a free voter ID document, which is known as a Voter Authority Certificate. Applicants will need to provide their name, address, date of birth, national insurance number and a recent digital photo of themselves.

For people registered to vote by post, no photo ID will be required. This is because postal voting requires other identification checks, such as signature and date of birth verification.

Nick Graham, Buckinghamshire Council's Director of Legal & Democratic Services and Returning Officer, said: "Although we don't have local elections in Buckinghamshire this May, you will need to show accepted photo ID to vote in polling stations in any upcoming local referendums and elections, and for national elections from 4 May.

If you haven't done so already, make sure you are registered to vote. The easiest way to register to vote is by visiting GOV.UK.

You don't have to be Bear Grylls to volunteer.

Young people are the future... They're the doers, the give-it a-goers

As a volunteer you can put your skills to good use and learn new ones, while giving something back to your local community.

With full support and training, you can volunteer in a way that suits you.

Come and be the difference.

Contact us now: gsl@12thaylesbury-scouts.org.uk

Walk, camp & sleep under the stars
Experience mile after mile of natural beauty

Join our team of intrepid explorers for the trip of a lifetime

A Saharan Adventure for Florence Nightingale Hospice Charity

14 - 19 March 2024

For more information contact Bill Richards at billrichards@fnhospice.org.uk or call 01296 429975

www.fnhospice.org.uk/saharanadventure

We create beautiful flower designs using luxury fresh flowers delivered for every occasion. We specialise in gift bouquets, wedding and funeral flowers - all hand made with love.

To order visit: www.theflowerhouse.me or call: 07515 359982 email: kerrie@me.com

Hand delivered flowers to Aylesbury and surrounding villages Based in Watermead

Free delivery for Watermead residents Promotion code 'FREEDELIVERY'

DW SPARKTECH.LTD.

Please call : 07747562772
01296 435417
dw@dwsparkech.com
24H emergency call out : 07747562772
Watermead based Electrician.

ELECTRICAL SOLUTIONS. www.dwsparkech.com

All electrical installation, maintenance and inspection and testing work undertaken.

Fully registered and insured domestic and commercial electrical engineers.

Quainton Carpets

The Natural choice

- All flooring works undertaken
- Commercial & Domestic work
- Insurance work



Office: 01296 655408
Mobile: 07747 013521 • Website: Quaintoncarpets.co.uk

Places to Eat

THE FIVE ELMS

4 Stockaway, Weedon, Aylesbury, Bucks HP22 4NL

Email: fiveelmsweedon@gmail.com

Phone: 01296 256057

This pub/restaurant is under new management and is recommended. Andrew has had a career in hotels and restaurants for the past 20 years, managing in some of the country's finest hotels. His business partner, Tom Moody, has been cooking for 17 years and his career has taken him to work in Michelin starred establishments in France, Spain and England. He most recently became Head Chef in 2019 at the Minster Mill hotel in Minster Lovell in the Cotswolds where he achieved Three AA Rosettes. He has also taken part in various cooking competitions including making the finals of the prestigious Roux Scholarship and Semi Finals of Masterchef the Professionals.

Hours of opening are limited to Monday evening offering of various Pizzas to eat in or take-away, drinks only on a Wednesday, there is a set lunch available as well as an 'a la carte' menu for dinner on Thursday, Friday and Saturday, lunch only on Sundays. Booking is essential.

THE LIONS OF BLEDLow

Church End, Bledlow HP27 9PE

Email: info@thelionsofbledlow.co.uk

Phone: 01844 343345

Website: thelionsofbledlow.co.uk/walking/

An unspoiled, traditional 16th century Free House located at the foot of the Chilterns which offers both indoor and outdoor dining. The Lions of Bledlow is the perfect base for a walk through the Chiltern Hills AONB or the Lyde Gardens. Dogs are always welcome. Information on their website will provide you with all the details you need to plan your walk.



ADROIT SERVICES
AMAZING BATHROOMS

Steamy Shower or Bubbly Bath?

Whatever your preference, with our expert team your new bathroom installation will be a refreshing experience!

From your initial quotation, to finalising your spec in our showroom, ordering all components ready for fitting and our two-year workmanship guarantee - we install your bathroom as if it were our own.

Established in 1989, Adroit Services are a second-generation family business. We are very proud of our team and our Trading Standards Approved 5-star reputation. Check out our independent reviews.



www.adroit.services
01296 489993

Book review

Douglas Murray: BOSIE

Not the first – and probably not the last – biography of Lord Alfred Douglas, Oscar Wilde's toyboy chum. Bosie has been accurately portrayed in all the movies: lazy, spoiled and petulant. But he loyally visited Oscar every day while he was awaiting trial for sexual offences after the collapse of his libel case against Bosie's father, the Marquess of Queensberry.

Breaking an oath to his wife that he would not see Bosie again, Wilde was reunited with him in Rouen after his release from prison. They lived for some months in a rented villa near Naples but were forced to separate when Mrs Wilde (reverting to her maiden name Constance Holland) and Bosie's mother withdrew their financial support.

Bosie didn't see Wilde during his last days in Paris in 1900 but he paid for Oscar's funeral. Less than two years later he married Olive, a fellow poet. They had a son who ended up in a mental hospital and, although the marriage failed, they remained friends and confidants until Olive's death in Hove in 1944. Bosie died, also in Sussex, a year later.

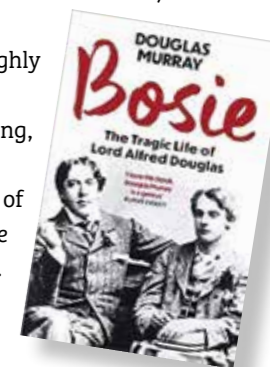
Bosie had never let go of the past. He wrote several books about his relationship with Wilde and got involved in a long series of libel cases. He edited a series of short-lived literary magazines and 'discovered' some notable poets including Siegfried Sassoon and Rupert Brooke. He took against the emerging modern poetry after the Great War and especially hated T.S. Eliot, never missing

a chance to slag him off in letters to, among others, Bernard Shaw and Marie Stopes!

Bosie's latest biographer argues the case for him to be recognized as a poet of some significance. Several critics of the time (and again when he was republished in the 1950s) ranked Alfred Douglas's sonnets alongside Shakespeare's but I don't think he's that highly rated today.

Famously bitchy and endlessly self-pitying, Alfred Douglas was neither lovable nor likeable. He gets co-star status in the story of Oscar Wilde, a literary titan, when really he should have been no more than a footnote.

David Gee



Answers to Tea Break Quiz on page 11

1. 14 November 1948, 2. Charles Philip Arthur George, 3. Nine, 4. Trinity College, Cambridge, 5. Archaeology, Anthropology and History, 6. 1971, 7. 29th July 1981, 8. The Prince's Trust, 9. The Old Man of Lochnagar, 10. 1970, 11. 8th April 2005, 12. George, Charlotte, Louis, Archie and Lilibet, 13. Guitar, piano and the cello, 14. 900 acres, 15. Duchy Originals, 16. Delphiniums, 17. Windsor Castle, 18. 73, 19. The coronation falls into six parts: the recognition, the oath, the anointing, the investiture (which includes the crowning), the enthronement and the homage. 20. William the Conqueror on 25th December 1066

Early bird tickets – Travel for £1

Until 31 August 2023 holders of the Bucks Disabled and Older Person Bus Passes can travel **before 9am Mondays to Fridays** for a reduced single fare of £1 on journeys starting in Buckinghamshire.

For details visit:

buckinghamshire.gov.uk/public-transport





King Charles III joined residents of The Falcon to celebrate his coronation.

This is Beau and Reu of The Falcon, 'Kings of the Road' if you will. They are King Charles Cavaliers who also enjoyed the coronation party. Sent in by Kim Bourke-Smith.

Residents having a great time in Osprey Walk.

Revellers in The Osprey hide behind masks of the Royal family.



Annis Lewis of 45 Kestrel Way sent in these photos of their street party in Kestrel Way.

Watermead celebrates the coronation



Lots of people decorated their houses and gardens with Coronation bunting, Union Flags. Red white and blue balloons and lots of other relevant decorations to celebrate the Coronation of King Charles III. This one is in Osprey Walk and the yellow pansies contrast well.



The Avocet Arms was established during the first lockdown of the Covid pandemic and the residents at the end of Avocet Way have continued to meet there on a regular basis. The Coronation was a very good excuse!



Easy coronation recipes

THE ORIGINS OF CORONATION CHICKEN

We've taken classic coronation chicken and turned it into a pie filling with added spinach and a bit of texture and sweetness from dried mango. The traditional sandwich filling was served at the Queen's coronation lunch (hence the name), but it goes back even further, as it was based on a dish served at George V's Jubilee.

www.bbcgoodfood.com/recipes

EASY CORONATION CHICKEN

Make a classic Coronation Chicken filling to serve with jacket potatoes or in sandwiches and salads. It's an excellent way to use up leftover chicken after a roast.

Preparation and cooking time:
Prep: 5 mins, No cook
Serves: 4-6

Ingredients:

6 tbsp Hellmann's Real Mayonnaise
2-3 tsp mild curry powder, to taste
½ tsp ground cinnamon
2 tbsp mango chutney
1-3 tbsp sultanas, or to taste
500g shredded cooked chicken

Method:

1. Mix the Hellmann's Real Mayonnaise, curry powder, cinnamon, chutney and sultanas together and season with black pepper.
2. Add the shredded chicken and stir to coat in the sauce. Stir in 2 tbsp water to loosen if needed, then season and serve as desired.

CORONATION CHICKEN PIE

Serve this gently spiced chicken pie warm or cold – it's delicious either way. While it looks impressive for a party or picnic, it's easy to make using ready-made puff pastry.
Prep: 45 mins
Cook: 1 hr 20 mins plus at least a few hrs marinating, cooling and chilling.

Ingredients

6 boneless, skinless chicken thighs
1 tsp ground turmeric
large piece ginger, peeled and



finely grated
1 tsp cumin seeds
3 tbsp korma curry paste
400ml can coconut milk
400g spinach
60g dried mango, chopped into chunks
50g raisins
500g block puff pastry
plain flour, for dusting
1 egg, beaten
a mixture of black onion seeds, flaked almonds and cumin seeds, for sprinkling
small bunch of coriander, chopped
mango chutney, to serve (optional)

Method

1. Tip the chicken into a bowl with the turmeric, ginger, cumin seeds, korma paste and pinch of salt. Mix well. Leave to marinate for a few hours, or overnight (if marinating overnight, cover and chill).
2. Tip the marinated chicken into a medium saucepan and pour over the coconut milk. Stir, bring to a simmer over a low heat and cook for 40 mins until very tender (it should be falling apart). Leave to cool.
3. Meanwhile, tip the spinach into a colander and pour over a kettleful of boiled water until wilted. Leave to cool, then squeeze out as much water as you can and roughly chop. Roughly shred the chicken into the sauce in the pan, then stir through the chopped spinach, dried mango and raisins to make a loose filling. Can be made a day ahead.
4. Roughly halve the puff

pastry, but make sure one half is slightly bigger. Roll the smaller half out onto a floured surface to a circle about 25cm in diameter, then transfer to a baking tray. Pile the filling into the middle of the pastry circle, leaving a border around the edge. Brush the border with a little of the beaten egg. Roll out the remaining pastry half to a circle about 30cm in diameter. Drape this over the filling, pressing or crimping the edges to seal. Chill for at least 20 mins. At this stage, the pie can be covered and kept chilled overnight.

5. Heat the oven to 200C/180C fan/gas 6. Gently score a criss-cross pattern over the top of the pie using a sharp knife, then brush all over with more of the beaten egg. Bake for 20 mins, then remove from the oven, brush with the rest of the egg, and sprinkle



over the seed and almond mixture and a little sea salt. Bake for 20 mins more, or until the pie is deep golden and the almonds are toasted. While the pie bakes, combine the dressing ingredients.
6. Leave the pie to cool, then cut into wedges and serve with the yogurt dressing and some chutney, if using.

SUMMER PUDDING TRIFLES

These cute summer trifles combine two raspberry classics and can be made several hours ahead and kept in the fridge
Prep: 20 mins Serves 4

Ingredients:

600g raspberries
50g golden caster sugar
1 madeira loaf (about 300g/10oz)
227ml tub clotted cream
icing sugar, to serve

Method:

1. Set half the raspberries aside. In a bowl, roughly mash the remaining raspberries with the sugar. Cut the madeira loaf into 12 slices, then use a round cutter to cut out rounds of the cake to fit 4 serving glasses. Beat the clotted cream until slightly thickened.
2. Layer up the trifles in glasses starting with a slice of cake, then some cream and some mashed raspberries. After the final slice of cake, spread over some cream and top with whole raspberries. The trifles can be kept in the fridge for a couple of hours. Dust with a little icing sugar before serving.



MASON

PLUMBING & HEATING

WWW.MASONPLUMBING.CO.UK






With the rising costs of heating our homes, it has never been so important to make sure our boilers are running at maximum efficiency or upgrading our older boilers to a more efficient model.

Why choose Mason Plumbing & Heating to install your new highly efficient A rated boiler?

- ✓ Gas Safe registered engineers
- ✓ Worcester Bosch Accredited
- ✓ Extended Guarantees of up to 12 years
- ✓ Finance options available
- ✓ Hundreds of online reviews

Need your boiler serviced?

Scan here to book online



Or call the office on **01296 706008**



WWW.MASONPLUMBING.CO.UK | 01296 706008





Acorn Kitchens & Bathrooms Ltd

Luxurious kitchens and bathrooms in Aylesbury and surrounding areas

- Fully insured
- Kitchens and bathrooms
- Plumbing

- Design, fitting and installation service
- All tiling, flooring and decorating
- Showers, en-suites and cloakrooms

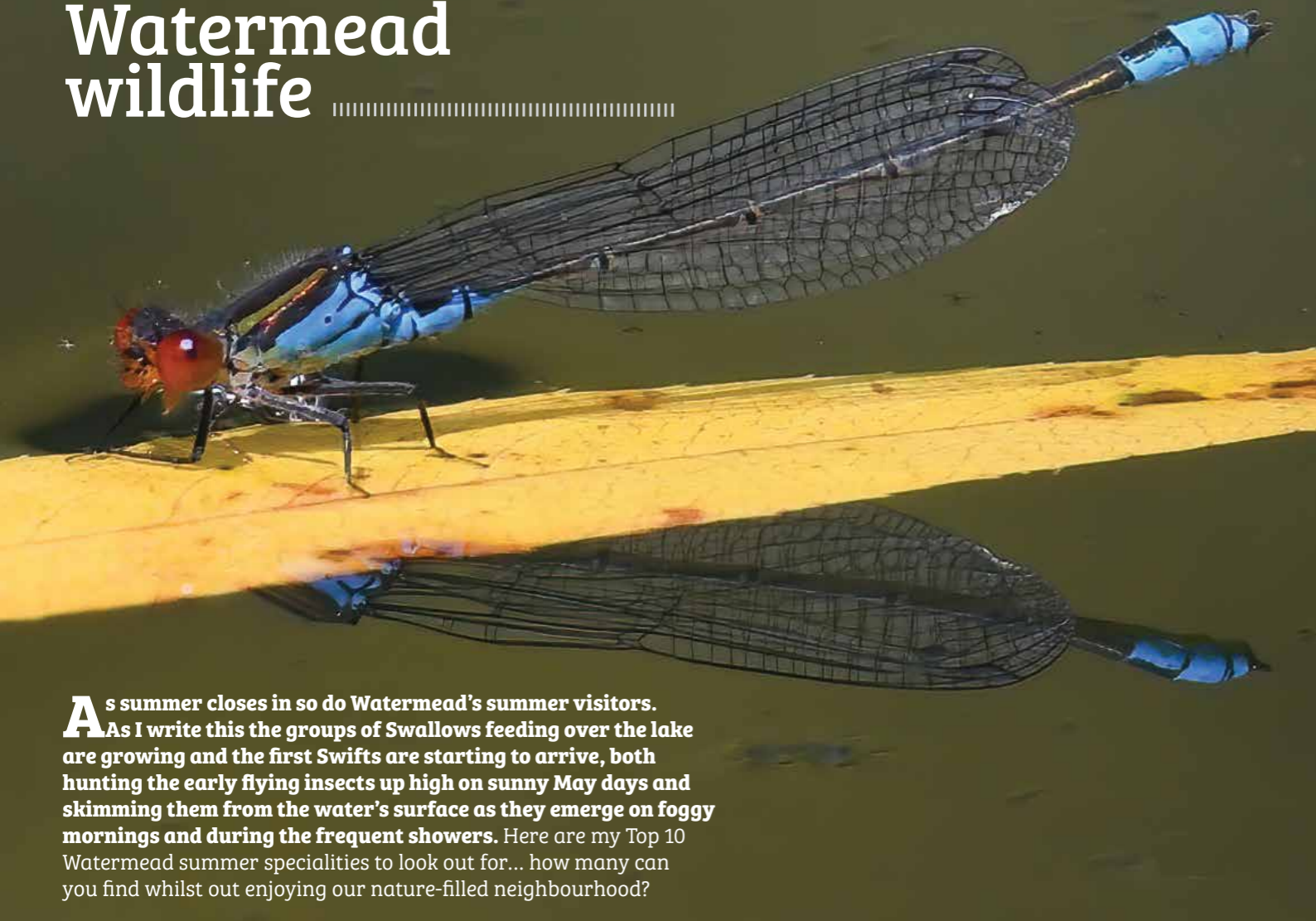
FREE FRIENDLY ADVICE AND ESTIMATES

We also offer a fit only service and undertake general carpentry and minor alterations



01296 586342 / 077764 576090
info@acornkitchensbathroomsLtd.com
www.acornkitchensbathroomsLtd.com

Watermead wildlife



As summer closes in so do Watermead's summer visitors. As I write this the groups of Swallows feeding over the lake are growing and the first Swifts are starting to arrive, both hunting the early flying insects up high on sunny May days and skimming them from the water's surface as they emerge on foggy mornings and during the frequent showers. Here are my Top 10 Watermead summer specialities to look out for... how many can you find whilst out enjoying our nature-filled neighbourhood?

COMMON BLUE BUTTERFLY (below)

Although the Common Blue is the most widespread blue butterfly in Britain, it isn't often found around urban environments due to lack of suitable flora. Watermead is an exception though, as we have increasing patches of Common Bird's-foot Trefoil growing year-on-year in unown areas, so an increasing population of Common Blues as this is the preferred foodplant of the caterpillars. You can separate the Common Blue from our more regular Holly Blue by its preference for grassland over hedgerows, smaller size, and distinctly patterned rather than mostly silvery-white underwing. The best spot to find Common



Blues is the large patch of low-growing yellow flowers on the west side of the large lake – this is the Bird's-foot Trefoil on which the imagos (adult butterflies) lay their eggs.

MARBLLED WHITE BUTTERFLY (right)

This medium-sized, distinctive and very attractive butterfly cannot be mistaken for any other species, with its beautiful black and white lace patterned wings it can be seen fluttering through long grasses where it seeks out the purple flowers of knapweed or thistle from which it nectars. In Watermead we have some small but perfect pieces of habitat for Marbled White namely the strip of meadow bordering the River Thames and the old cricket pitch, so look out for them here, particularly during July which is their peak flight season.

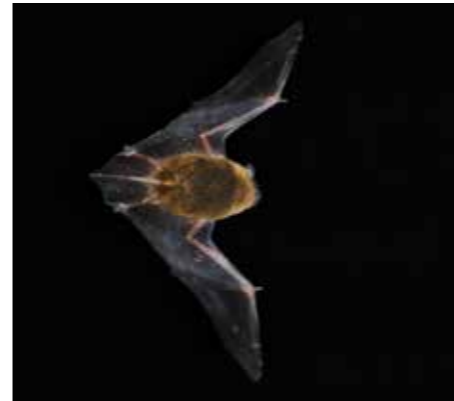


NOCTULE BAT (right)

Britain's largest bat, the Noctule has a wingspan of up to 43cm. It has a strong, fast, direct flight at about tree-top height and dives or loops down to catch moths and other insects below it - it could be confused with a bird such as a Swift on



initial observation due to its size and flight characteristics. We are lucky to have a healthy population of Noctules in Watermead and on warm summer evenings good numbers can easily be seen hunting over the old cricket pitch and the balloon field in particular.



COMMON PIPISTRELLE BAT (above)

Britain's smallest and most common bat, the Pipistrelle only weighs between 3-8g. They may be tiny but they have a huge appetite, easily feeding on around 3,000 insects per night. They have an erratic, twisting/turning flight but often following hedgerows or woodland edges, repeating the same route over and over and looping round to catch any flying insect it senses with its echo-location. On a summer's evening in Watermead the air is often alive with Pipistrelles hunting.

HOBBY (below)

Somewhat half-way between a Peregrine and Kestrel, this medium-sized falcon visits Watermead to hunt during the summer. They coincide their arrival back from Africa with that of the bulk of Swallows and House Martins, on which they prey, then as the weather warms-up they feast on dragonflies as they emerge. The Hobby is truly a master of the air, using both immense speed and agility to catch its very nimble choice of prey.



COMMON TERN (left)

Though similar and not far related to gulls, terns are daintier and more elegant. Common Terns visit Watermead throughout the summer to feed on small fish and aquatic insects, and can be easily identified by their slim pointed wings, swallow-like tail streamers, and buoyant flight. During the latter half of summer adults that breed at other nearby lakes and reservoirs bring their youngsters to Watermead to feed and teach them to fish.



GRASS SNAKE (above)

Watermead is one of the best locations I know for seeing Grass Snakes. With some individuals here being well over a metre long but also many tiny young specimens being seen as we have the perfect habitat for them to breed. Grass Snakes are non-venomous and completely harmless to humans; they feed on invertebrates, amphibians and small fish, and so can often be seen swimming in the lake or the River Thames. The best spots to look are around the vegetated margins on the west side of the small lake.



WILLOW EMERALD DAMSELFLY (main shot)

A recent colonist of the UK, first settling in south-east Suffolk in 2009, the Willow Emerald is still quite scarce, especially this far west and has only been recorded at a handful of sites in Buckinghamshire. Watermead happens to be a stronghold for this very delicate damselfly due to having ideal habitat – it's very hard to spot, being green in colour and spending the majority of time perched on foliage overhanging water, but the easiest spot to find them is on willows overhanging the channel linking the River Thames to the large lake at the opening in the wood at the north end.

SMALL RED-EYED DAMSELFLY (above)

Another recent colonist, first found in the UK on the Essex coast in 2009, Watermead holds good numbers of Small Red-eyed Damselfly alongside the regular (Large) Red-eyed Damselfly, from which it can be separated by its diminutive size and slightly upturned rear abdomen. The easiest area to find this tiny damselfly is on the west side of the small lake, though as this species requires floating aquatic vegetation on which to lay its eggs, so the need for clearing Blanket Weed from the small lake to maintain the environment for fishing, means that the population fluctuates year-on-year.

COMMON BISTORT (left)

Somewhat similar in appearance to our native orchids, the beautiful pink Common Bistort grows in wet meadows, and despite its name it isn't actually common at all in our region; in fact according to the National Biodiversity Network, the single plant I discovered at Watermead in 2021 represents only the fourth site it has been recorded in Buckinghamshire in the last 20 years. Unfortunately, on returning to get a better photo in daylight the day after discovering it I found that someone had already picked the flowerhead, and the plant hasn't produced any further flower spikes since, so if you are lucky enough to find Common Bistort flowering in Watermead please don't pick the flowers – let it thrive and leave it for others to enjoy – I'd also love to hear if you find Common Bistort successfully flowering in Watermead once again.



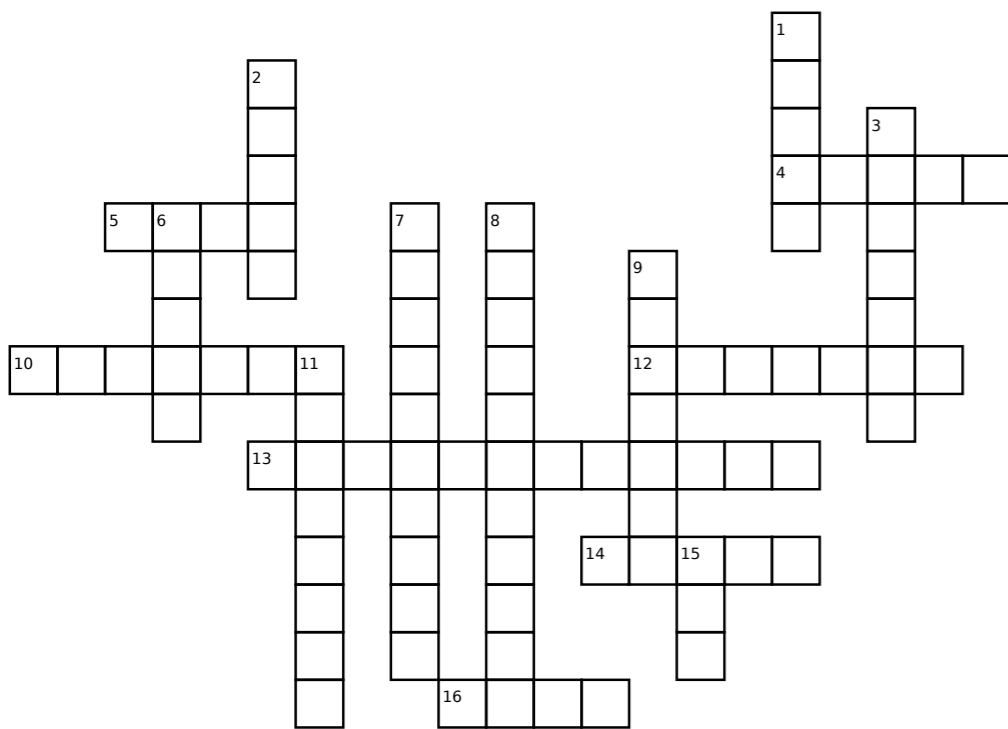
LIGHTENING STRIKES (left)

Taken on my phone, here's one of the recent lighting strikes... viewed from Guillemot flats.



If you'd like to hear about sightings of interesting wildlife or rare species in Watermead as I see them you can follow me on Twitter @DanFWildlife. Also, feel free to contact me if you have any wildlife related queries or if you'd like help identifying something - I'll get back to you asap. Dan Forder

Watermead wildlife crossword



Down:

- 1. Where birds head to escape the cold
- 2. An aquatic mammal
- 3. Our most common duck with a green head
- 6. The mountain range the Siberian Chiffchaff comes from
- 7. A black & white duck with a funky hairdo
- 8. A wading bird with a very long bill
- 9. A cousin of the Golden Plover
- 11. A blooming early sign of spring
- 15. A small deer that lives at Watermead

Across:

- 4. The river that feeds Watermead lake
- 5. This silent swan is the symbol of Watermead
- 10. Trees that overhang the small lake
- 12. A duck with a red head
- 13. Where to find the Watermead Water Rail
- 14. A white member of the heron family
- 16. A tiny duck

See answers on page 26

Avanti
31LAKESIDE, AYLESBURY, HP19 0FX | avanti-salon.co.uk

LOVE IS IN THE HAIR

SPECIALISED IN LADIES & GENTLEMEN'S HAIRDRESSING

CELEBRATING 35 YEARS ON THE PIAZZA



BOOK NOW FOR YOUR FREE CONSULTATION
01296 488138

FREE PARKING
BEAUTIFUL SCENERY



Congratulations!
 Congratulations to our new Parish Councillor, Dan Forder, (our wildlife expert) who was recently married to Harps in a traditional Sikh ceremony at Brent Gurdwara. The newly-weds went on honeymoon to Riviera Maya in Mexico.

Answers to Crossword on page 24

Down:

1. South
 2. Otter
 3. Mallard
 6. Urals
 7. Tufted Duck
 8. Common Snipe
 9. Lapwing
 11. Snowdrop
 15. Roe
- Across:
4. Thame
 5. Mute
 10. Willows
 12. Poochard
 13. Wooden bridge
 14. Egret
 16. Teal

Community spirit and helping each other

Well, there's just one word I can say and that is RAIN! It prevented the 'clear up' day and has already made us two months behind being able to drive heavy compost and equipment down to our plots in the allotment. However, I must say, it is reassuring to see how people pull together when things get hard.

I for one had a knee replacement, which made me extremely frustrated, as I couldn't carry anything to my plot - I just about hobbled there myself. However many of you came to my rescue - Tina and Dianne, Daphne, Charlotte, Paul, Lucia, Jon. Even my neighbours helped me, and they don't even have a plot. Gerry's son Jayden has been helping to weed and water and now helps others; what a keen young man!

What community spirit, you are all stars! I don't know what I would have done without you. I guess I would have had no crops this year if you hadn't helped. Apologies if I have missed some of you out.



- Craft fayre - to sell all our Xmas crafts and goodies.
- Competitions - Biggest Pumpkin, most unusual squash, largest sunflower, best allotment, most improved allotment to mention a few.
- Veg swap day - bring your plugs, vegetables, fruit and swap or buy from others.

- We also have another 'clear up' day, where there is a free bacon or sausage bap (or veggie one) for everyone who helps. Now that's the team spirit

As for the allotments, wow they are looking so much better this year. Everyone has made a supreme effort. New sheds, painted

sheds, bunting, some raised beds which I think must have been measured with a spirit level they are so straight. Mine, of course, will remain eclectic, like me.

Lucia has made many of us beautiful hanging wood signs for our sheds, which look amazing. There are some beautiful hand painted stones all around. Charlotte sat and showed Daphne and I how to crochet, whilst sipping tea on our allotments during our break. Daphne, Tina and Diane helped me organise and decorate the hall for my 60th birthday. What team spirit!

We have some new plot owners, so a warm welcome to them. Don't forget Daphne, Charlotte and Alison have plenty of seeds and plugs to help you on your way. I am sure others have too.

Sadly, Peter and Lisa left at the end of last year; it would be good to still see them at our events or just to pop by for a cuppa. Marion and Roger lost all their rhubarb

in the nasty frost, so they were donated one, hopefully it is surviving.

The joys of being part of an allotment community, far outweigh the rain and pitfalls.

Alison May



Your area is covered by The Wing & District Neighbourhood Policing Team

Charlotte Cottage, 73 Leighton Road, Wing, LU7 ORD

To contact a member of the local team, please email the below email address:

✉ greatbrickhillwingivinghoenht@thamesvalley.police.uk

To report a non-urgent crime you can visit

www.thamesvalley.police.uk

Or

☎ Telephone : 101 to speak with an operator

In the event of an emergency always dial 999

We supply & Install:
 • Loft ladders & loft hatches
 • Boarding, lighting & insulation

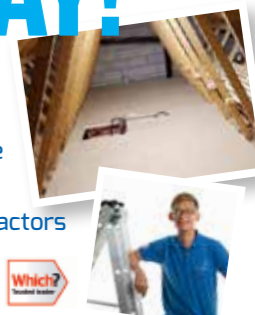


CREATING SPACE THE EASY WAY!



HUGE BENEFITS

- De-clutter your home
- Create up to a third more space
- Gain safe & easy loft access
- No mess, no fuss, no sub contractors
- DBS checked & fully insured
- Which? Trusted Trader



Call Kelvin now to book a FREE survey & quote

01908 871 526

WWW.ACCESS4LOFTS.CO.UK

WATERMEAD OPEN GARDENS

Once again we will be supporting Florence Nightingale Hospice Charity's annual floral fundraiser. Several Watermead residents will be opening their gardens to the public on the afternoon of 9th July.

Maps showing the location of the properties to be visited will be sold at WM News and the Watermead Inn at £6 for individuals or £10 for a family.

If you're really passionate and proud of your garden and would like to share it with your local community, then why not take part in this event. Whatever the size, location or theme of your garden, if you're interested in opening yours to the public and help raise much needed funds for this worthwhile charity, then please get in touch with our Parish Clerk at Noreen.shardlow@watermead-pc.gov.uk and she will add you to the map.

So please put this date in your diary and support this event. It's a great way to walk off that Sunday lunch or build up your appetite if you are eating later in the day!



Ride the Night

On the last Saturday in April a group of cyclists from Aylesbury (including Michelle Jackson and Moyna Merrison from Watermead) took part in Women v Cancer - Ride the Night - a 100k bike ride from Kempton Park to central London and back (during the night) raising money for three very worthwhile charities - Breast Cancer Now, Jo's Cervical Cancer Trust and Ovarian Cancer Action. As a group we have cycled together regularly often as part of Breeze - a branch of British cycling offering fun, free bike rides for women of all abilities.

We have been cycling together for several years, but more so since the COVID lockdowns when getting out cycling kept many of us going through difficult times. Eventually our training took us further and faster than the Breeze rides and we cycled across Buckinghamshire, and beyond into neighbouring counties too. We are lucky to be surrounded by beautiful countryside for cycling, with some lovely leafy lanes, but it's fair to

say the Chilterns are also quite hilly, and the roads can be a little challenging with potholes everywhere. Thankfully, Ride the Night was in London and mostly very flat.

On the night itself, we met at Kempton Park racecourse where we all got kitted out in pink high viz vests, decorated our bikes and ourselves with lights and anything reflective we could get our hands on and waited for the start. We set off in waves, allowing a small group of cyclists out at a time to avoid bunching together. The first few miles were full of potholes, but no worse that we have around here! We cycled into London, passing some iconic landmarks such as Tower Bridge, the London Eye (which was lit up in pink for the occasion) and Westminster Abbey. The route was really well signposted, with friendly marshals along the way. We were cheered on by Londoners who came out of their houses, stood on street corners, hung out of windows or clapped as they walked by us. We were well fed and watered at the three feed stations

with more cake that you could ask for, a welcome hot drink and the challenge of a portaloos in the dark (glad I had fairy lights on my helmet for that one!) When it got cold and damp and we were still far from home, it was the support and generosity of all our sponsors that kept us going to the end. So far, as a group, we have raised over £6,500 with another £1000 pledged.

When I was first asked to do it by Fran (Breeze leader) I said absolutely not - 100k is too far. Gradually as a group we all talked each other round and agreed to do it together. We really enjoyed the training, which did usually involve a cake stop along the way! The event was great fun, the atmosphere was amazing, the sponsorship and fundraising was overwhelming. Somehow we seem to have signed up to do it again next year. www.join.dream-challenges.com/fundraisers/BreezeBellesAylesbury

Clare Thompson



Forever Forget-Me-Not Display at Waddesdon Manor

Florence Nightingale Hospice Charity (FNHC) partnered with Waddesdon Manor to display a very special Forever Flowers event to celebrate and remember loved ones for two weeks in April/May. A stunning temporary display of 1,000 metal Forget-Me-Not flowers were installed in the Aviary Gardens, each flower representing the life, love and memories of a loved one.

Once the installation was removed, those who had dedicated a flower were able to take it home to display as a forever keepsake. Those who participated are helping the charity to provide excellent local hospice care and be there for more patients and families across Buckinghamshire and its borders.



Sally's Blog



Hello everyone. I hope you are all well and looking forward to summer. I'm sure it's going to get better soon and we can enjoy all the fun summer will bring.

I loved the celebrations for the Coronation and went to Oving's party and even went into the dog show. Unbelievably, I didn't catch the judge's eye, but I thought I was pretty much the best in show!

The really exciting thing is that we are going to have our own Watermead Dog show again at Larks by the Lake on 28th May!!! I can't wait! I know I'm not the 'fastest Bonio eater in the world' which is one of the classes, but I don't mind trying. I'd love a rosette. Ronnie and I are currently wearing Union Flag bow tie and bandana - we are very patriotic.

I am fed up with the weather though. Every single day for weeks and weeks it's rained either just before we go for a walk, or during it. Beforehand is worse - I have to wear a ridiculous coat.

The other thing I'm a bit cross about is the new Chinese carpet - its arrival has meant a lot of towels I have to walk over and also have my paws wiped on them when I come in from the garden. I can't understand it but I do look rather cute in my towel, I hope you will agree.

I'm looking forward to Ronnie's birthday party in a few weeks. It's time us dogs had a bit of a get-together. I was eight this year, can't quite believe it, but I am maintaining my usual bright and happy lifestyle!

Have a good summer and I'll see you soon....

Love Sally



THE FIVE ELMS PUB
WEEDON

— — — — —
FORK AND SPOON
— — — — —

SET LUNCH
AVAILABLE THURS-SAT
TWO COURSES £19, THREE COURSES £25

A LA CARTE MENU
AVAILABLE THURS-SAT EVENING

SUNDAY LUNCH
TRADITIONAL ROAST SERVED EVERY SUNDAY

— — — — —
£10 OFF
— — — — —

WHEN YOU SPEND £60 OR MORE ON FOOD AND DRINK
(EXCLUDES WEDNESDAYS & THEMED EVENINGS)

WWW.FIVEELMSWEEDON.COM @FIVEELMSWEEDON @FIVEELMS.WEEDON
01296 256057 | 4 STOCKAWAY, WEEDON, AYLESBURY HP22 4NL

Three Kings called Charles

From Monarchy to Commonwealth in the reign of King Charles I, then Republic under Oliver Cromwell, to Monarchy again in 1660 under Charles II to the Constitutional Monarchy we enjoy today. Many may think that monarchy is outmoded but we have a Head of State who, no matter what his or her political views are, cannot interfere in politics. Neither can he or she summon or dismiss Parliament on a whim, as could happen in the 17th century.

KING CHARLES I

Our first King Charles was born in Dunfermline, Scotland in 1600. He was the second son of James VI of Scotland, James I of England, and Anne of Denmark. James was the first king of the House of Stuart.

Charles's elder brother, Henry, a very popular Prince, died aged 18, probably of typhoid. Prince Charles, an undersized 12-year-old, was left to attend his brother's funeral alone as his parents were

too devastated to attend.

Charles was, in some ways, the opposite of his brother. Henry had been tall and athletic; Charles was, even as an adult, very small at just under 5 feet tall. Also, Charles had a pronounced stammer. However, what he lacked in physical presence he made up for by his dignity. He is said to have been courteous and disgusted by the lasciviousness of his father's court. No evidence has been found that Charles was ever unfaithful to his

wife, Henrietta Maria, while they were together, with either women or men. James, his father, is said to have had male as well as female lovers. The Duke of Buckingham was one.

It was with the Duke of Buckingham that Prince Charles set out for Spain to try to court the Infanta. This was a ridiculous enterprise. Firstly, whoever you were, you did not just turn up at the Spanish court and, secondly, the Spanish were Catholics. Charles and the Duke were lucky to be allowed to leave. Spain, a great power at the time, could well have held them hostage. One thing the visit did do was to reinforce Charles love of art. The Spanish monarch had a vast art collection. Both Charles's mother and brother Henry had collected art and Charles wanted to rival the Spanish with his own collection.

The Spanish Monarchy would only allow Charles to marry the Infanta if he became a Catholic which he could not do as English Monarchs are Supreme Governors of the Church of England. However, Charles did marry a Catholic - Henrietta Maria, daughter of Henry of Navarre. Most people in England were afraid of Catholicism as they remembered the burnings of Protestants in the reign of Mary Tudor and the Gunpowder Plot of 1605. Henrietta Maria was allowed to bring her own priests and French entourage to England which did not endear her to the English and still less to the Scots.

Politically, Charles I was not a man for compromise and was extremely extravagant. He had many arguments with Parliament who often refused to grant him funds. Charles then resorted to

forcing loans from individuals as well as other unpopular money-raising tactics.

Finally, in 1642, after being forced out of London, Charles raised his standard at Nottingham and the Civil War began which lasted in all parts of the Kingdom until 1651. In January 1649 Charles went on trial for making war on his people and was executed. The country first became a Commonwealth, then in 1653 a Republic under Oliver Cromwell.

KING CHARLES II

The man who would become Charles II was born on 29th May 1630. He was one of nine children of Charles I and Henrietta Maria. Two of his siblings died in infancy. Despite being brought up in different establishments from his siblings, he seems to have enjoyed time with them and his devotion to his sisters can be seen in letters he later wrote to them after he was married.

The Parliament of Scotland proclaimed Charles II king on 5th February 1649. But England entered the period known as the English Interregnum or the English Commonwealth, when England was governed as a republic led by Oliver Cromwell. Cromwell defeated Charles II at the Battle of Worcester on 3 September 1651, and Charles fled to mainland Europe. Cromwell became Lord Protector of England, Scotland and Ireland. Charles spent the next nine years in exile in France, the Dutch Republic and the Spanish Netherlands. The political crisis that followed Cromwell's death in 1658 resulted in the restoration of the monarchy, and Charles was invited to return to Britain. On 29th May 1660, his 30th birthday, he was received in London to public acclaim. After 1660, all legal documents stating a regnal year did so as if he had succeeded his father as king in 1649. After the death of Cromwell and the failure of his son Richard to run the country, the second Charles Stuart was in the Netherlands when he got the summons to return to Britain as King in 1660.

He married Catherine of Braganza but had no legitimate offspring, though he is said to have sired twenty children with his many mistresses. All of whom were acknowledged and given titles. Perhaps the most famous of these is James Scott, Duke of Monmouth who tried, unsuccessfully, to take the throne when his father died.

In 1665 the Great Plague broke out in London. It killed many thousands of people in the capital and elsewhere in the country. Cries of "Bring out your dead" could be heard as the dead were collected and buried in pits. There was much argument as to what caused the bubonic plague at that time. The plague was endemic in 17th century cities and the rich left for their estates during outbreaks. However, the bubonic plague of 1665 and 66 was exceptionally virulent. Many people who had seen a comet in the sky in 1664 said it was the wrath of God.

On 2nd September 1666 the Great Fire of London broke out. Both the King and his brother James took part in pulling down houses



to try to halt the fire. The fire was said to have started in a bakery in Pudding lane, the premises of Thomas Farriner. Others blamed foreigners in the capital, especially Catholics. The fire destroyed 13,200 houses and 87 churches even old St Paul's Cathedral. After the fire, Charles ordered the houses to be rebuilt of stone and brick and, of course, St. Paul's was rebuilt by architect, Sir Christopher Wren.

On his death bed Charles is said to have converted to Catholicism. If true, he had been clever enough to keep his beliefs secret whilst king. His brother James, who took the throne when Charles died in 1685, was not so clever. His insistence on being a Catholic led to his being deposed by his daughter Mary and her husband William, both staunch Protestants.

Val Edwards

KING CHARLES III

King Charles III was born Charles Philip Arthur George on November 14, 1948, in London. The son of Queen Elizabeth II and Prince Philip, Charles ascended the royal hierarchy at an early age. His mother became queen when he was only three after the death of his grandfather King George VI in 1952. As Elizabeth's oldest child, Charles became the heir apparent to the British throne and received the title of Duke of Cornwall. Charles was also destined to become Great Britain's oldest heir apparent, with his mother remaining queen for seven decades. His younger siblings are Princess Anne, Prince Andrew and Prince Edward.

In 1956, Charles went to the Hill House School in London before heading off to boarding school at the Cheam School the following year. In addition to his education, he had increased responsibilities as he was made the Prince of Wales and Earl of Chester at the age of nine. In 1962 Charles changed schools again to go to Gordonstoun in Scotland. He did not enjoy these early school years. Later in the decade he also studied in Melbourne, Australia as an exchange student. In February 1966 Charles went to Timberlake School in Australia. There he made headlines when he and some other boys tried to order Cherry Brandy in a pub!

Charles studied archaeology, anthropology and history at Trinity College, part of the University of Cambridge, from 1967 to 1970. In addition to his studies, he was active in campus life, involving himself in several activities such as polo. After receiving his degree in 1970, the first royal heir apparent to do so, Charles embarked on a career in the military.

While he was at Cambridge Charles met Lucia Santa Cruz and they were often seen together. They could never have married as she was a Catholic. In summer 1972 he was introduced to Camilla Shand by Santa Cruz. In December of that year Charles, then a naval officer, was sent on a Caribbean posting. In 1973 Camilla wrote to him saying she was going to marry Andrew Parker Bowles. Under public scrutiny his entire life, he married Diana Spencer in the summer of 1981 to huge media fanfare, though the couple would eventually divorce in 1996 after years of gossip and scandal. He is the father of Princes William and Harry and is also a grandfather.

Many children look up to athletic stars or fictional heroes as role models, but for the Prince Charles, there was no need. His hero was Louis Mountbatten, 1st Earl Mountbatten of Burma, his father's uncle, the last viceroy of India and first sea lord of the British Navy. "Uncle Dickie" provided indispensable wisdom in matters of state and romance to the impressionable young heir to the British throne. Charles was devastated by Lord Mountbatten's assassination by the IRA in the summer of 1979. Charles eventually recovered from the great loss, in part by following through on the tasks his great-uncle left on his plate. One such responsibility was the stewardship of the United World Colleges, its presidency having passed from Mountbatten to Charles in 1978, and the prince fulfilled one of his predecessor's wishes by launching a branch in the United

States in 1982.

He shared interests with his father, who set up the Duke of Edinburgh Award Scheme. Prince Charles set up the Prince's Trust. Together they raised £100,000,000 annually to support charitable work both here and abroad.

After six months of aviation training with the Royal Air Force, Charles joined the Royal Navy in 1971, going on to serve on the HMS Norfolk and receiving a promotion in 1973 to acting lieutenant.

During the mid-1970s, Charles joined the Royal Naval Air Station to receive helicopter training, and later served as a helicopter pilot for the 845 Naval Air Squadron, based on the HMS Hermes. His time with the Hermes included a tour of the Caribbean and Canadian waters before he took up additional course work at the Royal Naval College in Greenwich. In 1976, Charles ended his military service as commander of the HMS Bronington, the same year that he established the Prince's Trust, a charitable organisation dedicated to helping improve the lives of disadvantaged youth.

Towards the close of the decade, Charles further expanded his military skill set with parachute training, having already taken the reins at times as the pilot for the Queen's Flight, the monarchy's official aircraft. He was eventually promoted to Group Captain for the Royal Air Force in 1995, and in the new millennium was again promoted to the rank of Air Chief Marshal.

After years of quietly maintaining their relationship, Charles married Camilla Parker Bowles on April 9, 2005. She then became the Duchess of Cornwall and now often accompanies her husband on many of his official visits. Besides his royal duties, Charles has become a leading philanthropist. In addition to his trust, he has backed a huge array of charitable organisations, supporting efforts to improve educational services, fund arts initiatives, support sustainable business endeavours, provide employment opportunities to older citizens and help the environment.

In 2007, Charles launched the Prince's Rainforest Project, a global initiative with corporate and celebrity backing to curtail tropical deforestation and thus aid the quest to staunch climate change. And in a nod to religious diversity and the multicultural nature of modern England, Charles has also promised to have a multi-faith coronation.

In addition to his philanthropic work, Charles is also an avid watercolourist and has published several books, including the 1980 children's story *The Old Man of Lochnagar*, 2010's *Harmony: A New Way of Looking at Our World*, and 2012's *The Prince's Speech: On the Future of Food*.

In spring 2019, Charles announced that he had opened a new bed and breakfast in Caithness, Scotland, called *The Granary Lodge*. The B&B is located on the grounds of *The Castle of Mey*, the former retreat of Charles' grandmother, Queen Elizabeth.

In many respects the King has not had an easy life, but with the woman he loves as his Queen by his side, he and the nation are beginning a new chapter.

Mary Singleton



Local charity seeks volunteers for busy summer holidays

Florence Nightingale Hospice Charity are seeking short-term temporary volunteers to help in their shops across Buckinghamshire over the busy summer holiday period. "With summer fast approaching, we are on the lookout for short-term 'Summer Temp' volunteers to help us run our shops during the busy summer period and to help cover when our existing volunteers go away themselves." says Charmain Behan, Volunteer Manager at the charity. "It's a great opportunity for those that might be back from university, in-between jobs or retired to learn new skills and to give volunteering a try, whilst helping their local community. So, if you can spare a few hours a week between June and September, please get in touch to find out more."

The Charity has shops based in Aylesbury, Beaconsfield, Buckingham, Chinnor, Haddenham, Hazlemere, Marlow, Thame, Wendover, and Winslow as well as an online retail team based at their Furniture Showroom in Aylesbury.

"We've also got roles for those who want to volunteer on a more ad hoc basis. This could involve helping to run a stall at a local fair, marshalling at our Walk of Light or even becoming Florrie Bear for an hour or two!"

To find out more, visit the charity's website at www.fnhospice.org.uk/volunteer or drop into your local shop to speak to the Shop Manager.



It's been a busy couple of months at Footsteps Watermead as we have been enjoying the change of seasons, weather and a packed calendar of national celebrations! In March we had great fun taking part in World Book Day. The children (and staff) all dressed up as favourite book characters. There were some fantastic and creative costumes on display. But here at Footsteps our love of books expands way beyond a day. We have explored a variety of stories to encourage language development - 'We're Going on a Bear Hunt', 'The Gruffalo', 'Goldilocks and The Three Bears', 'Dear Zoo' and 'A Squash and a Squeeze' with various activities to complement each book. We were proud to take part in the Sponsored Listen in conjunction with Usbourne Books. Our children were sponsored to listen to stories at home. A huge thanks to our incredible families for their support. We were thrilled to raise £192.50 which we are using to purchase new books for setting with.

We enjoyed a range of activities and crafts to acknowledge our amazing mums and carers. We topped this off with our Mother's Day stay and play. It was brilliant to welcome our mums in to play and have cake with their children. They planted sunflower seeds, shared stories and even participated in a music and movement session!

We also enjoyed learning more about celebrations of faith. We learnt all about Eid and the children loved trying new foods at snack time.

Food is a common theme here at Footsteps and we have

started our allotment for 2023! We have been planting potatoes, tomatoes, peppers and lots more. The children were fantastic at helping to build our new greenhouse too. They are now armed with lots of knowledge about what plants need to help them grow.

Outside the fun continued as we took part in World Daily Mile Day with an outside obstacle course. There was running, jumping, balancing and lots of teamwork on show!

There have been investigations galore as we explore the world around us. One of our favourite things to look at in the last few weeks has been mini-beasts - especially bug hunting! This has been supported by reading stories and nature books to help with language development. A popular one has, of course, been The Very Hungry Caterpillar. This is a perfect book to help us talk about life cycles as well as healthy food choices.

We are all very excited as we now have our very own five caterpillars we are watching change into butterflies!

The crowning glory this month has been our Coronation activities. We have been making and posting our cards in the letterbox as well as learning all about the Royal family. We will be rounding off celebrating the Coronation with a picnic fit for a King, where children's families can join us for lunch.

We have just a few spaces available for September. To enquire please contact Karen: Telephone number: 07865 945297, Email: watermead@footsteps-nursery.co.uk



iGroup services

WOODEN FLOOR SANDING & REFINISHING

CARPET & UPHOLSTERY CLEANING

HARD FLOOR CLEANING, POLISHING & SEALING

OVEN CLEANING

01296 399450

contact@igroupservices.co.uk
www.igroupservices.co.uk

Please don't bin me I'm worth more than that!...

TOTAL RECOOL AIR CONDITIONING

ARE YOU SUMMER READY??

Take advantage of installing air conditioning before summer!!!!

0% VAT ON ALL DOMESTIC INSTALLS

INSTALL-SERVICE-REPAIR

• 0% VAT on installs

• upto 7 Years Watranty

• Yearly Service Packages

• F-Gas Certified

admin@totalrecool.co.uk

07908786387

Total Recool Ltd, Burcott lodge Farm, Bierton, Aylesbury. HP22 5AS

FUN DOG SHOW AT LARKS BY THE LAKE SUNDAY 28TH MAY 2023

CLASSES START AT 1.30PM SHARP

- 1.30PM Best puppy under 12 months old
- 1.45PM Best rescue dog
- 2.00PM Best junior dog handler:
Demonstrate walk to heel, sit, lie down!
- 2.15PM Fancy dress Dog & Owner
(Coronation themed)
- 2.30PM The fastest Bonio eater
- 2.45PM The best pedigree dog

ROSETTES TO THIRD PLACE

Join in the fun

Entries on the field from 1.00pm
1st class 1.30pm sharp

The judges' decision is final

Enter on the field on the
day £1 per class



Watermead Pub Lunch Club

Our lunch club continues to thrive at the Watermead Inn. The new manager, Adi, provides us with a varied menu with a choice of three main courses including one vegetarian, and a choice of delicious desserts, or you can have a tea or coffee. The cost of this lunch is £12. The Club is aimed at anyone within our community who would like to enjoy meeting new and old friends for a bite to eat and a natter; we especially welcome anyone who may have been missing out on regular social contact. We now have a group of over 60 members and everyone enjoys the food and the company.

If you would like to join us the Pub Lunch is held on the third Wednesday of the month at 12:30pm in the restaurant of the Watermead Inn. If you know someone who might benefit from getting out and about a bit more, then please do get in touch. All you have to do is book at least a week in advance by calling Mary Singleton on 07986 582903 or text her on that number (providing your email address if you have one) and she will provide you with all the information you need.

This is a Community Impact Bucks initiative and bookings can only be made through the local organiser whose contact details are given above.



Suppliers and installers of the highest quality

Windows, Doors & Conservatories

Visit our Showroom or contact us for a free no obligation quote:
19 Bridgegate Business Park,
Gatehouse Way, Aylesbury HP19 8XN

Tel: 01296 422842
enquiries@premwindowsanddoors.co.uk
www.premwindowsanddoors.co.uk



LARKS BY THE LAKE

A BIG THANK YOU TO ALL OF OUR SPONSORS...



Grant & Stone



SUNDAY 28TH MAY 2023 / WATERMEAD BALLOON FIELD, 12.30-5PM

FREE ENTRY

Displays, The Great Watermead Bake Off, Food Court, Shopping, Games, Fairground Rides, Fun Dog Show, Music, RAF Hawker Hurricane Fly Past*, Licensed Bar.

* Fly past subject to weather conditions.

LARKS BY THE LAKE

SUNDAY 28TH MAY 2023 / WATERMEAD

Displays, Food Court, Shopping, Games,
The Great Watermead Bake Off,
Fairground Rides, Fun Dog Show, Music,
RAF Hawker Hurricane Fly Past*, Licensed Bar.



FOR MORE DETAILS:

SEARCH: WATERMEAD EVENTS

WATERMEAD BALLOON FIELD, 12.30-5PM

*Fly past subject to weather conditions.

FREE ENTRY

Let's lark about by the lake!